
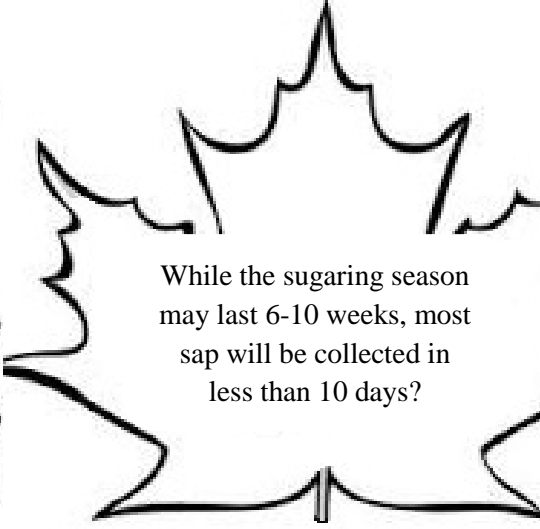


IT'S MAPLE SYRUP TIME!


DID YOU KNOW?



A maple tree must be 40 years old before it can be tapped for sap?



While the sugaring season may last 6-10 weeks, most sap will be collected in less than 10 days?



Removing sap won't harm trees as long as they are healthy and the holes are limited.

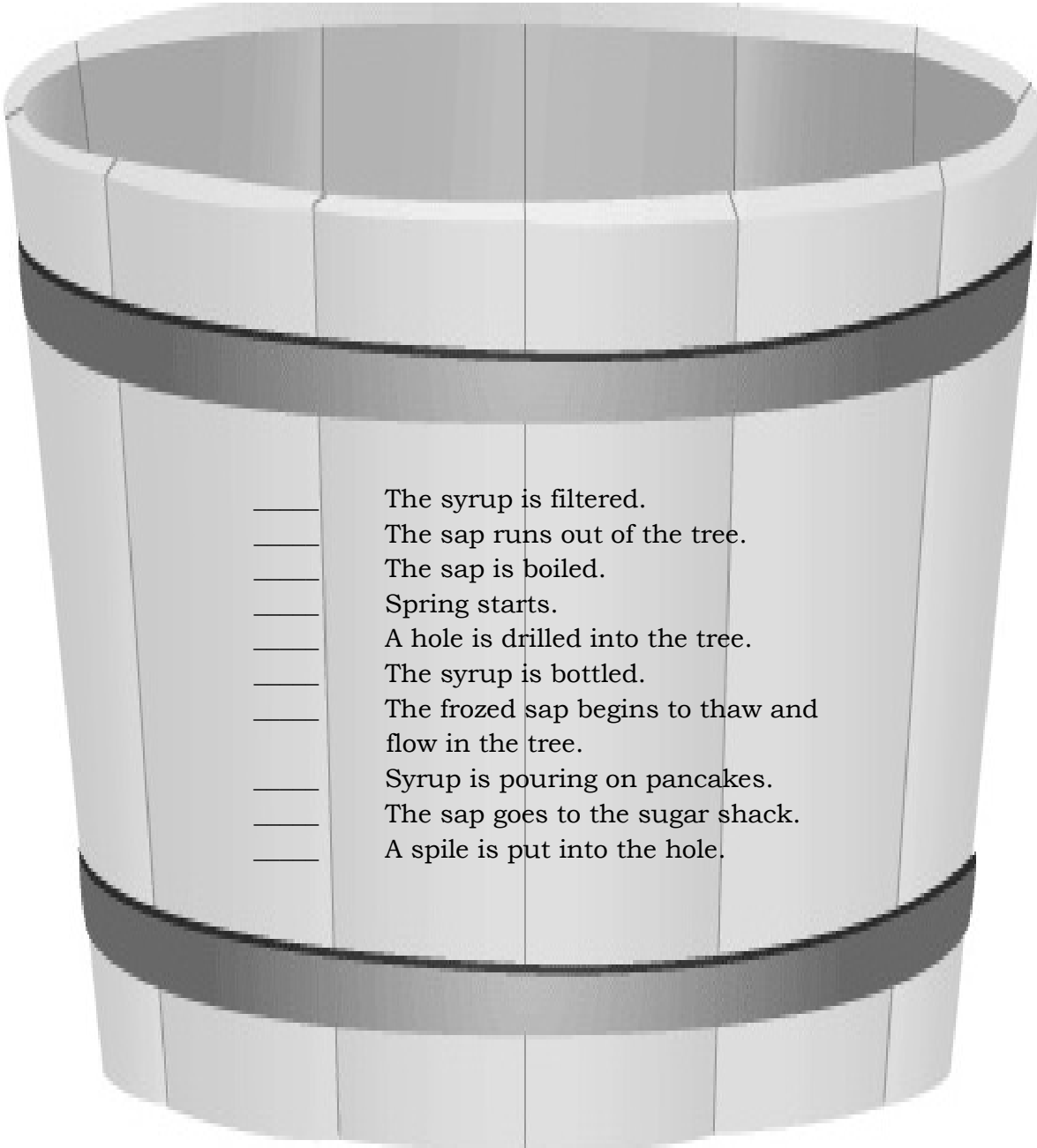
What two questions do you have since visiting the EFSC sugar bush?

1. _____

2. _____

MAPLE SYRUP CHALLENGE!

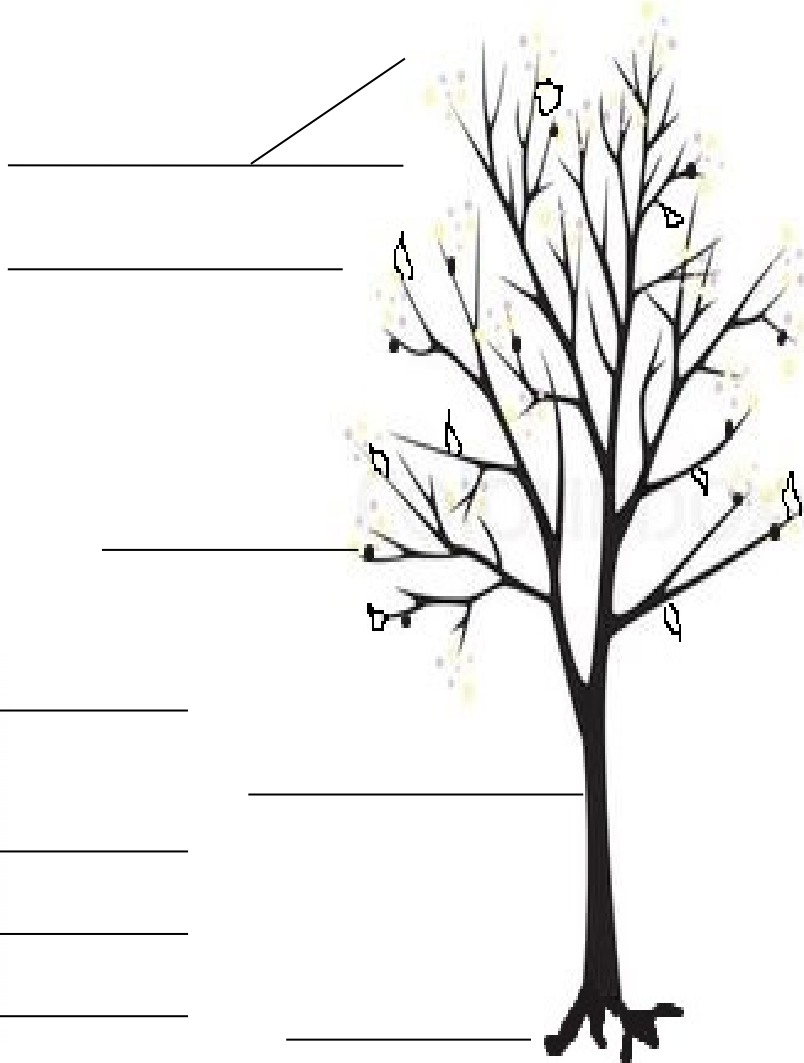
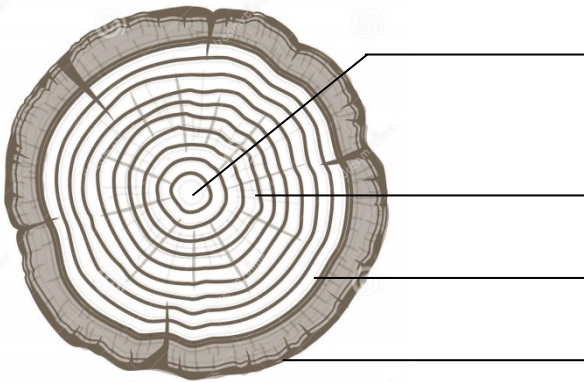
Put the following events of making maple syrup in the correct order from start to finish.

- 
- _____ The syrup is filtered.
 - _____ The sap runs out of the tree.
 - _____ The sap is boiled.
 - _____ Spring starts.
 - _____ A hole is drilled into the tree.
 - _____ The syrup is bottled.
 - _____ The frozed sap begins to thaw and flow in the tree.
 - _____ Syrup is pouring on pancakes.
 - _____ The sap goes to the sugar shack.
 - _____ A spile is put into the hole.

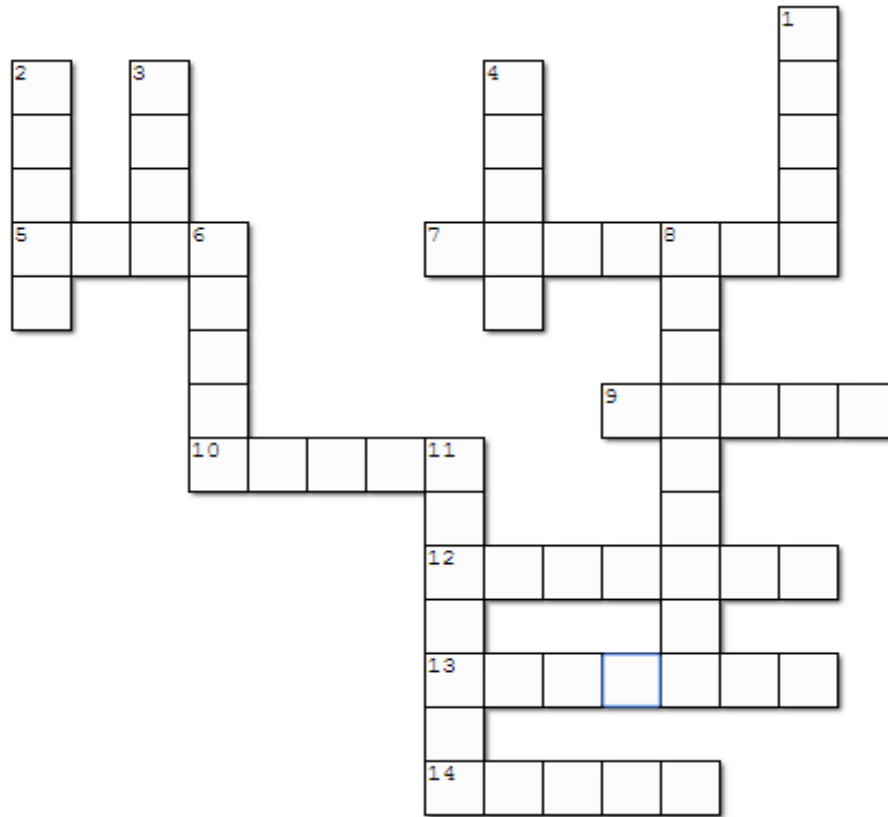
THE SUGAR MAPLE

*Deep in the heart of the maple tree
Slowly the sap is stirring
Up from the roots that reach far in the mud,
Up through the branches, out to the bud.
"Oh", says the tree,
"I can hear the robin sing.
I'll have to wake up, for it must be spring!"*

Trunk
Roots
Branches
Buds
Leaves
Heartwood
Sapwood
Outer bark
Inner bark



MAPLE SYRUP CROSSWORD!



ACROSS

5. We put ____ on sap buckets to keep out leaves and animals
7. We collect sap in plastic or metal ____
9. The spout that is put in a tree
10. During the winter, sap is stored in the ____ of the tree
12. ____ tubing is used to collect sap in modern sugar shacks
13. Very important syrup producing province
14. We use a ____ to make a hole in the maple tree

DOWN

1. Steam escapes through the ____ in the sugar shack
2. To get sap we tap sugar ____ trees
3. Good syrup weather is warm days and ____ nights
4. We put maple ____ on pancakes
6. Maple syrup has ____ and water in it
8. We boil sap in the ____ in the sugar shack
11. The layer of wood under the inner bark

Vents
 Sugar
 Syrup
 Spile
 Drill
 Maple
 Ontario
 Evaporator
 Lids
 Sapwood
 Buckets
 Roots
 Cold
 Plastic