

BESSBOROUGH BUZZ

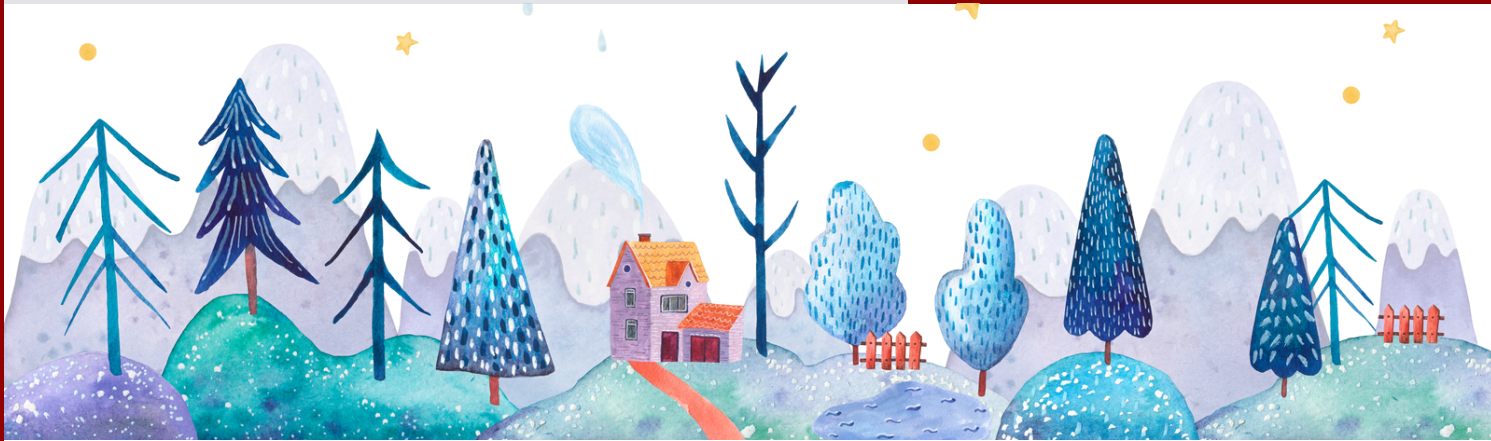
YOUR BESSBOROUGH E&MS NEWSLETTER

211 Bessborough Drive Toronto, ON M4G 3K2

SAFE ARRIVAL bessborough@tdsb.on.ca | 416. 396.2319 LN5

NOVEMBER 22, 2024

Superintendent: Nadira Persaud
Ward 11 Trustee: Rachel Chernos Lin
Principal: Janet Bambrick
Vice Principal: Katalin Roughton-Paré
Office Administrator: Renee Cronier
Secretary: Vasiliki Gioris



MARK YOUR CALENDARS

PIZZA LUNCH

NOVEMBER 27

NORTHERN INFORMATION EVENING

NOVEMBER 27, 6 PM

LEASIDE INFORMATION EVENING

NOVEMBER 28, 6PM

HOLIDAY CONCERTS - SAVE THE DATE:

DECEMBER 12, 6:30 PM

DECEMBER 13, 10.30 AM

KINDERGARTEN COFFEE & CONCERT

DECEMBER 13, 9:30 AM



HOLIDAY CONCERT DETAILS

Grade 1-6 students along with the choirs (primary, junior, and senior) and band will perform on December 12th, beginning at 6:30 pm, in the gym. As we have a capacity limit in the gym, families will be limited to two seats for the evening concert.

We will also be repeating the concert on Friday, December 13th beginning at 10:30 am. **We are asking families who are able, to attend the daytime concert.**

A Kindergarten coffee and concert will be held on Friday, December 13th. We will start with a coffee social in the gym at 9am, followed by the Kindergarteners performing a selection of songs beginning at 9:30 am.

We all look forward to seeing families at these joyful events!

IMPORTANT DATES

SCHOOL COUNCIL MEETINGS

- DECEMBER 4 - 7PM

UPCOMING PA DAYS

- NOVEMBER 29

WINTER BREAK

- DECEMBER 23 - JANUARY 3



Library News

November 15, 2024



Dinovember

In an effort to beat the November blahs and spark more joy in reading the library is launching “Dinovember”. During the next few weeks Dinosaur books will be on display. Please encourage your students to take out ANY of these books. We are somewhat lacking in intermediate level books (sorry!) but have plenty for K-6.

A reminder that “Book Peepers” (coloured bookmarks that stick out of the books) cannot be taken by students and should be placed in the blue bin on checkout desk.

There are black and white dinosaur bookmarks (that are meant for students who take out a dinosaur book but obviously can be given to anyone) and also a “Name that Dinosaur” and a dinosaur drawing contest that all students can participate in. I also have a few dinosaur puzzles that students can work on during open doors.

I am hoping that Dinovember will highlight some of our non-fiction and fiction books and maybe even launch some creative or report writing ideas for the classroom.

Please let me know if you have any suggestions for this or any other initiative. I am always open to ideas!



SEC Bessborough Cafe

By Anu Dashtseren, 8B

In Canada, around 40,000 people, ages 13 to 24, experience homelessness every year. They are most likely full-time students, balancing school work, social life, and trying to find a space to stay for the night. Not only do they undergo lots of stress, they are prone to human trafficking, modern-day slavery. Youth undergoing homelessness and human trafficking is a topic that is often overlooked. That is why Covenant House exists. Covenant House is an agency that provides the basic necessities for the youth such as food, clothing and shelter. Additionally, they provide services such as counseling and well-being programs to start up a healthy healing process.

The Student Engagement Committee (SEC) is trying to raise awareness about youth experiencing homelessness and human trafficking by supporting Covenant House Toronto. Bessborough Cafe is a fundraising sale through which we will offer a variety of festive winter treats for students to purchase during their lunches. Ranging from hot chocolate to handmade crafts to even candy grams for friends. Students will be able to buy these items on these specific dates: **December 4th***, **December 6th**, and **December 9th**.
(* This date is reserved to Grades K- 2.)

Our goal as a school is to raise \$1,000 to go towards these causes. Any amount will be greatly appreciated. Thank you.

We also have a campaign fundraising page for anyone interested in donating online to support our campaign. Tax receipts will be issued for anyone who donated \$20 or more. Click the link below or scan the QR code to learn more:

<https://covenanthousetorontoevents.ca/ui/creatingthepossible2425/p/bessborough>



For online donations, scan the QR Code

2024 Winter Holidays Fundraiser
Bessborough Cafe
DECEMBER 4*-6 & 9 (RM. 31)
ORGANIZED BY THE STUDENT ENGAGEMENT COMMITTEE IN SUPPORT OF COVENANT HOUSE TORONTO

We will sell hot chocolate, candy grams, cookies, and many more
*Day reserved only for Gr K- 2 students

The poster features a black background with gold stars at the top. It includes a QR code in the top right corner, a photo of colorful candy grams on the left, and photos of donuts and a hot chocolate drink on the right. The text is written in a mix of gold and white fonts, with the event title in a large, cursive script.



TDSB Social Workers

present the



VIRTUAL

DEVELOPMENTAL
DISABILITIES
CONNECT

Developmental Disabilities Virtual Connect

Formerly Virtual Community Fairs

Supporting Parents/Caregivers of
Children, Youth and Young Adults
with Developmental Disabilities and
Complex Needs.



Save The Dates



**November
2024**

Morning

Nov 18th from 9:30 am - 12 pm

Evening

Nov 25th from 5:30 pm - 8 pm

**December
2024**

Morning

Dec 9th from 9:30 am - 12 pm

Evening

Dec 16th from 5:30 pm - 8 pm

**January
2025**

Morning

Jan 20th from 9:30 am - 12 pm

Evening

Jan 27th from 5:30 pm - 8 pm

**February
2025**

Morning

Feb 10th from 9:30 am - 12 pm

Evening

Feb 24th from 5:30 pm - 8 pm

**March
2025**

Morning

Mar 24th from 9:30 am - 12 pm

Evening

Mar 31st from 5:30 pm - 8 pm

**April
2025**

Morning

Apr 14th from 9:30 am - 12 pm

Evening

Apr 28th from 5:30 pm - 8 pm

**May
2025**

In-Person Event

May 3, 2024

10 am - 2 pm

At A TDSB School TBA

Please reach out to your child's school administrator to get more information about how to attend the Developmental Disabilities Virtual Connect Meetings or email us at virtualfairinfo@tdsb.on.ca

Drop In Sessions 2024-2025 for Parents/Guardians/Caregivers

Special Education and Inclusion is pleased to once again offer a number of drop-in sessions for parents, guardians, and caregivers. We look forward to connecting with you!

Session	Date	Time	Link
Occupational Therapy/Physiotherapy Services Question and Answer Session	October 15th, 2024	12:30pm - 1:30pm	Link
Supporting the Grade 8 to 9 Transition for Students with Disabilities/Special Education Needs	November 4th, 2024	12:30pm - 1:30pm	Link
Occupational Therapy/Physiotherapy Services Question and Answer Session	November 19th, 2024	12:30pm - 1:30pm	Link
Supporting the Grade 8 to 9 Transition for Students with Disabilities/Special Education Needs	December 3rd, 2025	6:30pm - 7:30pm	Link
Occupational Therapy/Physiotherapy Services Question and Answer Session	December 17th, 2024	12:30pm - 1:30pm	Link
Occupational Therapy/Physiotherapy Services Question and Answer Session	December 19th, 2024	6:30pm - 7:30pm	Link
Occupational Therapy/Physiotherapy Services Question and Answer Session	January 21st, 2025	12:30pm - 1:30pm	Link
Accessing Special Education Supports	January 22nd, 2025	12:00pm - 1:00pm 6:30pm - 7:30pm	Link Link
Occupational Therapy/Physiotherapy Services Question and Answer Session	February 18th, 2025	12:30pm - 1:30pm	Link
Occupational Therapy/Physiotherapy Services Question and Answer Session	March 18th, 2025	12:30pm - 1:30pm	Link
Occupational Therapy/Physiotherapy Services Question and Answer Session	March 20th, 2025	6:30pm - 7:30pm	Link
Accessing Special Education Supports	March 26th, 2025	12:00pm - 1:00pm 6:30pm - 7:30pm	Link Link
Occupational Therapy/Physiotherapy Services Question and Answer Session	April 15th, 2025	12:30pm - 1:30pm	Link
Accessing Special Education Supports	May 7th, 2025	12:00pm - 1:00pm 6:30pm - 7:30pm	Link Link
Occupational Therapy/Physiotherapy Services Question and Answer Session	May 20th, 2025	12:30pm - 1:30pm	Link
Occupational Therapy/Physiotherapy Services Question and Answer Session	May 22nd, 2025	6:30pm - 7:30pm	Link