



ID	Task Mode	Task Name	Notes	Start	Finish	Duration	Gantt Chart (1 Feb to 8 Aug)																											
1	✓	MOBILIZATION		Mon 3/25/19	Fri 3/29/19	5 days	[Gantt bar]																											
2	✓	HOARDING / TREE PROTECTION		Mon 3/25/19	Fri 3/29/19	5 days	[Gantt bar]																											
3	✓	SITE DEMO / CLEARING		Mon 4/1/19	Fri 4/19/19	15 days	[Gantt bar]																											
4	✓	TEMPORARY ACCESS FOR 68 DAVISVILLE AVENUE		Mon 4/1/19	Fri 4/5/19	5 days	[Gantt bar]																											
5	✓	MUD MATT INSTALLATION		Mon 4/8/19	Tue 4/9/19	2 days	[Gantt bar]																											
6																																		
7	✓	<b>BELOW GRADE CONSTRUCTION</b>		Thu 4/11/19	Wed 5/27/20	295 days	[Summary bar]																											
8	✓	<b>BASEMENT PARKING STRUCTURE GRIDLINE 1 - 12</b>		Thu 4/11/19	Wed 5/27/20	295 days	[Summary bar]																											
9	✓	EXCAVATION		Thu 4/11/19	Wed 4/24/19	10 days	[Gantt bar]																											
10	✓	SHORING		Mon 5/6/19	Thu 5/23/19	14 days	[Gantt bar]																											
11	✓	DETAILED EXCAVATION - FOOTINGS / PIER FOOTING		Mon 5/20/19	Fri 7/19/19	45 days	[Gantt bar]																											
12	✓	WATERPROOFING		Mon 7/1/19	Fri 8/16/19	35 days	[Gantt bar]																											
13	✓	FOUNDATION FORMING		Mon 6/3/19	Fri 7/26/19	40 days	[Gantt bar]																											
14	✓	FOUNDATION REBAR		Fri 5/24/19	Thu 6/6/19	10 days	[Gantt bar]																											
15	✓	FOUNDATIONS CONCRETE POUR		Tue 6/4/19	Fri 8/2/19	44 days	[Gantt bar]																											
16	✓	WEeping TILE AT PERIMETER		Thu 6/20/19	Fri 8/2/19	32 days	[Gantt bar]																											
17	✓	WEeping TILE UNDER SLAB ON GRADE		Mon 7/15/19	Fri 8/2/19	15 days	[Gantt bar]																											
18	✓	STONE FOR SLAB ON GRADE		Mon 7/22/19	Fri 8/2/19	10 days	[Gantt bar]																											
19	✓	VAPOUR BARRIER INSTALLATION U/S SLAB ON GRADE		Mon 7/15/19	Fri 8/2/19	15 days	[Gantt bar]																											
20	✓	FORMING GROUND FLOOR SLAB		Mon 8/19/19	Fri 9/6/19	15 days	[Gantt bar]																											
21	✓	REBAR FOR GROUND FLOOR SLAB		Mon 9/2/19	Fri 9/20/19	15 days	[Gantt bar]																											
22	✓	MECHANICAL / ELECTRICAL ROUGH-INS		Mon 9/2/19	Fri 9/20/19	15 days	[Gantt bar]																											
23	✓	CONCRETE POUR FOR GROUND FLOOR SLAB - suspended		Mon 9/23/19	Tue 9/24/19	2 days	[Gantt bar]																											
24	✓	POUR SLAB ON GRADE - parking slab		Mon 8/5/19	Tue 8/6/19	2 days	[Gantt bar]																											
25	✓	PRECAST STAIRS (STAIR G)		Mon 12/2/19	Wed 5/27/20	128 days	[Gantt bar]																											
26	✓	<b>BASEMENT PARKING STRUCTURE GRIDLINE 12-18</b>		Mon 7/15/19	Wed 5/27/20	228 days	[Summary bar]																											
27	✓	EXCAVATION	work period extended due to 68 davisville issues	Mon 7/15/19	Fri 2/21/20	160 days	[Gantt bar]																											
28	✓	SHORING	additional shoring added b/w grid 16a & 16b, also period extended due to 68 davisville issues	Mon 7/22/19	Fri 12/13/19	105 days	[Gantt bar]																											
29	✓	DETAILED EXCAVATION - FOOTINGS / PIER FOOTING	work period extended due to 68 davisville issues	Mon 8/26/19	Fri 2/28/20	135 days	[Gantt bar]																											
30	✓	WATERPROOFING	work period extended due to 68 davisville issues	Mon 8/12/19	Tue 4/7/20	172 days	[Gantt bar]																											
31	✓	FOUNDATION FORMING + ELEVATOR PIT FORMING	work period extended due to 68 davisville issues	Mon 8/26/19	Wed 3/18/20	148 days	[Gantt bar]																											
32	✓	FOUNDATION REBAR	work period extended due to 68 davisville issues	Mon 8/12/19	Wed 3/18/20	158 days	[Gantt bar]																											
33	✓	FOUNDATIONS CONCRETE POUR	work period extended due to 68 davisville issues	Mon 9/16/19	Wed 3/18/20	133 days	[Gantt bar]																											
34	✓	WEeping TILE AT PERIMETER	work period extended due to 68 davisville issues	Mon 9/30/19	Wed 3/25/20	128 days	[Gantt bar]																											
35	✓	WEeping TILE UNDER SLAB ON GRADE	work period extended due to 68 davisville issues	Mon 10/14/19	Mon 3/9/20	106 days	[Gantt bar]																											
36	✓	STONE FOR SLAB ON GRADE	work period extended due to 68 davisville issues	Wed 10/16/19	Tue 3/10/20	105 days	[Gantt bar]																											
37	✓	VAPOUR BARRIER (fabric cloth) INSTALLATION U/S SLAB ON GRADE	work period extended due to 68 davisville issues	Mon 10/28/19	Mon 3/9/20	96 days	[Gantt bar]																											
38	✓	POUR SLAB ON GRADE - parking slab	work period extended due to 68 davisville issues	Wed 11/20/19	Fri 2/28/20	73 days	[Gantt bar]																											
39	✓	FORMING GROUND-SUSPENDED FLOOR SLAB	work period extended due to 68 davisville issues	Mon 11/25/19	Tue 3/24/20	87 days	[Gantt bar]																											

Project: Redevelopment of Dav Date: Wed 6/10/20

Task	Summary	Inactive Milestone	Duration-only	Start-only	External Milestone	Critical Split
Split	Project Summary	Inactive Summary	Manual Summary Rollup	Finish-only	Deadline	Progress
Milestone	Inactive Task	Manual Task	Manual Summary	External Tasks	Critical	Manual Progress

Page 1



ID	Task Mode	Task Name	Notes	Start	Finish	Duration	Gantt Chart (Timeline from Feb 2020 to Aug 2020)																											
70	✓	PRECAST GROUTING	work period altered due to 68 davisville issues	Tue 12/10/19	Fri 1/31/20	39 days	[Gantt bar from 12/10/19 to 1/31/20]																											
71	✓	MECHANICAL / ELECTRICAL ROUGH-INS	work period altered due to 68 davisville issues	Wed 8/21/19	Fri 6/26/20	223 days	[Gantt bar from 8/21/19 to 6/26/20]																											
72	✓	SPRINKLER ROUGHINS	work period altered due to 68 davisville issues	Wed 8/21/19	Fri 6/26/20	223 days	[Gantt bar from 8/21/19 to 6/26/20]																											
73	✓	HVAC ROUGH INS	work period altered due to 68 davisville issues	Wed 8/21/19	Fri 6/26/20	223 days	[Gantt bar from 8/21/19 to 6/26/20]																											
74	☒	<b>SECOND FLOOR</b>		<b>Mon 1/6/20</b>	<b>Wed 10/28/20</b>	<b>213 days</b>	[Summary bar from 1/6/20 to 10/28/20]																											
75	✓	METAL DECK TOPPING	work period extended due to 68 davisville issues	Mon 3/30/20	Tue 6/2/20	47 days	[Gantt bar from 3/30/20 to 6/2/20]																											
76	✓	LOAD BEARING MASONRY WALLS	work period extended due to 68 davisville issues	Mon 1/6/20	Wed 5/27/20	103 days	[Gantt bar from 1/6/20 to 5/27/20]																											
77	✓	STRUCTURAL STEEL FOR PRECAST & STEEL FOR LOW ROOFS	work period extended due to 68 davisville issues	Mon 1/6/20	Fri 1/24/20	15 days	[Gantt bar from 1/6/20 to 1/24/20]																											
78	✓	PRECAST SLABS - 3rd flr	work period extended due to 68 davisville issues	Mon 2/24/20	Mon 3/2/20	6 days	[Gantt bar from 2/24/20 to 3/2/20]																											
79	✓	PRECAST STAIRS	work period extended due to 68 davisville issues	Mon 2/24/20	Wed 3/4/20	8 days	[Gantt bar from 2/24/20 to 3/4/20]																											
80	✓	PRECAST GROUTING	work period extended due to 68 davisville issues	Mon 2/24/20	Tue 3/10/20	12 days	[Gantt bar from 2/24/20 to 3/10/20]																											
81	✓	PRECAST SLABS TOPPING - 2nd flr	work period extended due to 68 davisville issues	Wed 4/1/20	Tue 4/7/20	5 days	[Gantt bar from 4/1/20 to 4/7/20]																											
82	✓	NON LOAD BEARING MASONRY WALLS	work period extended due to 68 davisville issues	Thu 4/9/20	Fri 7/10/20	67 days	[Gantt bar from 4/9/20 to 7/10/20]																											
83	✓	MECHANICAL / ELECTRICAL ROUGH-INS	work period extended due to 68 davisville issues	Mon 1/6/20	Fri 7/17/20	140 days	[Gantt bar from 1/6/20 to 7/17/20]																											
84	✓	SPRINKLER ROUGHINS	work period extended due to 68 davisville issues	Mon 1/6/20	Fri 7/17/20	140 days	[Gantt bar from 1/6/20 to 7/17/20]																											
85	✓	HVAC ROUGH INS	work period extended due to 68 davisville issues	Mon 1/6/20	Fri 7/17/20	140 days	[Gantt bar from 1/6/20 to 7/17/20]																											
86	✓	STRUCTURAL STEEL EMBEDDED ITEMS FOR GUARD RAILS AT GREEN ROOF	work period extended due to 68 davisville issues	Mon 7/6/20	Mon 8/17/20	31 days	[Gantt bar from 7/6/20 to 8/17/20]																											
87	✓	FORM & POUR GREEN ROOF PLANTERS	work period extended due to 68 davisville issues	Mon 8/17/20	Mon 9/28/20	31 days	[Gantt bar from 8/17/20 to 9/28/20]																											
88	✓	FORM AND POUR CAST IN PLACE RAMPS	work period extended due to 68 davisville issues	Mon 8/17/20	Wed 10/28/20	53 days	[Gantt bar from 8/17/20 to 10/28/20]																											
89	☒	<b>THIRD FLOOR</b>		<b>Mon 2/24/20</b>	<b>Thu 10/15/20</b>	<b>169 days</b>	[Summary bar from 2/24/20 to 10/15/20]																											
90	✓	LOAD BEARING MASONRY WALLS		Mon 2/24/20	Thu 4/9/20	34 days	[Gantt bar from 2/24/20 to 4/9/20]																											
91	✓	STRUCTURAL STEEL FOR ROOF PRECAST		Thu 5/21/20	Thu 5/21/20	1 day	[Gantt bar at 5/21/20]																											
92	✓	PRECAST SLABS - roof slab		Mon 5/25/20	Mon 5/25/20	1 day	[Gantt bar at 5/25/20]																											
93	✓	PRECAST STAIRS		Thu 3/5/20	Thu 3/5/20	0 days	[Gantt bar at 3/5/20]																											
94	✓	PRECAST GROUTING		Mon 5/25/20	Mon 5/25/20	1 day	[Gantt bar at 5/25/20]																											
95	✓	PRECAST SLABS TOPPING - 3rd flr		Mon 5/25/20	Fri 5/29/20	5 days	[Gantt bar from 5/25/20 to 5/29/20]																											
96	✓	NON LOAD BEARING MASONRY WALLS		Fri 5/29/20	Fri 9/25/20	86 days	[Gantt bar from 5/29/20 to 9/25/20]																											
97	✓	MECHANICAL / ELECTRICAL ROUGH-INS		Fri 5/29/20	Thu 10/15/20	100 days	[Gantt bar from 5/29/20 to 10/15/20]																											
98	✓	SPRINKLER ROUGHINS		Fri 5/29/20	Thu 10/15/20	100 days	[Gantt bar from 5/29/20 to 10/15/20]																											
99	✓	HVAC ROUGH INS		Fri 5/29/20	Thu 10/15/20	100 days	[Gantt bar from 5/29/20 to 10/15/20]																											
100	✓	STRUCTURAL STEEL EMBEDDED ITEMS FOR GUARD RAILS AT GREEN ROOF		Mon 7/6/20	Mon 8/17/20	31 days	[Gantt bar from 7/6/20 to 8/17/20]																											
101	✓	FORM & POUR GREEN ROOF CONCRETE CURBS		Mon 8/17/20	Fri 9/4/20	15 days	[Gantt bar from 8/17/20 to 9/4/20]																											
102	☒	<b>ROOF</b>		<b>Tue 5/19/20</b>	<b>Fri 8/28/20</b>	<b>74 days</b>	[Summary bar from 5/19/20 to 8/28/20]																											
103	✓	steel decking		Tue 5/19/20	Tue 6/9/20	16 days	[Gantt bar from 5/19/20 to 6/9/20]																											
104	✓	PRECAST SLABS TOPPING - roof slab		Mon 6/1/20	Fri 7/3/20	25 days	[Gantt bar from 6/1/20 to 7/3/20]																											
105	✓	MASONRY PARRAPET LOW ROOFS		Wed 6/3/20	Tue 7/7/20	25 days	[Gantt bar from 6/3/20 to 7/7/20]																											

Project: Redevelopment of Dav Date: Wed 6/10/20

Task	Summary	Inactive Milestone	Duration-only	Start-only	External Milestone	Critical Split
Split	Project Summary	Inactive Summary	Manual Summary Rollup	Finish-only	Deadline	Progress
Milestone	Inactive Task	Manual Task	Manual Summary	External Tasks	Critical	Manual Progress

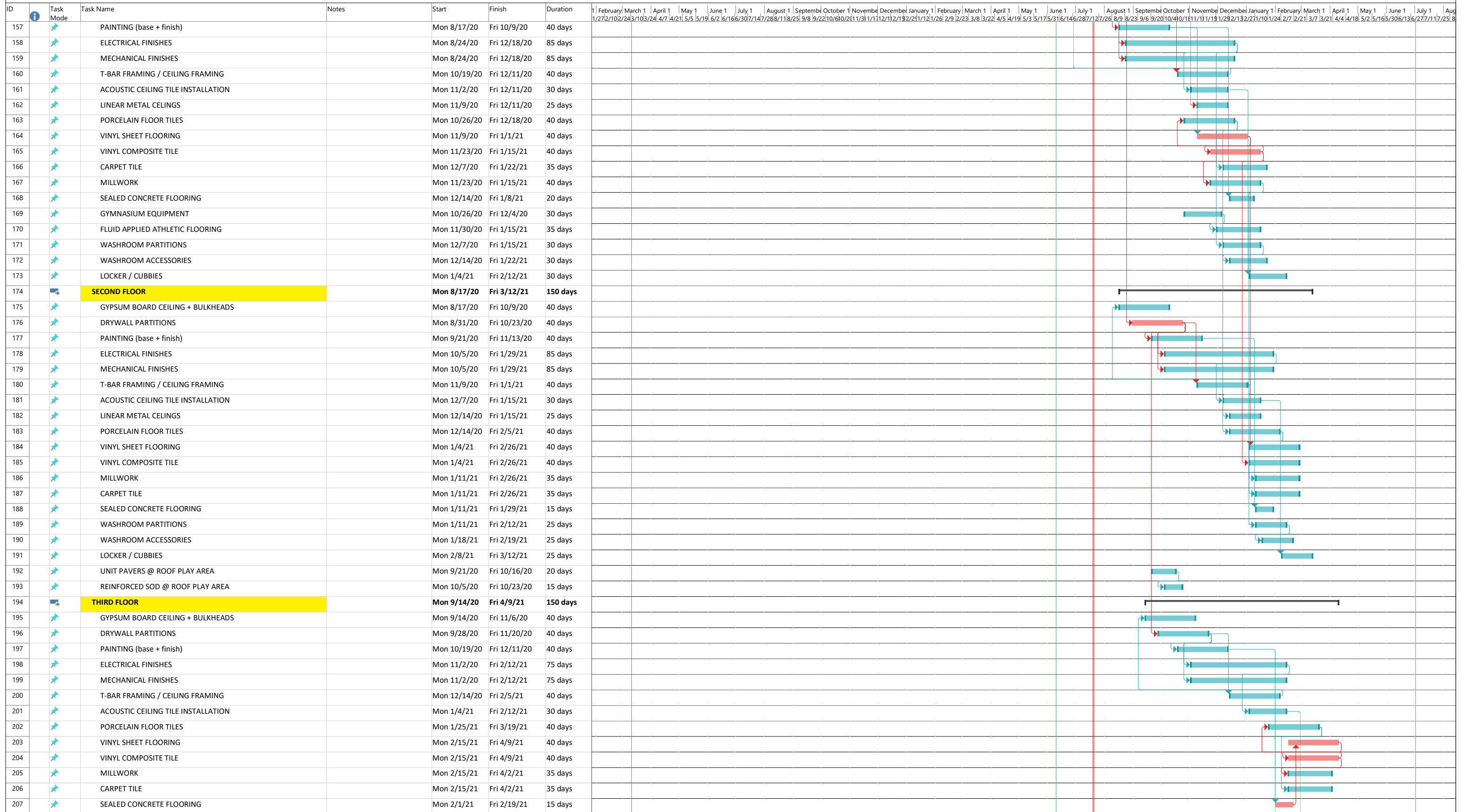
ID	Task Mode	Task Name	Notes	Start	Finish	Duration	Gantt Chart (Timeline from Feb 2020 to Aug 2021)																											
106	Task	MASONRY PARRAPET HIGH ROOFS		Fri 6/19/20	Thu 7/23/20	25 days	[Gantt bar: Fri 6/19/20 to Thu 7/23/20]																											
107	Task	STEEL FRAMING AT PARRAPETS LOW ROOF		Mon 7/6/20	Fri 7/24/20	15 days	[Gantt bar: Mon 7/6/20 to Fri 7/24/20]																											
108	Task	STEEL FRAMING AT PARRAPETS HIGH ROOF		Mon 7/27/20	Fri 8/14/20	15 days	[Gantt bar: Mon 7/27/20 to Fri 8/14/20]																											
109	Task	LIGHT GAGE STEEL STUD PARAPPETS LOW ROOF		Mon 7/13/20	Fri 8/7/20	20 days	[Gantt bar: Mon 7/13/20 to Fri 8/7/20]																											
110	Task	LIGHT GAGE STEEL STUD PARAPPETS HIGH ROOF		Mon 7/27/20	Fri 8/21/20	20 days	[Gantt bar: Mon 7/27/20 to Fri 8/21/20]																											
111	Task	ELEVATOR SHAFT WALLS		Mon 7/27/20	Fri 8/7/20	10 days	[Gantt bar: Mon 7/27/20 to Fri 8/7/20]																											
112	Task	ROOF TYPE R4 & R3		Mon 7/6/20	Fri 8/28/20	40 days	[Gantt bar: Mon 7/6/20 to Fri 8/28/20]																											
113	Task	ROOF TYPE R1 & R2		Mon 7/6/20	Fri 8/28/20	40 days	[Gantt bar: Mon 7/6/20 to Fri 8/28/20]																											
114	Task	RTU INSTALL		Mon 8/3/20	Fri 8/7/20	5 days	[Gantt bar: Mon 8/3/20 to Fri 8/7/20]																											
115	Summary	<b>BUILDING ENVELOPE</b>		Mon 7/13/20	Fri 12/4/20	105 days	[Summary bar: Mon 7/13/20 to Fri 12/4/20]																											
116	Summary	<b>SOUTH ELEVATION</b>		Mon 7/13/20	Fri 10/9/20	65 days	[Summary bar: Mon 7/13/20 to Fri 10/9/20]																											
117	Task	CURTAIN WALL / ALUMINUM WINDOWS		Mon 7/13/20	Fri 8/7/20	20 days	[Gantt bar: Mon 7/13/20 to Fri 8/7/20]																											
118	Task	SPRAY FOAM INSULATION		Mon 7/20/20	Fri 8/7/20	15 days	[Gantt bar: Mon 7/20/20 to Fri 8/7/20]																											
119	Task	BRICK VENEER		Mon 7/27/20	Fri 9/11/20	35 days	[Gantt bar: Mon 7/27/20 to Fri 9/11/20]																											
120	Task	METAL WALL PANEL		Mon 8/3/20	Fri 8/28/20	20 days	[Gantt bar: Mon 8/3/20 to Fri 8/28/20]																											
121	Task	ALUMINUM COMPOSITE PANEL		Mon 8/17/20	Fri 9/11/20	20 days	[Gantt bar: Mon 8/17/20 to Fri 9/11/20]																											
122	Task	SIGHT SCREEN		Mon 9/28/20	Fri 10/9/20	10 days	[Gantt bar: Mon 9/28/20 to Fri 10/9/20]																											
123	Task	SUN CONTROL DEVICES		Mon 9/28/20	Fri 10/9/20	10 days	[Gantt bar: Mon 9/28/20 to Fri 10/9/20]																											
124	Summary	<b>WEST ELEVATION</b>		Mon 7/20/20	Fri 10/9/20	60 days	[Summary bar: Mon 7/20/20 to Fri 10/9/20]																											
125	Task	CURTAIN WALL / ALUMINUM WINDOWS		Mon 7/20/20	Fri 8/14/20	20 days	[Gantt bar: Mon 7/20/20 to Fri 8/14/20]																											
126	Task	SPRAY FOAM INSULATION		Mon 7/27/20	Fri 8/14/20	15 days	[Gantt bar: Mon 7/27/20 to Fri 8/14/20]																											
127	Task	BRICK VENEER		Mon 8/3/20	Fri 9/18/20	35 days	[Gantt bar: Mon 8/3/20 to Fri 9/18/20]																											
128	Task	METAL WALL PANEL		Mon 9/7/20	Fri 10/2/20	20 days	[Gantt bar: Mon 9/7/20 to Fri 10/2/20]																											
129	Task	ALUMINUM COMPOSITE PANEL		Mon 9/14/20	Fri 10/9/20	20 days	[Gantt bar: Mon 9/14/20 to Fri 10/9/20]																											
130	Task	SUN CONTROL DEVICES		Mon 9/28/20	Fri 10/9/20	10 days	[Gantt bar: Mon 9/28/20 to Fri 10/9/20]																											
131	Summary	<b>NORTH ELEVATION</b>		Mon 7/27/20	Fri 10/30/20	70 days	[Summary bar: Mon 7/27/20 to Fri 10/30/20]																											
132	Task	CURTAIN WALL / ALUMINUM WINDOWS		Mon 7/27/20	Fri 8/28/20	25 days	[Gantt bar: Mon 7/27/20 to Fri 8/28/20]																											
133	Task	SPRAY FOAM INSULATION		Mon 8/3/20	Fri 8/21/20	15 days	[Gantt bar: Mon 8/3/20 to Fri 8/21/20]																											
134	Task	BRICK VENEER		Mon 8/10/20	Fri 9/25/20	35 days	[Gantt bar: Mon 8/10/20 to Fri 9/25/20]																											
135	Task	ALUMINUM COMPOSITE PANEL		Mon 10/5/20	Fri 10/30/20	20 days	[Gantt bar: Mon 10/5/20 to Fri 10/30/20]																											
136	Task	METAL WALL PANEL		Mon 10/5/20	Fri 10/30/20	20 days	[Gantt bar: Mon 10/5/20 to Fri 10/30/20]																											
137	Summary	<b>EAST ELEVATION</b>		Mon 8/3/20	Fri 12/4/20	90 days	[Summary bar: Mon 8/3/20 to Fri 12/4/20]																											
138	Task	CURTAIN WALL / ALUMINUM WINDOWS		Mon 8/3/20	Fri 9/4/20	25 days	[Gantt bar: Mon 8/3/20 to Fri 9/4/20]																											
139	Task	SPRAY FOAM INSULATION		Mon 8/10/20	Fri 8/28/20	15 days	[Gantt bar: Mon 8/10/20 to Fri 8/28/20]																											
140	Task	BRICK VENEER		Mon 8/17/20	Fri 10/2/20	35 days	[Gantt bar: Mon 8/17/20 to Fri 10/2/20]																											
141	Task	METAL WALL PANEL		Mon 10/19/20	Fri 11/13/20	20 days	[Gantt bar: Mon 10/19/20 to Fri 11/13/20]																											
142	Task	ALUMINUM COMPOSITE PANEL		Mon 11/9/20	Fri 12/4/20	20 days	[Gantt bar: Mon 11/9/20 to Fri 12/4/20]																											
143	Task	OVER HEAD DOOR		Mon 11/23/20	Fri 12/4/20	10 days	[Gantt bar: Mon 11/23/20 to Fri 12/4/20]																											
144	Summary	<b>FINISHES</b>		Mon 7/6/20	Fri 4/9/21	200 days	[Summary bar: Mon 7/6/20 to Fri 4/9/21]																											
145	Summary	<b>BASEMENT LEVEL</b>		Mon 7/27/20	Tue 10/27/20	67 days	[Summary bar: Mon 7/27/20 to Tue 10/27/20]																											
146	Task	PAINTING		Mon 7/27/20	Fri 8/28/20	25 days	[Gantt bar: Mon 7/27/20 to Fri 8/28/20]																											
147	Task	METAL ROOF AT RAMP		Mon 8/10/20	Fri 9/4/20	20 days	[Gantt bar: Mon 8/10/20 to Fri 9/4/20]																											
148	Task	ELECTRICAL FINISHES		Mon 8/3/20	Fri 9/25/20	40 days	[Gantt bar: Mon 8/3/20 to Fri 9/25/20]																											
149	Task	MECHANICAL FINISHES		Mon 8/3/20	Fri 9/25/20	40 days	[Gantt bar: Mon 8/3/20 to Fri 9/25/20]																											
150	Task	CEILING - SEMI RIGID INSULATION W/ WHITE PLASTIC INSTALLATION		Mon 9/7/20	Fri 10/2/20	20 days	[Gantt bar: Mon 9/7/20 to Fri 10/2/20]																											
151	Task	PORCELAIN FLOOR TILES		Mon 10/5/20	Fri 10/16/20	10 days	[Gantt bar: Mon 10/5/20 to Fri 10/16/20]																											
152	Task	SEALED CONCRETE FLOORING		Mon 10/5/20	Fri 10/9/20	5 days	[Gantt bar: Mon 10/5/20 to Fri 10/9/20]																											
153	Task	BIKE STORAGE ENCLOSURE		Mon 10/26/20	Tue 10/27/20	2 days	[Gantt bar: Mon 10/26/20 to Tue 10/27/20]																											
154	Summary	<b>GROUND FLOOR</b>		Mon 7/6/20	Fri 2/12/21	160 days	[Summary bar: Mon 7/6/20 to Fri 2/12/21]																											
155	Task	GYPSUM BOARD CEILING + BULKHEADS		Mon 7/6/20	Fri 8/28/20	40 days	[Gantt bar: Mon 7/6/20 to Fri 8/28/20]																											
156	Task	DRYWALL PARTITIONS		Mon 7/27/20	Fri 9/18/20	40 days	[Gantt bar: Mon 7/27/20 to Fri 9/18/20]																											

Project: Redevelopment of Dav Date: Wed 6/10/20

Task		Summary		Inactive Milestone		Duration-only		Start-only		External Milestone		Critical Split	
Split		Project Summary		Inactive Summary		Manual Summary Rollup		Finish-only		Deadline		Progress	
Milestone		Inactive Task		Manual Task		Manual Summary		External Tasks		Critical		Manual Progress	



REDEVELOPMENT OF DAVISVILLE JR. PUBLIC SCHOOL



Project: Redevelopment of Dav Date: Wed 6/10/20

Task	Summary	Inactive Milestone	Duration-only	Start-only	External Milestone	Critical Split
Split	Project Summary	Inactive Summary	Manual Summary Rollup	Finish-only	Deadline	Progress
Milestone	Inactive Task	Manual Task	Manual Summary	External Tasks	Critical	Manual Progress

ID	Task Mode	Task Name	Notes	Start	Finish	Duration	Gantt Chart (Timeline from Feb 2020 to Aug 2021)																											
208	✈	WASHROOM PARTITIONS		Mon 2/8/21	Fri 3/12/21	25 days	[Gantt bar: Feb 8 - Mar 6, 2021]																											
209	✈	WASHROOM ACCESSORIES		Mon 2/8/21	Fri 3/12/21	25 days	[Gantt bar: Feb 8 - Mar 6, 2021]																											
210	✈	LOCKERS / CUBBIES		Mon 3/1/21	Fri 4/2/21	25 days	[Gantt bar: Mar 1 - Mar 30, 2021]																											
211	✈	UNIT PAVERS @ ROOF PLAY AREA		Mon 10/5/20	Fri 10/30/20	20 days	[Gantt bar: Oct 5 - Oct 24, 2020]																											
212	✈	REINFORCED SOD @ ROOF PLAY AREA		Mon 10/12/20	Fri 10/30/20	15 days	[Gantt bar: Oct 12 - Oct 26, 2020]																											
213	✈	WOOD STAGE CONSTRUCTION @ ROOF PLAY AREA		Mon 10/19/20	Fri 11/6/20	15 days	[Gantt bar: Oct 19 - Nov 3, 2020]																											
214	✈	EXTERIOR FURNISHINGS @ ROOF PLAY AREA (BENCHES, TIRES, PLANTERS, DIP BENCH)		Mon 10/26/20	Fri 11/13/20	15 days	[Gantt bar: Oct 26 - Nov 10, 2020]																											
215	✈	ELEVATOR INSTALL		Mon 10/5/20	Fri 11/27/20	40 days	[Gantt bar: Oct 5 - Nov 20, 2020]																											
216	✈	<b>EXTERIOR SITE WORKS</b>		Wed 4/1/20	Fri 11/20/20	168 days	[Gantt bar: Apr 1 - Dec 18, 2020]																											
217	✈	<b>DAVISVILLE AVENUE / MILLWOOD ROAD</b>		Wed 4/1/20	Fri 11/20/20	168 days	[Gantt bar: Apr 1 - Dec 18, 2020]																											
218	✓ ✈	STORM SEWER		Wed 4/1/20	Fri 5/22/20	38 days	[Gantt bar: Apr 1 - May 19, 2020]																											
219	✓ ✈	SANITARY SEWER		Wed 4/1/20	Thu 4/30/20	22 days	[Gantt bar: Apr 1 - Apr 22, 2020]																											
220	✓ ✈	WATERMAIN		Wed 4/1/20	Fri 4/17/20	13 days	[Gantt bar: Apr 1 - Apr 14, 2020]																											
221	✈	MANHOLE + CATCH BASINS		Wed 4/1/20	Fri 6/19/20	58 days	[Gantt bar: Apr 1 - Jun 19, 2020]																											
222	✈	WATERPROOFING U/S PAVING AREAS		Mon 7/27/20	Fri 8/14/20	15 days	[Gantt bar: Jul 27 - Aug 11, 2020]																											
223	✈	PERFORATED SUBDRAIN INSTALLATION FOR TURF FIELD		Mon 8/10/20	Fri 8/28/20	15 days	[Gantt bar: Aug 10 - Aug 24, 2020]																											
224	✈	ARTIFICIAL TURF INSTALLATION		Mon 10/5/20	Fri 10/16/20	10 days	[Gantt bar: Oct 5 - Oct 15, 2020]																											
225	✈	CONCRETE CURBS		Mon 8/24/20	Fri 9/4/20	10 days	[Gantt bar: Aug 24 - Sep 4, 2020]																											
226	✈	CONCRETE SIDEWALK PAVING		Mon 9/7/20	Fri 9/18/20	10 days	[Gantt bar: Sep 7 - Sep 17, 2020]																											
227	✈	PLANTER CURBS		Mon 9/21/20	Fri 10/2/20	10 days	[Gantt bar: Sep 21 - Oct 1, 2020]																											
228	✈	PERFORATED SUBDRAIN INSTALLATION FOR LANDSCAPE		Mon 9/28/20	Fri 10/2/20	5 days	[Gantt bar: Sep 28 - Oct 3, 2020]																											
229	✈	SAND PIT INSTALLATIONS - LONG JUMP / PLAY AREAS		Mon 10/5/20	Fri 10/9/20	5 days	[Gantt bar: Oct 5 - Oct 9, 2020]																											
230	✈	ASPHALT PAVING (base coat)		Mon 9/28/20	Fri 10/9/20	10 days	[Gantt bar: Sep 28 - Oct 8, 2020]																											
231	✈	ASPHALT PAVING ON CONCL SLAB (base coat)		Mon 10/12/20	Fri 10/23/20	10 days	[Gantt bar: Oct 12 - Oct 22, 2020]																											
232	✈	BASKETBALL COURT ASPHALT PAVING		Mon 10/26/20	Fri 10/30/20	5 days	[Gantt bar: Oct 26 - Oct 30, 2020]																											
233	✈	LONG JUMP ASPHALT PAVING		Mon 11/2/20	Fri 11/6/20	5 days	[Gantt bar: Nov 2 - Nov 6, 2020]																											
234	✈	ASPHALT PAVING (final coat all areas)		Mon 11/9/20	Fri 11/13/20	5 days	[Gantt bar: Nov 9 - Nov 13, 2020]																											
235	✈	LINE PAINTINGS		Mon 11/16/20	Fri 11/20/20	5 days	[Gantt bar: Nov 16 - Nov 20, 2020]																											
236	✈	FENCE INSTALLATION		Mon 9/21/20	Fri 10/9/20	15 days	[Gantt bar: Sep 21 - Oct 10, 2020]																											
237	✈	TOPSOIL		Mon 10/5/20	Fri 10/16/20	10 days	[Gantt bar: Oct 5 - Oct 15, 2020]																											
238	✈	PLANTING		Mon 10/12/20	Fri 10/23/20	10 days	[Gantt bar: Oct 12 - Oct 22, 2020]																											
239	✈	SODDING		Mon 10/26/20	Fri 10/30/20	5 days	[Gantt bar: Oct 26 - Oct 30, 2020]																											
240	✈	REINFORCED SOD @ EXTERIOR PLAY AREAS		Mon 11/2/20	Fri 11/6/20	5 days	[Gantt bar: Nov 2 - Nov 6, 2020]																											
241	✈	WOOD CURBS / FURNITURE		Mon 11/2/20	Fri 11/6/20	5 days	[Gantt bar: Nov 2 - Nov 6, 2020]																											
242	✈																																	
243	✈	CONSULTANT DEFICIENCY REVIEWS		Mon 2/1/21	Fri 2/26/21	20 days	[Gantt bar: Feb 1 - Feb 20, 2021]																											
244	✈	DEFICIENCY CORRECTION		Mon 3/1/21	Fri 6/11/21	75 days	[Gantt bar: Mar 1 - May 11, 2021]																											
245	✈	CONSULTANT DEFICIENCY RE-REVIEW / SIGN-OFF		Mon 5/3/21	Fri 5/28/21	20 days	[Gantt bar: May 3 - May 23, 2021]																											
246	✈	VERIFICATION + COMMISSIONING + BALANCING		Mon 3/1/21	Fri 6/11/21	75 days	[Gantt bar: Mar 1 - May 11, 2021]																											
247	✈	CONSTRUCTION CLEAN		Mon 5/24/21	Fri 6/11/21	15 days	[Gantt bar: May 24 - Jun 8, 2021]																											
248	✈	CONSULTANT OCCUPANCY REVIEWS		Mon 6/14/21	Fri 6/18/21	5 days	[Gantt bar: Jun 14 - Jun 18, 2021]																											
249	✈	OCCUPANCY		Mon 6/28/21	Mon 6/28/21	1 day	[Gantt bar: Jun 28, 2021]																											
250	✈	SUBSTANTIAL		Thu 7/1/21	Thu 7/1/21	1 day	[Gantt bar: Jul 1, 2021]																											

Project: Redevelopment of Dav Date: Wed 6/10/20

Task		Summary		Inactive Milestone		Duration-only		Start-only		External Milestone		Critical Split	
Split		Project Summary		Inactive Summary		Manual Summary Rollup		Finish-only		Deadline		Progress	
Milestone		Inactive Task		Manual Task		Manual Summary		External Tasks		Critical		Manual Progress	