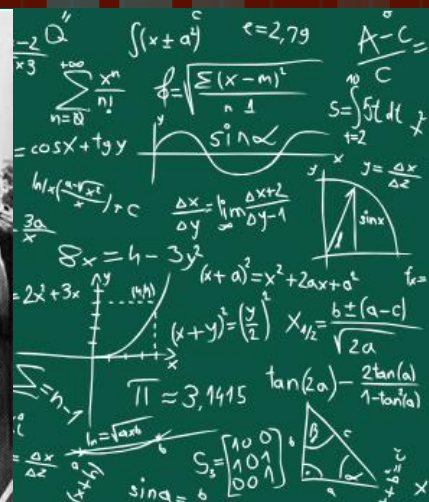


# 2023-2024 COURSE SELECTIONS

Gr. 9 + 12

Dr. Norman Bethune C. I.







Looking  
**Ahead**



**IT**

**STARTS**

**WITH**

**YOU**



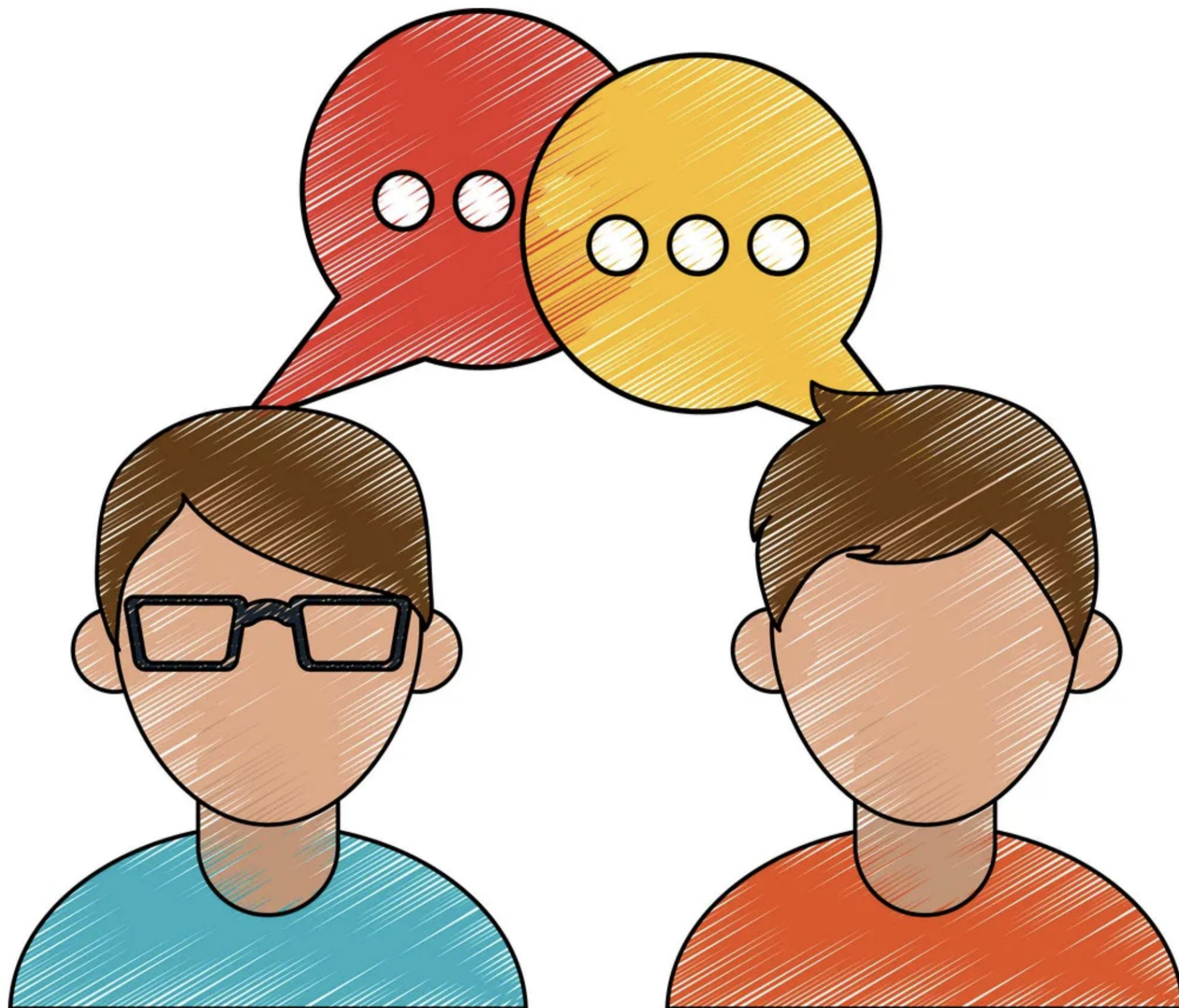
# PLAN





# Plan for YOU





**TALK about it**





**THINK about it**



THE TIME IS **NOW**



**Start NOW!!**





**Look for your passion**





**Find what fits you**



**Start with....**



**myBlueprint**

**[www.MyBlueprint.ca/TDSB](http://www.MyBlueprint.ca/TDSB)**





Home

Who Am I

High School

Post-Secondary

Work

Money

Guides

Favourites

## Who Am I

Surveys

Match Results

### Surveys

#### Learning Styles

Do you remember what you read? Are you good at remembering  
Everyone has different styles of learning they like best. What are

Start Survey

#### Personality

You are a unique individual; but we all have personality traits that  
similar to others. Understand your personality to find opportunities



# O.S.S.D.

- 40 hours of community involvement
- Literacy requirement
- 30 credits
  - 18 compulsory
  - 12 optional
- 2 Online e-Learning credits





# Online eLearning Credit Requirement

Currently in Gr. 9

- 2 eLearning credits or Opt out

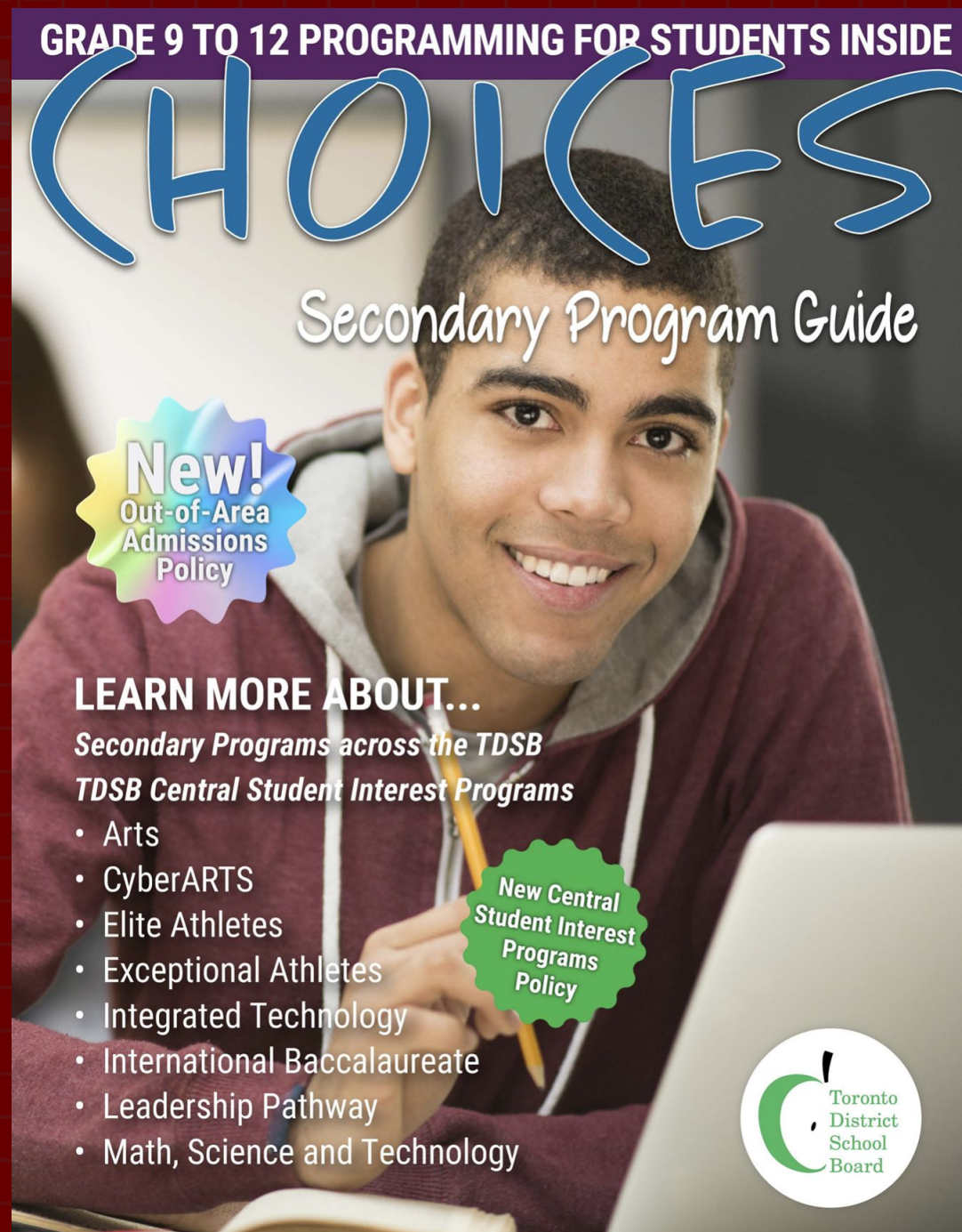
Currently in Gr. 12

- No eLearning credit required



# TDSB Choices

## Secondary Program Guide





**How many courses  
do I to take?**

**Next year in Gr. 10**  
**8 courses**



**How many courses  
do I to take?**

**Currently in Gr. 12**  
**7 or 8 courses**  
**or Not Returning**



**All students**  
**must complete**  
**Course Selections**

**That means you too**  
**Grade 12s!!**



# Research Post-Secondary



myBlueprint

ONTARIO  
COLLEGES .CA™

[www.OntarioColleges.ca](http://www.OntarioColleges.ca)

The logo features a stylized graphic of colored dots in a grid-like pattern to the left of the text.

ONTARIO  
UNIVERSITIES'  
INFO

[www.OntarioUniversitiesinfo.ca](http://www.OntarioUniversitiesinfo.ca)



# Important Dates

**Thurs. Feb. 16 @ 11:45am**

**Course Selection Marketplace in cafeteria**

**Thurs. Feb. 16 @ 4pm**

**Course Selection: 1<sup>st</sup> day to Submit**

**Thurs. Feb. 23 @ 4pm**

**Deadline for Submission of courses on  
[www.MyBlueprint.ca/TDSB](http://www.MyBlueprint.ca/TDSB)**

**Submit it!**

**To Win it!**



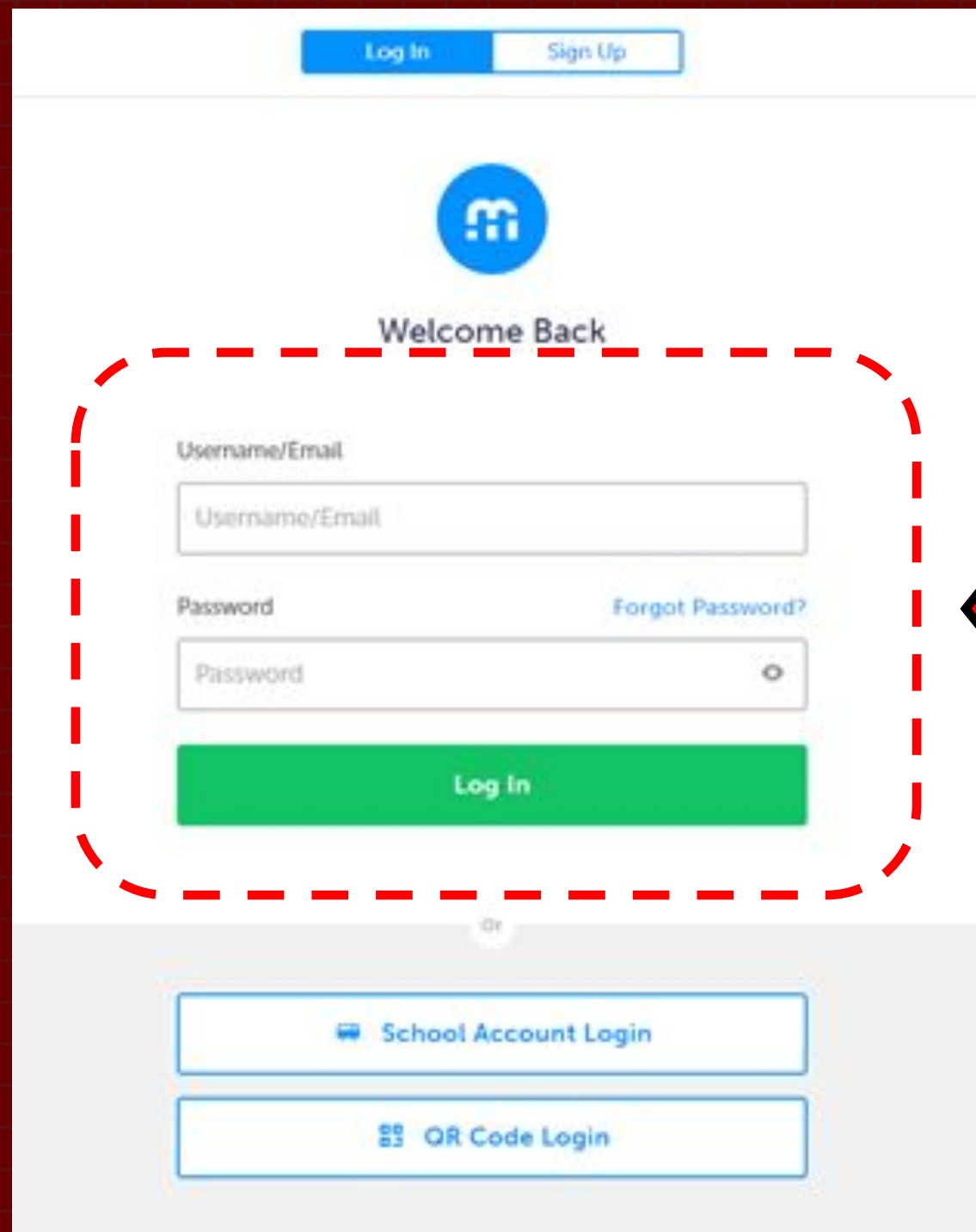


**myBlueprint**

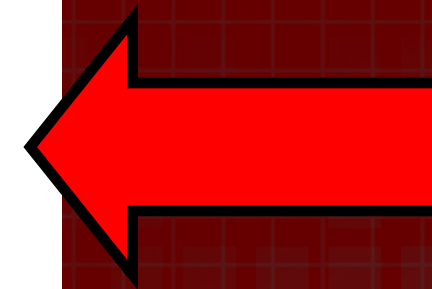
**Course selections done through**

**[www.MyBlueprint.ca/TDSB](http://www.MyBlueprint.ca/TDSB)**

Visit [www.myBlueprint.ca/TDSB](http://www.myBlueprint.ca/TDSB)



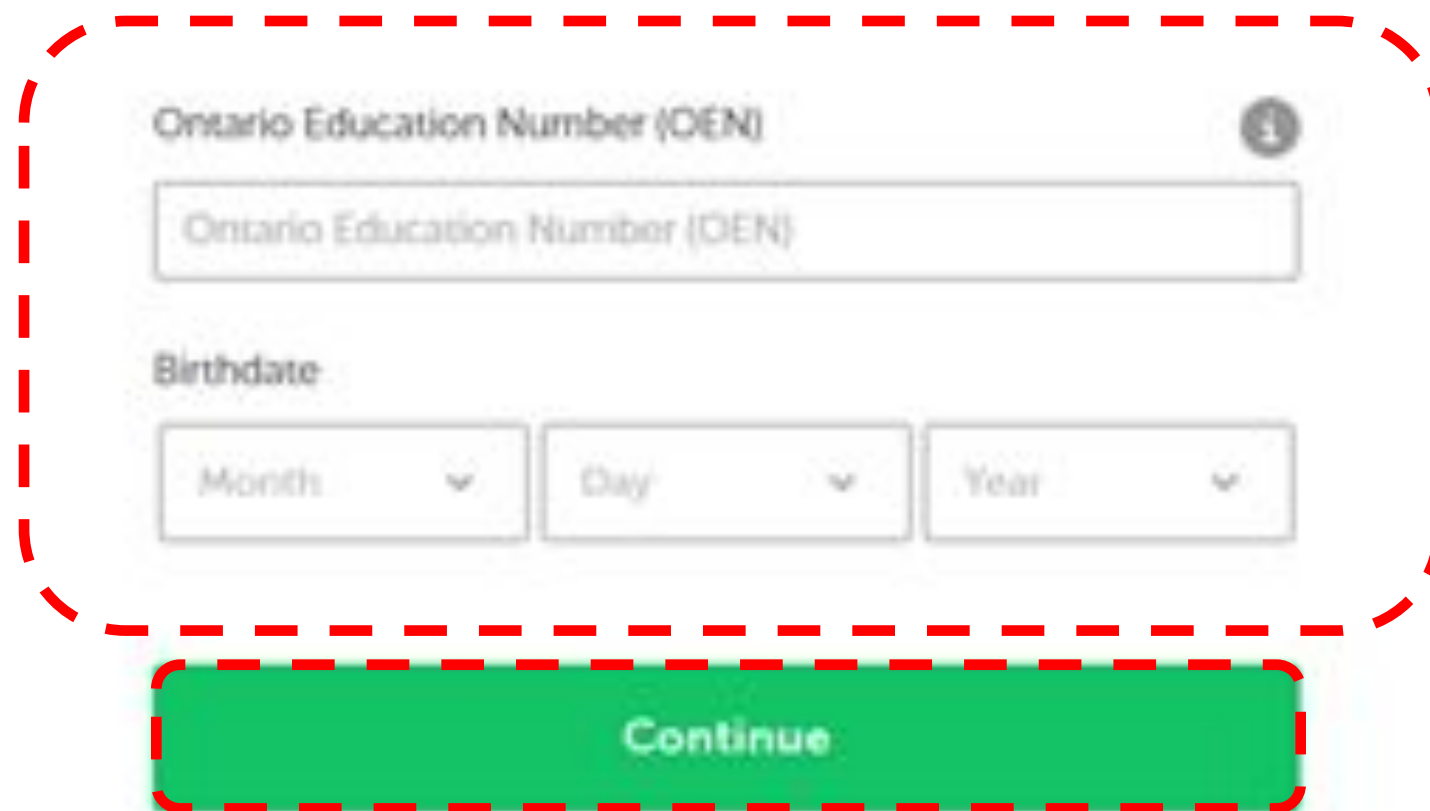
The screenshot shows the login interface of the myBlueprint.ca website. At the top, there are two buttons: "Log In" (highlighted in blue) and "Sign Up". Below these is the myBlueprint logo, a blue circle with a white 'm' and 'b'. The text "Welcome Back" is centered below the logo. A red dashed rounded rectangle highlights the login fields: a "Username/Email" input field, a "Password" input field with a toggle icon, and a green "Log In" button. To the right of the password field is a link for "Forgot Password?". Below the highlighted area, there is a small "Or" separator, followed by two buttons: "School Account Login" and "QR Code Login".



**Enter your E-Mail Address + Password**



# If you are new... enter your OEN & Birth Date



A registration form with a dashed red border. It contains two main sections: 'Ontario Education Number (OEN)' and 'Birthdate'. The 'OEN' section has a text input field with a placeholder 'Ontario Education Number (OEN)' and an information icon. The 'Birthdate' section has three dropdown menus for 'Month', 'Day', and 'Year'. Below these fields is a green 'Continue' button.

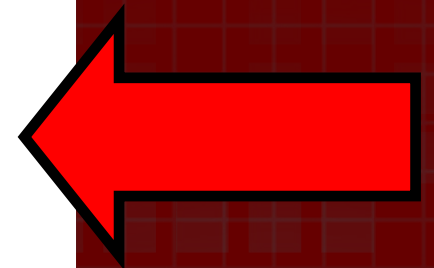
Ontario Education Number (OEN) ⓘ

Ontario Education Number (OEN)

Birthdate

Month ▼ Day ▼ Year ▼

Continue



# Click on **High School**

Home

Who Am I

High School

Post-Secondary

Work

Money

Guides

Favourites

High School

Plan

Courses

Official High School Plan

✕

Your courses are **Not Submitted**

1

Step 1

Add Courses

2

Step 2

Review Courses

3

Step 3

Submit Courses

Review Course Selections

Grade 9 Current Year	Grade 10 Next Year	Grade 11 Plan Ahead	Grade 12 Plan Ahead	
English (Academic) ENG1D1 • 1 Credit	English	English	English	
Mathematics MTH1W1 • 1 Credit	Mathematics	Mathematics	Course	
Science (Academic) SNC1D1 • 1 Credit	Science	Course	Course	
Core French (Academic) FSF1D1 • 1 Credit	History	Course	Course	
Issues in Canadian Geogra... COC1D1 • 1 Credit	Civics/Careers	Course	Course	

Gradual

8/30

REQUIR

8

Plann

SHSM P

Your sch

High Sk



# Official High School Plan

Home

Who Am I

High School

Post-Secondary

Work

Money

Guides

Favourites

Student Account

Gr. 9

Abigail Villamin

High School

Plan Courses

Official High School Plan

View Plan

Your courses are **Not Submitted**

1 Step 1  
Add Courses

2 Step 2  
Review Courses

3 Step 3  
Submit Courses

Review Course Selections

Grade 9 Current Year	Grade 10 Next Year	Grade 11 Plan Ahead	Grade 12 Plan Ahead
English (Academic) ENG1D1 • 1 Credit	English	English	English
Mathematics MTH1W1 • 1 Credit	Mathematics	Mathematics	Course
Science (Academic) SNC1D1 • 1 Credit	Science	Course	Course
Core French (Academic) FSF1D1 • 1 Credit	History	Course	Course
Issues in Canadian Geogra... COC1D1 • 1 Credit	Civics/Careers	Course	Course

Graduation Indicator

8/30  
REQUIRED CREDITS

8  
Planned

0  
Earned

8  
Total

View Progress

SHSM Planner

Your school offers 1 Specialist  
High Skills Majors

Learn More

# Select “Not Returning next year?”

## High School

[Plan](#) [Courses](#)

Dr. Norman Bethune Collegiate Institute

[View Plans](#)

✕ Your courses are **Not Submitted**

[Not returning next year?](#)

**1** Step 1  
Add Courses

**2** Step 2  
Review Courses

**3** Step 3  
Submit Courses

[Review Courses](#)

Grade 9 Completed	Grade 10 Completed	Grade 11 Completed	Grade 12 Current Year	
✚ English	✚ English	✚ English	✚ English	+
✚ Mathematics	✚ Mathematics	✚ Mathematics	✚ Course	
✚ Science	✚ Science	✚ Course	✚ Course	
✚ Français	✚ History	✚ Course	✚ Course	
✚ Geography	✚ Civics/Careers	✚ Course	✚ Course	

### Graduation Indicator

0/30

REQUIRED CREDITS

0  
Planned

0  
Earned

0  
Total

[View Progress](#)

### SHSM Planner

Your school offers 1 Specialist  
High Skills Majors

[Learn More](#)



# Click on + to Add a course

## High School

[Course Selection Resources](#)[Plan](#) [Courses](#)

## Official High School Plan

[View Plans](#)


 Your courses are **Not Submitted**

**1** Step 1  
Add Courses

**2** Step 2  
Review Courses

**3** Step 3  
Submit Courses

[Review Course Selections](#)

Grade 9 Current Year	Grade 10 Next Year	Grade 11 Plan Ahead	Grade 12 Plan Ahead	
English (Academic) ENG1D1 • 1 Credit	<input type="radio"/> English	<input type="radio"/> English	<input type="radio"/> English	
Mathematics MTH1W1 • 1 Credit	<input type="radio"/> Mathematics	<input type="radio"/> Mathematics	<input type="radio"/> Course	
Science (Academic) SNC1D1 • 1 Credit	<input type="radio"/> Science	<input type="radio"/> Course	<input type="radio"/> Course	
Core French (Academic) FSF1D1 • 1 Credit	<input type="radio"/> History	<input type="radio"/> Course	<input type="radio"/> Course	
Issues in Canadian Geogra... COC1D1 • 1 Credit	<input type="radio"/> Civics/Careers	<input type="radio"/> Course	<input type="radio"/> Course	

### Graduation Indicator

8/30

REQUIRED CREDITS



8  
Planned

0  
Earned

8  
Total

[View Progress](#)

### SHSM Planner

Your school offers 1 Specialist  
High Skills Majors

[Learn More](#)

# Search and click on the course you want to add

The screenshot shows a web application interface for course selection. On the left is a dark blue sidebar with navigation links: Home, Who Am I, High School, Post-Secondary, Work, Money, Guides, and Favourites. The main content area has a top header with a dropdown menu set to 'Dr. Norman Bethune Collegiate Institute'. Below this is a search bar labeled 'Search Courses...' and two filter dropdowns labeled 'Grade' and 'English'. A red dashed box highlights the search bar and the 'English' filter. Below the filters, it says 'Displaying 8 Courses'. A list of courses is shown, with the first one, 'English (Academic)', marked as 'Added'. The fourth course, 'English Grade 11 • ENG3C1 • 1 Credit', is highlighted with a red dashed box. A large red arrow points from this box towards the right side of the screen.

Dr. Norman Bethune Collegiate Institute

Search Courses...

Filters

Grade

English

Displaying 8 Courses

English (Academic)  
Grade 9 • ENG1D1 • 1 Credit

English  
Grade 10 • ENG2D1 • 1 Credit

English  
Grade 10 • ENG2L1 • 1 Credit

English  
Grade 11 • ENG3C1 • 1 Credit

English  
Grade 11 • ENG3U1 • 1 Credit

English  
Grade 12 • ENG4C1 • 1 Credit

English  
Grade 12 • ENG4U1 • 1 Credit

Ontario Secondary School Literacy Course  
Grade 12 • OLC4O1 • 1 Credit

Added



# Click on **View Progress**

## High School

[Course Selection Resources](#)

### Graduation Progress



8  
Planned

0  
Earned

30  
Required

#### Compulsory

0/18 Credits

Planned

Earned

Required

4 Credits in English (1 credit per grade)

1

0

1/4

1 Credit in French As a Second Language

1

0

1/1

3 Credits in Mathematics (at least 1 credit at the grade 11 or grade 12 level)

1

0

1/3

2 Credits in Science

1

0

1/2

1 Credit in Arts

1

0

1/1

1 Credit in Health and Physical Education

1

0

1/1

0.5 Credit in Civics

0

0

0/0.5

[View Plans](#)

#### Graduation Indicator

8/30

REQUIRED CREDITS



8

Planned

0

Earned

8

Total

[View Progress](#)

#### SHSM Planner

Your school offers 1 Specialist High Skills Majors



[Learn More](#)

# Review your selections + submit

! Review your course selections before submitting

✓ Step 1  
Add Courses

2 Step 2  
Review Courses

3 Step 3  
Submit Courses

Submit Course Selections

## Review Course Selections

✓ ENG3U1 English	No Issues
✓ MCR3U1 Functions	No Issues
✓ SBI3U1 Biology	No Issues
✓ SCH3U1 Chemistry	No Issues
✓ AWS3M1 Visual Arts - Digital Media and Computers in the Arts	No Issues
✓ EMS3O1 Media Studies	No Issues
✓ HPC3O1 Raising Healthy Children	No Issues
✓ CGF3M1 Forces of Nature: Physical Processes and Disasters	No Issues

Click **Submit Course Selections**



# Parent/Guardian Digital Verification

mail your parent/guardian so that they may confirm your selections

Step 1  
Add Courses

SS

Course selections h

Speak to your Cou

to High School

Send Approval E

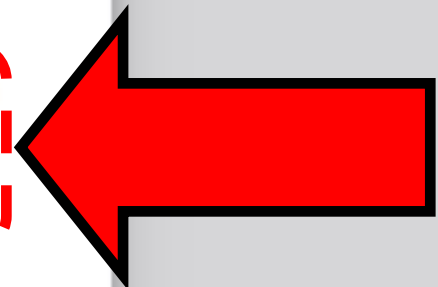


## Parent/Guardian Approval

Please add a parent or guardian email below for us to share your course selection.

Your parent/guardian will be asked to approve your course selections.

Parent/Guardian Email



Send Approval Email

# Gr. 12s...

- Remember to submit Course Selections.
- Thanks for your attention.
- You can now return to your period 2 class.



# Course Information

# Courses to select for Gr. 10...

- English
- Math
- Science
- History
- Civcar (civics + careers)
- 3 x electives





**Do not include summer school  
as a part of your course  
selection planning.**

# Prerequisites

**vs.**

# Strongly Recommended



# Business

**BTT101 = BTT201**

**BBI101 = BBI201**

# Computer Studies

ICS201 ➡ ICD201



# **Instrumental Music**

**Repertoire Music (outside of  
school day)**

**To take AMR...**

- **you must be taking AMI (or AMV by teacher permission)**
- **AMR can be taken as a 9th course**

# Instrumental Music

Guitar (Beginner)

A red starburst graphic with multiple points, containing the word 'New!' in yellow.

**New!**

- **Grade 10 - AMG201**



# ESL Sensitive Courses

A red starburst graphic with multiple points, containing the word 'New!' in yellow.

**New!**

**Presentations and  
Speaking Skills -  
EPS308**

# ESL Sensitive Courses

A red starburst graphic with a jagged, multi-pointed shape, containing the word 'New!' in yellow.

**New!**

**Drama - ADA108**

**Learning Strategies -  
GLS108**



# Remember...





# Remember...



**Do course selections with  
parent(s) or guardian**



# Remember...



**Have questions?**  
**Ask teachers and counsellors**

# Remember...



**Help is  
available...**

**Feb 21,  
22, 23.**

**Counsellors are available for help  
session at Lunch in the Library**



# Important Dates

**Thurs. Feb. 16 @ 11:45am**

**Course Selection Marketplace in cafeteria**

**Thurs. Feb. 16 @ 4pm**

**Course Selection: 1<sup>st</sup> day to Submit**

**Thurs. Feb. 23 @ 4pm**

**Deadline for Submission of courses on  
[www.MyBlueprint.ca/TDSB](http://www.MyBlueprint.ca/TDSB)**

