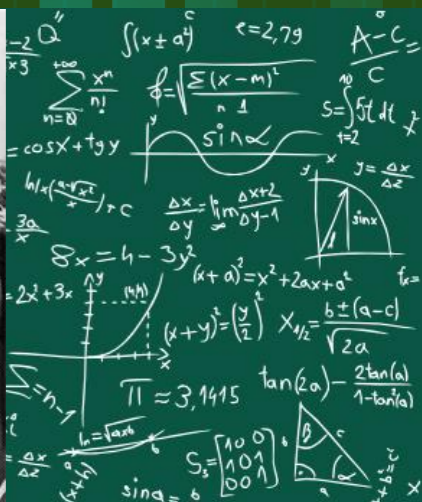
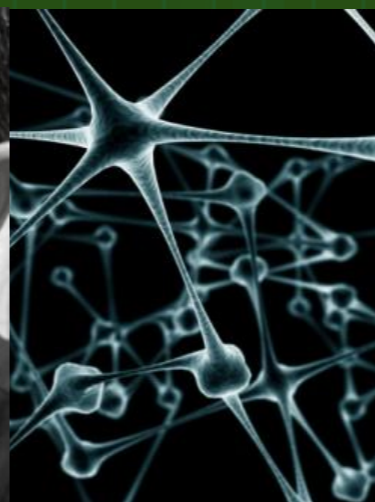


# 2024-2025 COURSE SELECTIONS

Gr. 9 + 12

Dr. Norman Bethune C. I.





Looking

**Ahead**



**IT**

**STARTS**

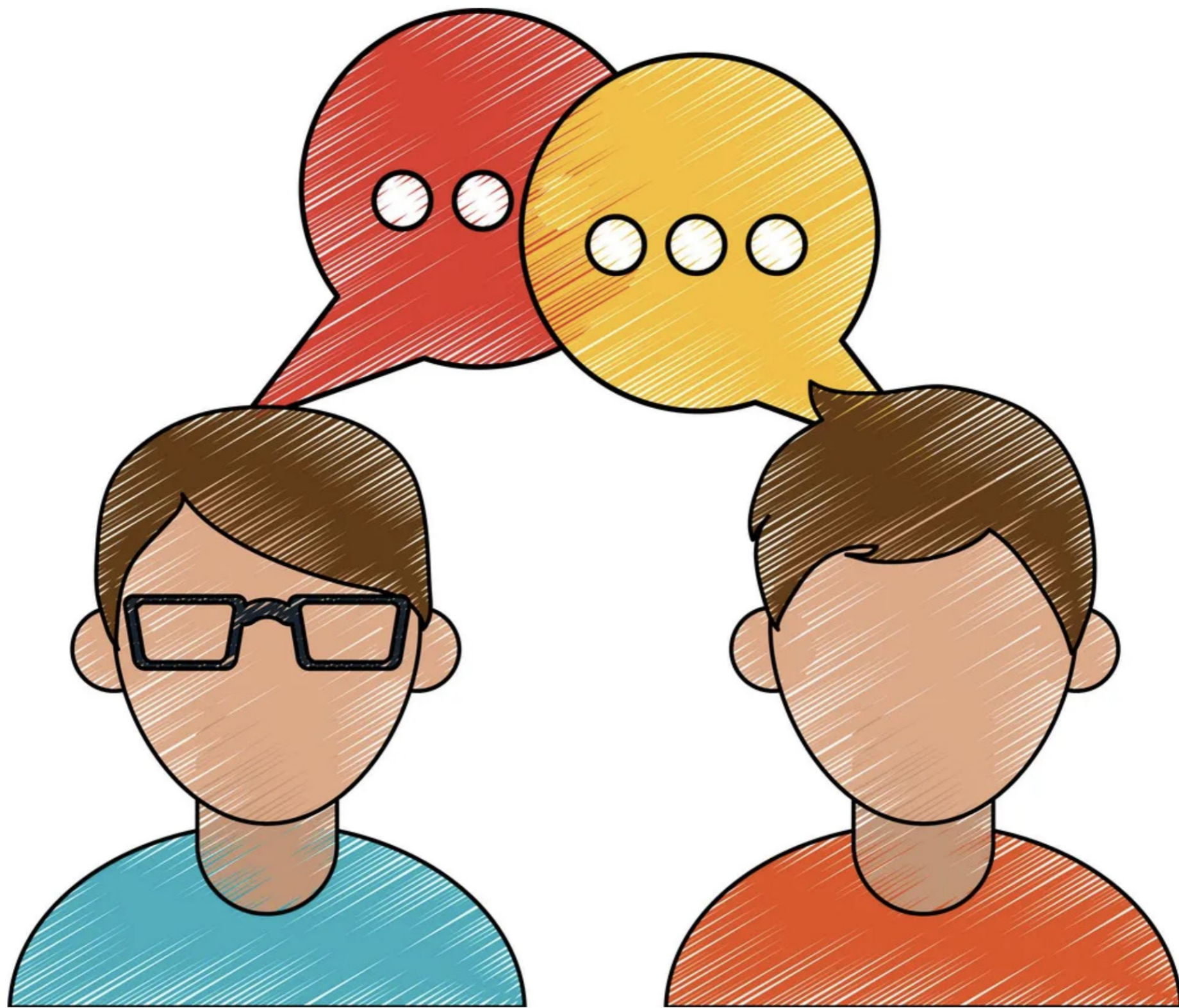
**WITH**

**YOU**



**Plan for YOU**

**OWN IT!**



**TALK about it**



**THINK about it**

THE TIME IS **NOW**



**Start NOW!!**





**Look for your passion**



**Find what fits you**

**Start with...**



**myBlueprint**

**[www.MyBlueprint.ca/TDSB](http://www.MyBlueprint.ca/TDSB)**



Home

Who Am I

High School

Post-Secondary

Work

Money

Guides

Favourites



# Who Am I

Surveys

Match Results

## Surveys

### Learning Styles

Do you remember what you read? Are you good at remembering  
Everyone has different styles of learning they like best. What are

Start Survey

### Personality

You are a unique individual; but we all have personality traits that  
similar to others. Understand your personality to find opportunit

# O.S.S.D.

- 40 hours of community involvement
- Literacy requirement
- 30 credits
  - 18 compulsory
  - 12 optional
- 2 Online e-Learning credits



# Online eLearning Credit Requirement

## Currently in Gr. 9

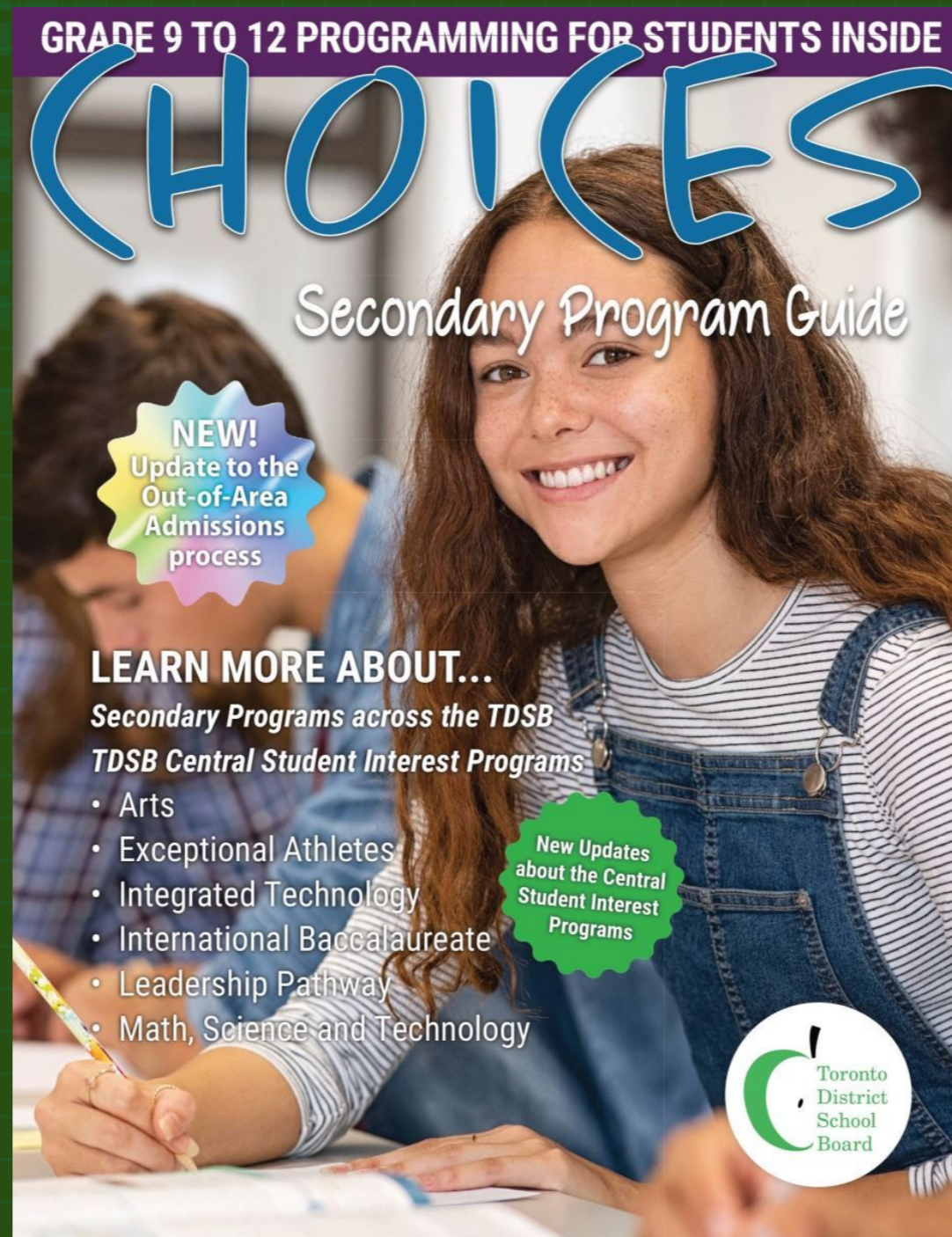
- 2 eLearning credits or Opt out

## Currently in Gr. 12

- 1 eLearning credit or Opt out

# TDSB Choices

## Secondary Program Guide



**How many courses  
do I to take?**

**Next year in Gr. 10**

**8 courses**



**How many courses  
do I to take?**

**Currently in Gr. 12**

**7 or 8 courses**

**or Not Returning**

**All students**

**must complete**

**Course Selections**

**That means you too**

**Grade 12s!!**

**Students not  
Returning**

**must indicate  
and submit on  
MyBlueprint.ca**

# Research Post-Secondary



myBlueprint

ONTARIO  
COLLEGES .CA™

[www.OntarioColleges.ca](http://www.OntarioColleges.ca)

The logo for Ontario Universities' Info features a stylized graphic of colored dots on the left, followed by the text "ONTARIO UNIVERSITIES' INFO". The word "ONTARIO" is in a light grey font, "UNIVERSITIES'" is in a medium grey font, and "INFO" is in a large, bold, maroon font.

ONTARIO  
UNIVERSITIES'  
INFO

[www.OntarioUniversitiesinfo.ca](http://www.OntarioUniversitiesinfo.ca)

[www.OYAPTDSB.com](http://www.OYAPTDSB.com)



[www.indeed.ca](http://www.indeed.ca)

The logo for Indeed, featuring a stylized white 'i' with a curved line above it, followed by the word 'indeed' in a lowercase, rounded sans-serif font.

The world's #1 job site.

[Upload your Resume](#)

Data based on total visits (as compiled by comScore, December 2014-March 2017)

[www.futurepreneur.ca](http://www.futurepreneur.ca)

futurepreneur  
canada™





# Important Dates

**Tues. Feb. 13 @ 11:45am**

Course Selection Marketplace in cafeteria

**Tues. Feb. 13 @ 4pm**

Course Selection opens

**Thurs. Feb. 15**

ESL Class Visits

**Feb. 20 - 22**

Extra help for [Myblueprint.ca](http://Myblueprint.ca)

**Thurs. Feb. 22 @ 4pm**

Deadline for Submitting courses online

**Submit it!**

**To Win it!**




**myBlueprint**

**Course selections done through**

**[www.MyBlueprint.ca/TDSB](http://www.MyBlueprint.ca/TDSB)**

Visit [www.myBlueprint.ca/TDSB](http://www.myBlueprint.ca/TDSB)

Log In Sign Up



Welcome Back

Username/Email


Username/Email


Password [Forgot Password?](#)

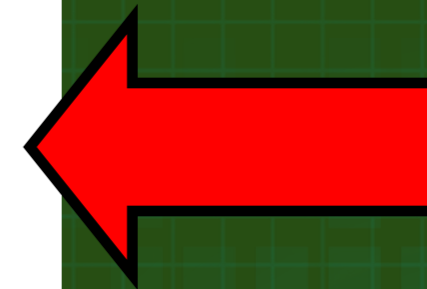
Password

Log In

or

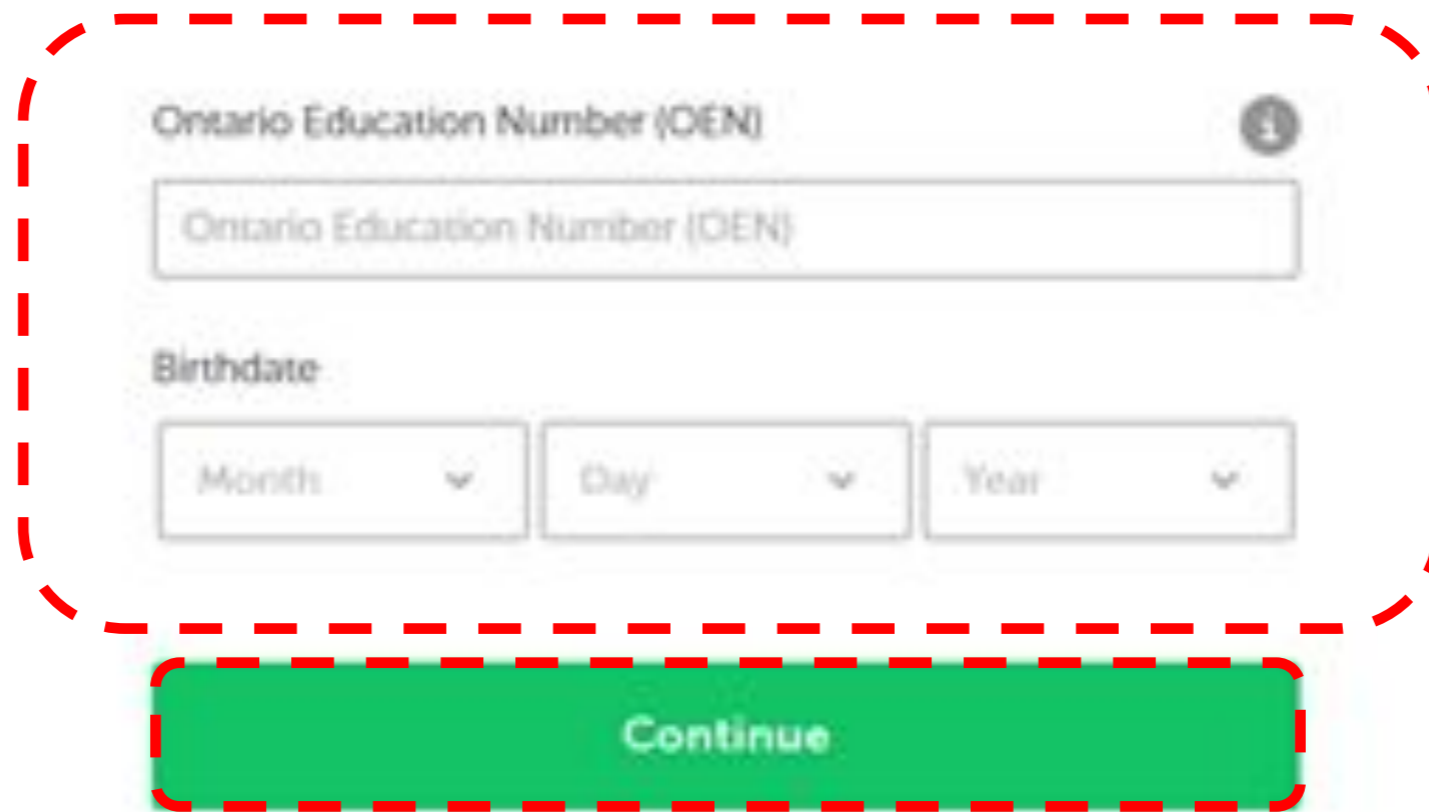
 School Account Login

 QR Code Login



Enter your E-Mail Address + Password

If you are new...  
enter your OEN & Birth Date



Ontario Education Number (OEN) ⓘ

Birthdate

Month ▼ Day ▼ Year ▼

Continue

# Click on **High School**

The screenshot shows a user interface for a high school planning tool. On the left is a dark blue sidebar with navigation options: Home, Who Am I, High School (highlighted with a red dashed box and a large red arrow pointing to it), Post-Secondary, Work, Money, Guides, and Favourites. The main content area is titled 'Official High School Plan' and includes a progress indicator with three steps: Step 1 Add Courses, Step 2 Review Courses, and Step 3 Submit Courses. A blue button labeled 'Review Course Selections' is positioned to the right of the progress steps. Below the progress indicator is a table with columns for Grade 9 (Current Year), Grade 10 (Next Year), Grade 11 (Plan Ahead), and Grade 12 (Plan Ahead). The table lists five courses for Grade 9 and their corresponding options for the subsequent years. A red error message at the top of the main area states 'Your courses are Not Submitted'.

Home

Who Am I

**High School**

Post-Secondary

Work

Money

Guides

Favourites

## High School

Plan Courses

### Official High School Plan

✖ Your courses are **Not Submitted**

**1** Step 1 Add Courses    **2** Step 2 Review Courses    **3** Step 3 Submit Courses    [Review Course Selections](#)

Grade 9 Current Year	Grade 10 Next Year	Grade 11 Plan Ahead	Grade 12 Plan Ahead
English (Academic) ENG1D1 • 1 Credit	<input type="radio"/> English	<input type="radio"/> English	<input type="radio"/> English
Mathematics MTH1W1 • 1 Credit	<input type="radio"/> Mathematics	<input type="radio"/> Mathematics	<input type="radio"/> Course
Science (Academic) SNC1D1 • 1 Credit	<input type="radio"/> Science	<input type="radio"/> Course	<input type="radio"/> Course
Core French (Academic) FSF1D1 • 1 Credit	<input type="radio"/> History	<input type="radio"/> Course	<input type="radio"/> Course
Issues in Canadian Geogra... COC1D1 • 1 Credit	<input type="radio"/> Civics/Careers	<input type="radio"/> Course	<input type="radio"/> Course


Graduation Requirements: 8/30 REQUIRED

8 Plans

SHSM P

Your school High School

# Official High School Plan

- 
- Home
- Who Am I
- High School
- Post-Secondary
- Work
- Money
- Guides
- Favourites

Student Account

Gr. 9

Abigail Villamin

## High School

Plan Courses

Official High School Plan

 Your courses are **Not Submitted**

**1** Step 1  
Add Courses

**2** Step 2  
Review Courses

**3** Step 3  
Submit Courses

Review Course Selections

Grade 9 Current Year	Grade 10 Next Year	Grade 11 Plan Ahead	Grade 12 Plan Ahead
English (Academic) ENG1D1 • 1 Credit	<input type="radio"/> English	<input type="radio"/> English	<input type="radio"/> English
Mathematics MTH1W1 • 1 Credit	<input type="radio"/> Mathematics	<input type="radio"/> Mathematics	<input type="radio"/> Course
Science (Academic) SNC1D1 • 1 Credit	<input type="radio"/> Science	<input type="radio"/> Course	<input type="radio"/> Course
Core French (Academic) FSF1D1 • 1 Credit	<input type="radio"/> History	<input type="radio"/> Course	<input type="radio"/> Course
Issues in Canadian Geogra... COC1D1 • 1 Credit	<input type="radio"/> Civics/Careers	<input type="radio"/> Course	<input type="radio"/> Course

Graduation Indicator

8/30

REQUIRED CREDITS

8  
Planned

0  
Earned

8  
Total

View Progress

SHSM Planner

Your school offers 1 Specialist  
High Skills Majors

Learn More

# Select "Not Returning next year?"

## High School

Plan Courses

Dr. Norman Bethune Collegiate Institute

[View Plans](#)

⊗ Your courses are **Not Submitted**

Not returning next year?

1 Step 1  
Add Courses

2 Step 2  
Review Courses

3 Step 3  
Submit Courses

Review Courses

Grade 9 Completed	Grade 10 Completed	Grade 11 Completed	Grade 12 Current Year
⊕ English	⊕ English	⊕ English	⊕ English
⊕ Mathematics	⊕ Mathematics	⊕ Mathematics	⊕ Course
⊕ Science	⊕ Science	⊕ Course	⊕ Course
⊕ Français	⊕ History	⊕ Course	⊕ Course
⊕ Geography	⊕ Civics/Careers	⊕ Course	⊕ Course

### Graduation Indicator

0/30

REQUIRED CREDITS

0  
Planned

0  
Earned

0  
Total

[View Progress](#)

### SHSM Planner

Your school offers 1 Specialist High Skills Majors

[Learn More](#)



# Click on + to Add a course


## High School

[Course Selection Resources](#)

[Plan](#) [Courses](#)

## Official High School Plan

[View Plans](#)

 Your courses are **Not Submitted**

**1** Step 1  
Add Courses

**2** Step 2  
Review Courses

**3** Step 3  
Submit Courses

[Review Course Selections](#)

### Graduation Indicator

8/30

REQUIRED CREDITS

8  
Planned

0  
Earned

8  
Total

[View Progress](#)

### SHSM Planner

Your school offers 1 Specialist  
High Skills Majors

[Learn More](#)

Grade 9 Current Year	Grade 10 Next Year	Grade 11 Plan Ahead	Grade 12 Plan Ahead
English (Academic) ENG1D1 • 1 Credit	<input type="radio"/> English	<input type="radio"/> English	<input type="radio"/> English
Mathematics MTH1W1 • 1 Credit	<input type="radio"/> Mathematics	<input type="radio"/> Mathematics	<input type="radio"/> Course
Science (Academic) SNC1D1 • 1 Credit	<input type="radio"/> Science	<input type="radio"/> Course	<input type="radio"/> Course
Core French (Academic) FSF1D1 • 1 Credit	<input type="radio"/> History	<input type="radio"/> Course	<input type="radio"/> Course
Issues in Canadian Geogra... COC1D1 • 1 Credit	<input type="radio"/> Civics/Careers	<input type="radio"/> Course	<input type="radio"/> Course

# Search and click on the course you want to add

The screenshot shows a web application interface for searching and adding courses. On the left is a dark blue sidebar with navigation icons and labels: Home, Who Am I, High School, Post-Secondary, Work, Money, Guides, and Favourites. The main content area has a dark header with a dropdown menu set to 'Dr. Norman Bethune Collegiate Institute'. Below this is a search bar with the placeholder text 'Search Courses...'. To the right of the search bar are two filter dropdowns: 'Grade' and 'English'. A red dashed box highlights the search bar and the 'English' filter. Below the filters, the text 'Filters' is visible. The main content area displays 'Displaying 8 Courses'. A list of courses is shown, each with a blue dropdown arrow and the word 'English'. The first course is 'English (Academic)' for Grade 9 (ENG1D1) with 1 credit, marked as 'Added' with a green checkmark. The second course is 'English' for Grade 10 (ENG2D1) with 1 credit. The third course is 'English' for Grade 10 (ENG2L1) with 1 credit. The fourth course is 'English' for Grade 11 (ENG3C1) with 1 credit, which is highlighted with a red dashed box. A large red arrow points from this box to the right. The fifth course is 'English' for Grade 11 (ENG3U1) with 1 credit. The sixth course is 'English' for Grade 12 (ENG4C1) with 1 credit. The seventh course is 'English' for Grade 12 (ENG4U1) with 1 credit. The eighth course is 'Ontario Secondary School Literacy Course' for Grade 12 (OLC4O1) with 1 credit.

Dr. Norman Bethune Collegiate Institute

Search Courses...

Filters

Grade

English

Displaying 8 Courses

English (Academic)  
Grade 9 • ENG1D1 • 1 Credit Added

English  
Grade 10 • ENG2D1 • 1 Credit

English  
Grade 10 • ENG2L1 • 1 Credit

English  
Grade 11 • ENG3C1 • 1 Credit

English  
Grade 11 • ENG3U1 • 1 Credit

English  
Grade 12 • ENG4C1 • 1 Credit

English  
Grade 12 • ENG4U1 • 1 Credit

Ontario Secondary School Literacy Course  
Grade 12 • OLC4O1 • 1 Credit

# Click on **View Progress**

### High School

#### Graduation Progress

8 Planned      0 Earned      30 Required

Compulsory 0/18 Credits

	Planned	Earned	Required
4 Credits in English (1 credit per grade)	1	0	1/4
1 Credit in French As a Second Language	1	0	1/1
3 Credits in Mathematics (at least 1 credit at the grade 11 or grade 12 level)	1	0	1/3
2 Credits in Science	1	0	1/2
1 Credit in Arts	1	0	1/1
1 Credit in Health and Physical Education	1	0	1/1
0.5 Credit in Civics	0	0	0/0.5

[Course Selection Resources](#)

[View Plans](#)

#### Graduation Indicator

8/30  
REQUIRED CREDITS



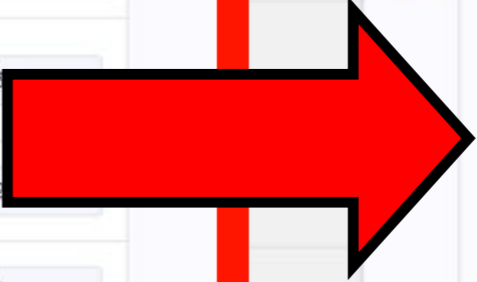
8 Planned      0 Earned      8 Total

[View Progress](#)

#### SHSM Planner

Your school offers 1 Specialist High Skills Majors

[Learn More](#)



# Review your selections + submit

! Review your course selections before submitting

Step 1 Add Courses   Step 2 Review Courses   Step 3 Submit Courses

**Submit Course Selections**

## Review Course Selections

<input checked="" type="checkbox"/>	ENG3U1 English	No Issues
<input checked="" type="checkbox"/>	MCR3U1 Functions	No Issues
<input checked="" type="checkbox"/>	SBI3U1 Biology	No Issues
<input checked="" type="checkbox"/>	SCH3U1 Chemistry	No Issues
<input checked="" type="checkbox"/>	AWS3M1 Visual Arts - Digital Media and Computers in the Arts	No Issues
<input checked="" type="checkbox"/>	EMS3O1 Media Studies	No Issues
<input checked="" type="checkbox"/>	HPC3O1 Raising Healthy Children	No Issues
<input checked="" type="checkbox"/>	CGF3M1 Forces of Nature: Physical Processes and Disasters	No Issues

Click **Submit Course Selections**

# Parent/Guardian Digital Verification

mail your parent/guardian so that they may confirm your selections

Step 1  
Add Courses

SS

Course selections h

Speak to your Cou

o High School

Send Approval E

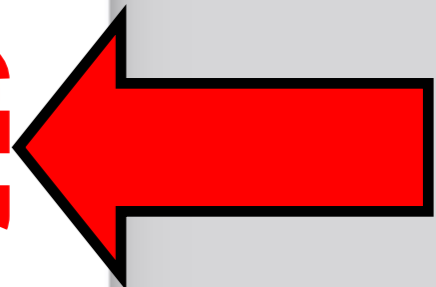


## Parent/Guardian Approval

Please add a parent or guardian email below for us to share your course selection.

Your parent/guardian will be asked to approve your course selections.

Parent/Guardian Email



Send Approval Email

# Not returning next year?

## High School

Plan Courses

Dr. Norman Bethune Collegiate Institute

View Plans

⊗ Your courses are **Not Submitted**

1 Step 1  
Add Courses

2 Step 2  
Review Courses

3 Step 3  
Submit Courses

Not returning next year?

Review Course Selections

Graduation Indicator

30/30

REQUIRED CREDITS



30  
Planned

0  
Earned

31  
Total

View Progress

SHSM Planner

Your school offers 1 Specialist  
High Skills Majors



Grade 9 Completed	Grade 10 Completed	Grade 11 Completed	Grade 12 Current Year
English, Grade 9 ENL1W1 • 1 Credit	English (Academic) ENG2D1 • 1 Credit	English: Understanding C... NBE3U1 • 1 Credit	English (University Prepar... ENG4U1 • 1 Credit
Mathematics MTH1W1 • 1 Credit	Principles of Mathematics ... MPM2D1 • 1 Credit	Functions and Application... MCF3M1 • 1 Credit	Mathematics of Data Man... MDM4U1 • 1 Credit
Science SNC1W1 • 1 Credit	Science (Academic) SNC2D1 • 1 Credit	Introduction to Computer... ICS3U1 • 1 Credit	Computer Science (Univer... ICS4U1 • 1 Credit
Core French (Academic) FSF1D1 • 1 Credit	Canadian History since W... CHC2D1 • 1 Credit	Financial Accounting Fun... BAF3M1 • 1 Credit	Financial Accounting Prin... BAT4M1 • 1 Credit
Exploring Canadian Geogr... CGC1W1 • 1 Credit	Civics and Citizenship + C... CIVCAR • 1 Credit	Music - Vocal/Choral AMV3M1 • 1 Credit	Music - Vocal/Choral AMV4M1 • 1 Credit

# Gr. 12s...

- Remember to submit Course Selections.
- Thanks for your attention.
- You can now return to your period 2 class.

# Course Information



# Courses to select for Gr. 10....

- English
- Math
- Science
- History
- Civcar (civics + careers)
- 3 x electives

# Summer SCHOOL



**Do not include summer school  
as a part of your course  
selection planning.**

# Prerequisites

**vs.**

# Strongly Recommended

# Business



**New!**

## Gr. 9 Building the

## Entrepreneurial Mindset

# BEM101

(replacing BTT101)

# Business



**New!**

Gr. 10 Launching and  
Leading a Business

**BEP201** (replacing BBI201)

A red starburst graphic with a jagged, multi-pointed border, containing the word "New!" in yellow text.

**New!**

# Technology

## Gr. 9 Technology and the Skilled Trades

# TAS101 (replacing TIJ101)



**New!**

# Technology

## Gr. 10 Technology and the Skilled Trades

# TAS201

(replacing TDJ201)

# Dance

## Grade 11 Dance

# ATC3M1



**New!**



# Instrumental Music

Repertoire Music (outside of  
school day)

To take AMR...

- you must be taking AMI (or AMV by teacher permission)
- AMR can be taken as a 9th course

# Science



**New!**

Gr. 10 Science,

ESL Sensitive

# SNC2D8

# ESL Sensitive Courses

- **ESL Sensitive courses offered**
- **These courses end with an “8”, CGC1W8**
- **Counsellors will visit ESL classes on Feb 15**

# Remember...



# Remember...



**Do course selections with  
parent(s) or guardian**

# Remember...



**Have questions?**

**Ask teachers and counsellors**

# Remember...



Help is  
available...

Feb 20,  
21, 22.

Counsellors are available for help  
session at Lunch in the Library

# Important Dates

**Tues. Feb. 13 @ 11:45am**

Course Selection Marketplace in cafeteria

**Tues. Feb. 13 @ 4pm**

Course Selection opens

**Thurs. Feb. 15**

ESL Class Visits

**Feb. 20 - 22**

Extra help for [Myblueprint.ca](http://Myblueprint.ca)

**Thurs. Feb. 22 @ 4pm**

Deadline for Submitting courses online



