

Givins/Shaw Jr PS Review

Public Meeting

May 8, 2018



Agenda

6:30 p.m. to 8:30 p.m.

1.	6:30 to 6:50 - Open House
2.	6:50 to 7:15 Presentation <ul style="list-style-type: none">• Setting the Context - Why are we here?• Program Area Review Process• Background Information, Enrolment Projections and Space Requirements• PART Preferred Option• Next Steps
3.	7:15 to 8:30 – Questions and Answers

Setting the Context – why are we here?

- The study was first identified in the Long-Term Program and Accommodation Strategy document in 2014
- Previous PART process (Spring 2016) resulted in a Board Decision, June 22, 2016:
“(b) That Givins/Shaw Junior Public School be reconfigured from a Junior Kindergarten to Grade 6 school to a Junior Kindergarten to Grade 5 school effective 1 September 2017 and that Grade 6 students from Givins/Shaw Junior Public School to go to Alexander Muir/Gladstone Avenue Junior and Senior Public School through to Grade 8 effective 1 September 2017.”
- The following study is the focus of this Program Area Review Team (PART) exercise:
 - Explore a review of the grade change at Givins-Shaw Jr. PS approved in June 2016 for implementation in September 2017, to determine if the transition from a JK-6 to a JK-5 is the most appropriate accommodation solution for this school at this time. **The implementation of the grade change will be deferred until this study is completed in the fall of 2017.**

TDSB Long-Term Program and Accommodation Strategy

Program Drivers

- Program choice
- Equity
- Fair access to specialized program and schools
- Viability

Accommodation Drivers

- Good distribution of schools
- Minimal transitions
- Minimal use of portables
- Service integration
- Good utilization
- Distinct attendance areas
- Efficient use of space



Long-Term Program and Accommodation Strategy 2017-2026



Find What Inspires You

V3

Program Area Review Process (PART)

Central Accommodation Team (CAT) Project Launch
Studies in the LTPAS are approved by CAT to commence Local Feasibility Team work
September 2017

Staff Review Process
Local Feasibility Team (LFT)
Trustees, Superintendent, Principals and Planning Staff
October 2017 to April 2018

Public Review Process
Program Area Review Team (PART)
Trustees, Superintendent, Principals, School Representative, Design and Planning Staff Meetings and a Public Meeting
April to May 2018

TDSB Final Approval Process
Trustees, Superintendent and Executive Staff
Report considered by Central Accommodation Team
Report considered by Planning and Priorities – June 13, 2018
Report considered by Board – June 20, 2018

Step 1



Step 2



Step 3
(We are here)

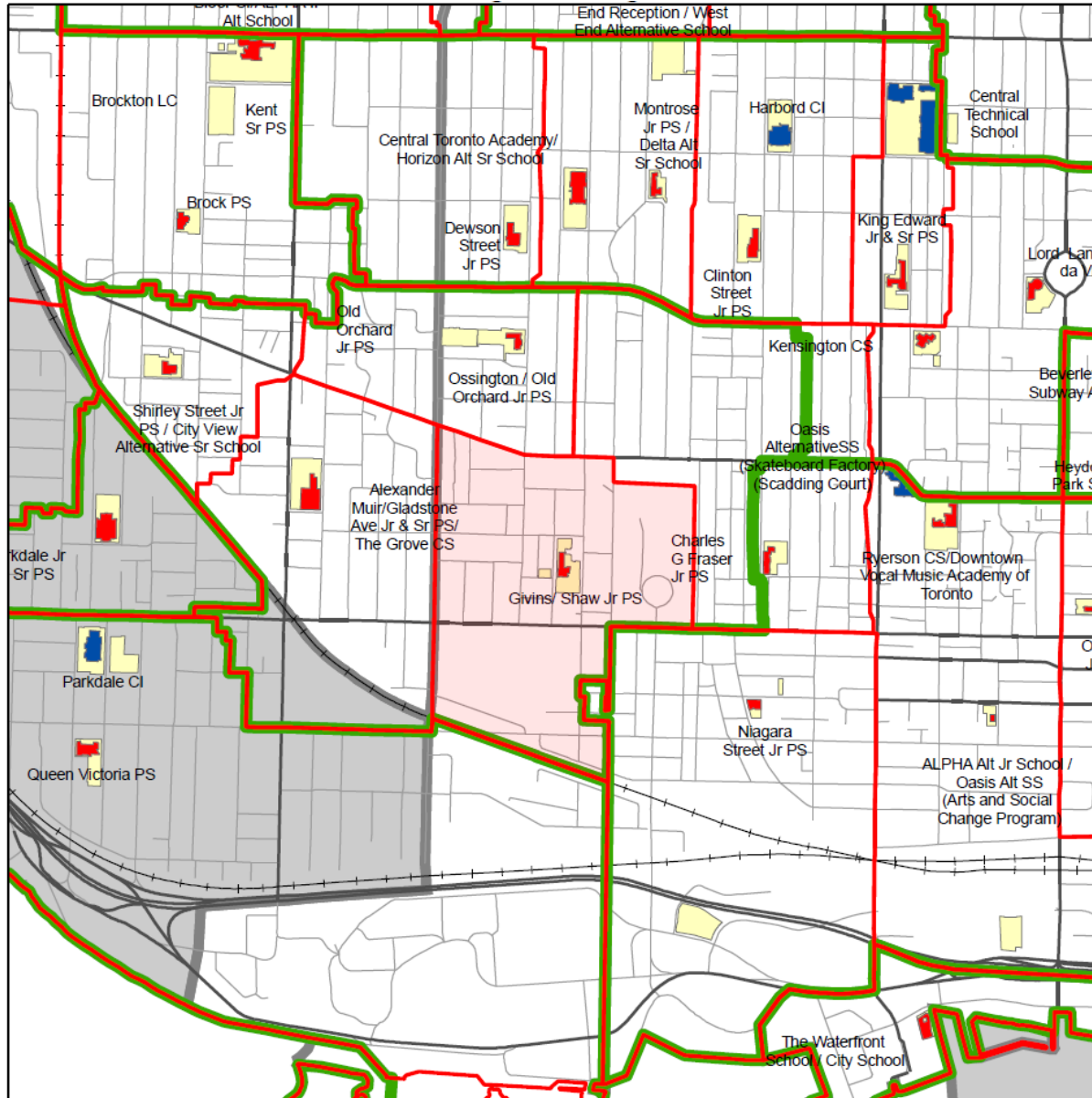


Step 4

Program Area Review Team Membership

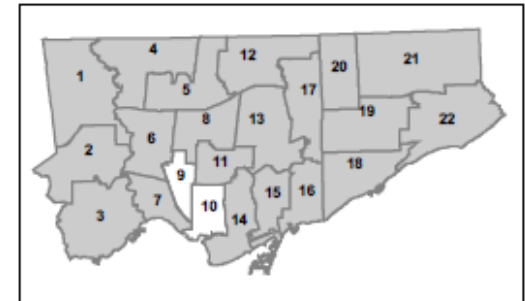
School/Organization	Name	Position
Givins/Shaw Junior Public School	Dan Taylor Dale McIntosh Kim MacFarlane Myfanwy Marshall	Principal Parent Representative Parent Representative Parent Representative
Learning Centre 4, Learning Network 25	Mike Gallagher	Superintendent
TDSB Ward 10	Ausma Malik	Trustee

Givins/Shaw Jr PS – Public Meeting

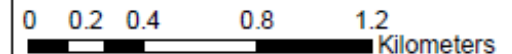


Legend:

- Junior Attendance Area
- Intermediate Attendance Area
- School Site
- Parks
- Elementary School
- Secondary School
- Road



Please note:
The lines on this map representing the Attendance Areas are approximate. For specific information on designated schools to serve individual addresses, please consult the TDSB Street Guide.



Produced by:
Planning Division, TDSB
March 2018
Source:
Base Map- Geospatial Competency Centre
Facility - Planning Division, TDSB
Data- City of Toronto



Projecting Enrolment for Individual Schools

Population

- Primarily births to 4 year olds as an indicator for projecting Junior Kindergarten

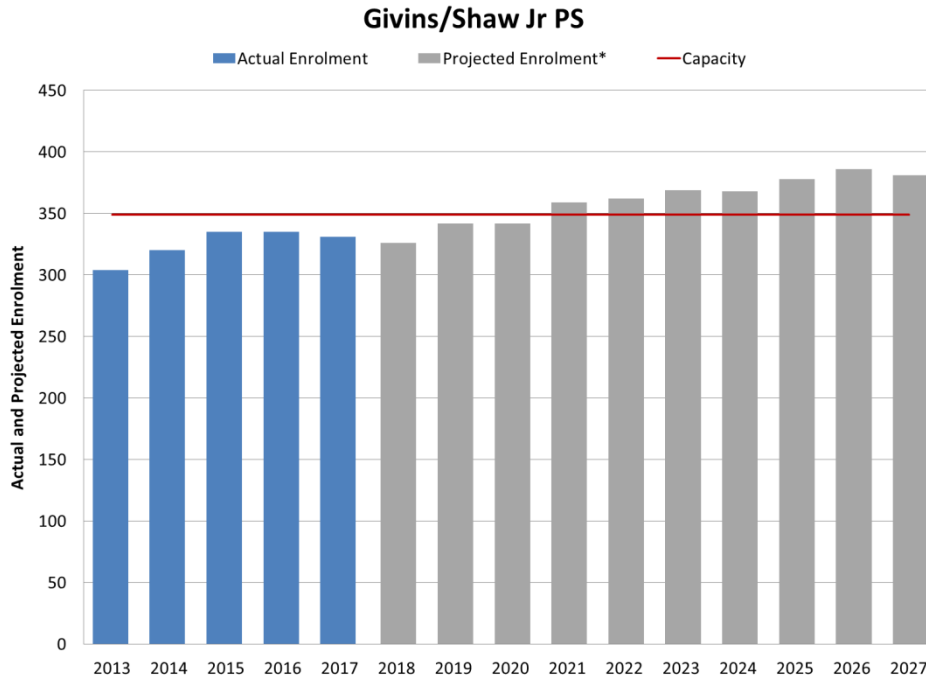
Transitions & Programs

- French – SK Immersion, Grade 4 and Grade 7 Extended
- Alternative Schools and Specialized Programs

Residential Development

- Currently for Givins/Shaw Jr PS there are 3 Active Developments, totalling 251 condominium units

Current Situation – Givins/Shaw Jr PS



Givins/Shaw Jr PS
 JK-Grade 6 (deferred grade range change)

Site Size: 3.42 acres

Current School Capacity: 349

2017/18 Enrolment (Oct 31st): 331

Current Building Utilization: 95%

2017/18 Optional Attendance Status: Closed

Existing Permanent Classroom Spaces: 17

	2018	2019	2020	2021	2022	2023	2024	2025	2026	2027
Enrolment	326	342	342	359	362	369	368	378	386	381
Utilization	93%	98%	98%	103%	104%	106%	105%	108%	111%	109%
Classroom Surplus/ Deficit	0	-1	-1	-2	-2	-2	-2	-2	-2	-2

Givins/Shaw Jr PS

With Grade 6 (PART recommendation)

	2018	2019	2020	2021	2022	2023	2024	2025	2026	2027
Enrolment	326	342	342	359	362	369	368	378	386	381
Utilization	93%	98%	98%	103%	104%	106%	105%	108%	111%	109%
Classroom Deficit	0	-1	-1	-2	-2	-2	-2	-2	-2	-2

Without Grade 6

	2018	2019	2020	2021	2022	2023	2024	2025	2026	2027
Enrolment	326	298	313	315	324	322	332	341	336	338
Utilization	93%	85%	90%	90%	93%	92%	95%	98%	96%	97%
Classroom Deficit	0	0	0	0	0	-1	0	-1	0	0

Capacity and Instructional Space

Room Type	Ministry Rated Capacity (Pupil Places)		# of rooms at Givins/Shaw Jr PS		Capacity
Classrooms (>700 sqft)					
• Purpose-built kindergarten room (>800 sqft)	26	x	2	=	52
• Kindergarten room >700 sqft	23	x	1	=	23
• Regular classroom	23	x	11	=	253
• Special education class	9	x	1	=	9
• Specialty withdrawal space (1 per school)	0	x	1	=	0
• Child Care (exclusive use)	0	x	1	=	0
Classroom subtotal			17		
Resource Room (>400 but <700 sqft)	12	x	1	=	12
Total					349

PART preferred JK to Grade 6 option

- Transitions

- Aligns with transition of other schools into Alexander Muir/Gladstone
 - All other feeder schools enter for grade 7
- Recent pathway decisions/program choices of students graduating from Givins/Shaw
 - Late Entry (grade 7) Extended French and Alternative schools

- Likely Potential for Portables

- Location options on the Givins/Shaw site
- TDSB perspective on the use of portables
 - Roughly a quarter of TDSB elementary schools have one or more portables on site
 - Long-Term Program and Accommodation Strategy (LTPAS) driver:
 - “Minimal Use of Portables - Minimize the use of portables (three is acceptable if space allows)”

Opportunity for Feedback

1. QR Code:



2. Online survey link: <https://goo.gl/forms/AwXY94CvFROxLTsy2>

- Deadline to submit online comments/feedback: **Friday, May 11, 2018 at 5:00pm**

3. Hard copy Community Feedback Surveys are available here

The Information provided at this meeting will be available on the TDSB website:

www.tdsb.on.ca/accommodationreviews

- Click on Givins/Shaw Jr PS under the “Program Area Reviews” Section

Next Steps

Program Area Review Team (PART) to review and consider feedback from this evening.

- Next working meeting: **May 15, 2018**

Program Area Review Team (PART) to develop a set of recommendations and a report.

Program Area Review Team (PART) submits report summarizing recommendations to Central Accommodation Team (CAT).

Prior to the Board meeting, there will be opportunity for public to depute at the Planning & Priorities Committee.

- Target Date: **June 13, 2018**

Recommendation are considered by the Board of Trustees at the Regular Board meeting for final decision

- Target Date: **June 20, 2018**

Planning and Priorities Committee Meeting

In addition to the feedback provided today there is also the opportunity to make a delegation to the:

Planning & Priorities Committee – **June 13, 2018**

Members of the public can make a delegation to this Committee.
(Instructions and Forms are available here tonight)

More information about the process can be found by the sign-in sheets.

Please ensure that you have included an email address with the sign-in sheet so that we can continue to follow up with you as more information becomes available.



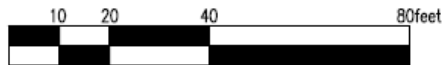
Questions



Givins/Shaw Jr. PS
 Room Uses and Capacity
 July 2017

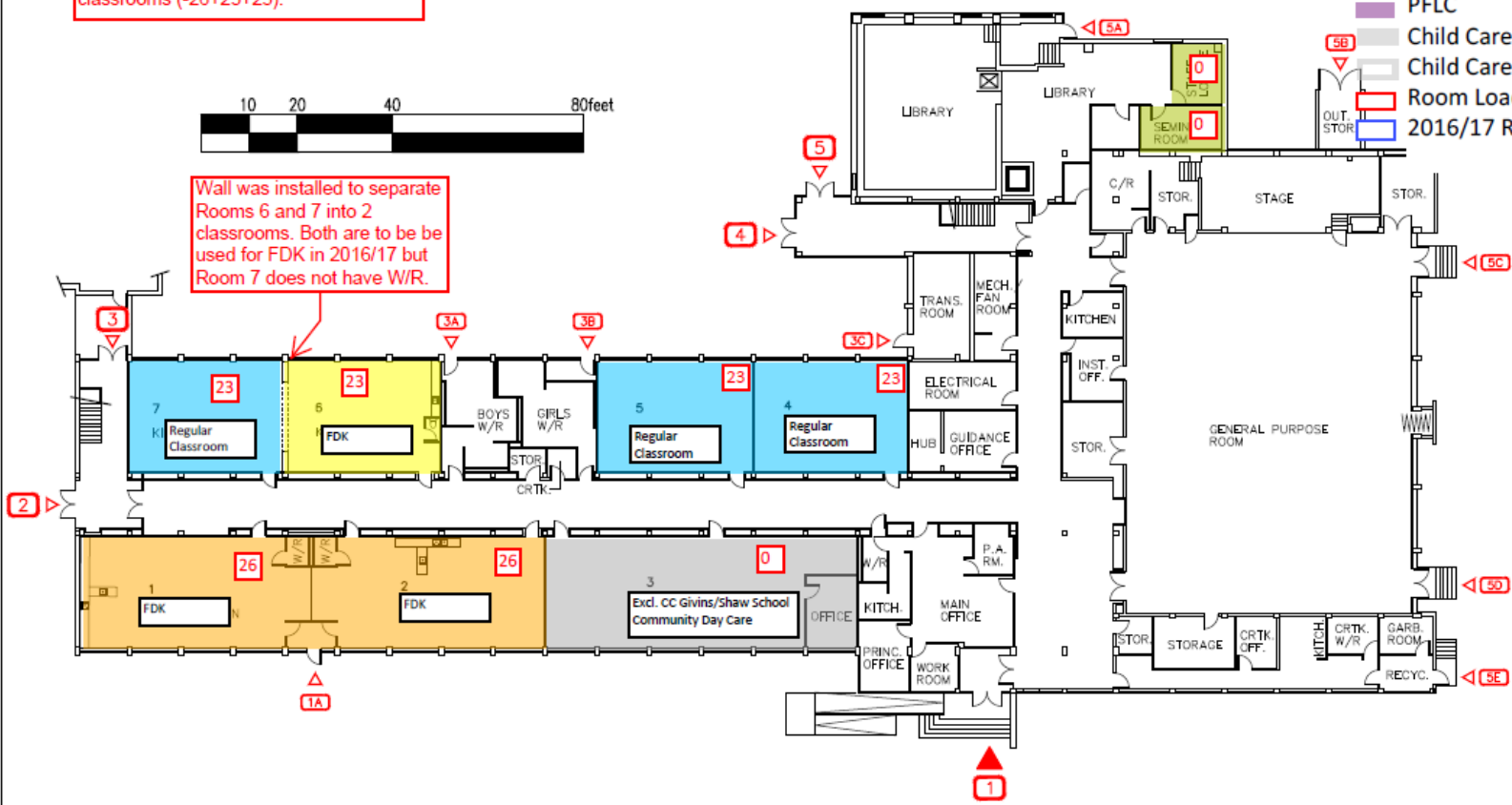
Capacity (pupil places):
 First floor = 144
 Second Floor = 205
 Total = 349

Revised capacity from 329 to 349 as room 6/7 was divided into two classrooms (-26+23+23).



Wall was installed to separate Rooms 6 and 7 into 2 classrooms. Both are to be used for FDK in 2016/17 but Room 7 does not have W/R.

- Legend:
- Kindergarten 900+ sq ft
 - Kindergarten 800-900 sq ft
 - Regular Classroom 700+ sq ft
 - Special Education Classroom
 - Specialty Classroom
 - Resource Room 400-700 sq ft
 - Seminar Room <400 sq ft
 - Section 23
 - PFLC
 - Child Care Exclusive Use
 - Child Care Shared Use
 - Room Loading
 - 2016/17 Room Use



North Arrow

Facility Services

Toronto District School Board

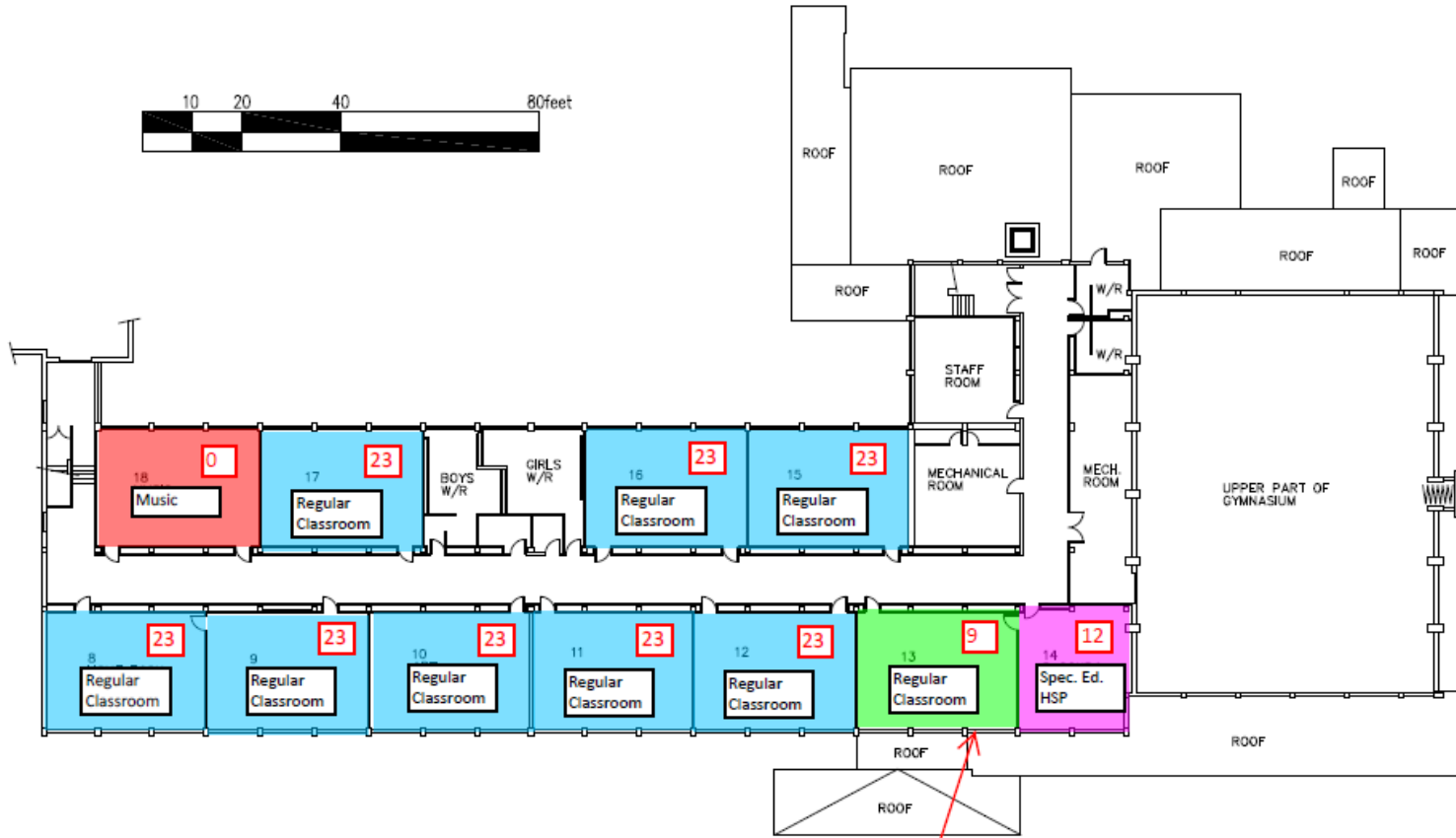
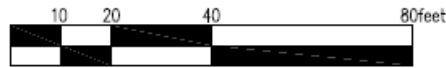
Technical Services Division
 Design & Construction Unit
 15 Oakburn Court, Toronto, Ontario M2N 1T5
 T: 416-395-4083 F: 416-395-9734

Facility
Givins/Shaw Jr. PS

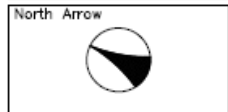
Address
 49 Givins Street
 Toronto

Sheet Title
 1st. Floor

Facility # 0772	Last Update 15-07-16
--------------------	-------------------------



Loaded at 9 in lieu of HSP running in resource-sized space (room 14)



Facility Services



Toronto District School Board

Technical Services Division
Design & Construction Unit
15 Oakburn Cres. Toronto, Ontario M2N 2T5
L 416-395-4588 / T 416-395-9734

Facility
Glvins/Shaw Jr. PS

Address
49 Glvins Street
M6J2X5
Toronto

Sheet Title
2nd Floor

Facility # 0772	Last Update 09-10-30
--------------------	-------------------------