

# Texthelp – Home Use Read&Write Installation for Windows 7 & 8



We are excited to announce that all students, teachers and administrators in the TDSB now have access to the full suite of Read&Write tools in Chrome, Windows and Edge. Read&Write can also be used with Mac, IOS and Android devices.

Follow the steps below to install the Read&Write for Windows (CA English) onto your Windows 7 and/or Windows 8 computer.

1. Double click on the **Google Chrome Icon**.



2. In the **address bar type:**

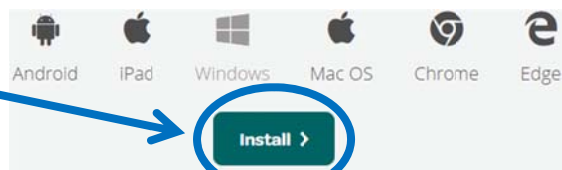


3. On the Read&Write webpage, Select **Try Now**



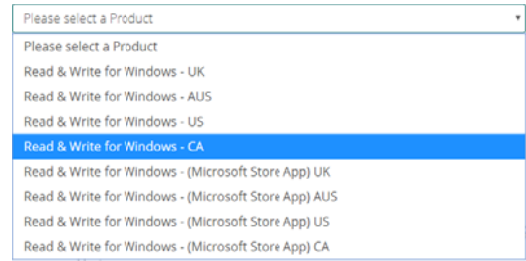
4. Locate and Select **Windows**,

Click **Install**



5. Select your product,

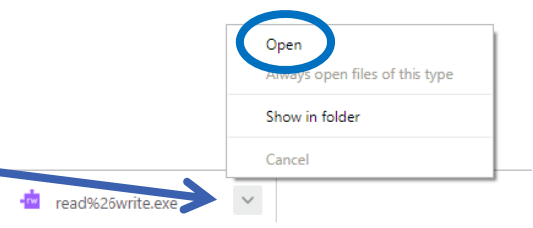
 **Read & Write for Windows - CA**




**Note:** The download will appear in the lower left hand corner of your internet browser window. It may take some time to download the file, be patient.



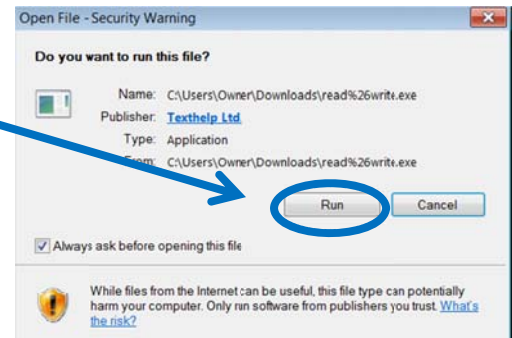
6. Once the download is complete, select the **chevron** to **expand the menu** and choose **Open**



7. Select **Run**, installation should begin automatically.

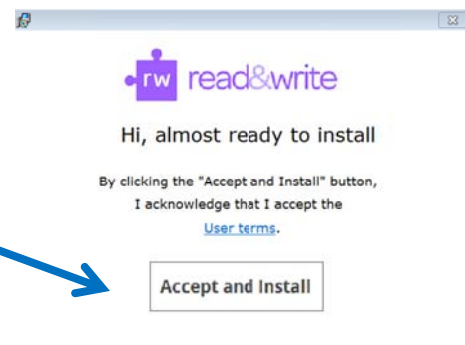
 If prompted, **Do you want the following program to make changes to your computer?**

 **Click Yes**



8. Before the installation can complete, you must accept the user terms.

 **Select Accept and Install**



9. Locate and double click the **Read&Write Icon** located on your desktop.

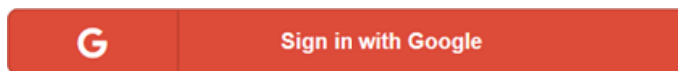


10. Click the Show/Hide RW tab in the upper right hand corner.

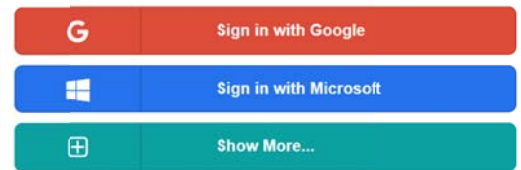


✚ This will take you to the sign in page.

11. **Sign in with Google** to complete the authentication process.



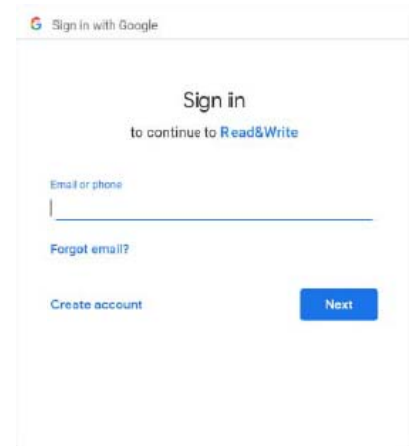
✚ To activate the full version of Read&Write, staff and students are required to sign into their TDSB Google account.



[Why do we need this?](#)

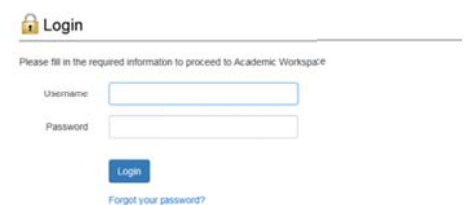
12. **Sign in with Google** using your **TDSB gmail account**. Select **Next**.

- ✚ **Student** - `firstname.lastname@student.tdsb.on.ca`
- ✚ **Staff** - `firstname.lastname@tdsb.on.ca`



13. **Sign in to Academic Workspace** using your **TDSB credentials**. Select **Login**

- ✚ **Student** – 9 digit **student #** and **password** used to log into TDSB computers and academic workspace.
- ✚ **Staff** – 6 digit **employee #** and **password** used to log into TDSB computers and academic workspace.



Thanks for signing in, you're all set to start using Read&Write!