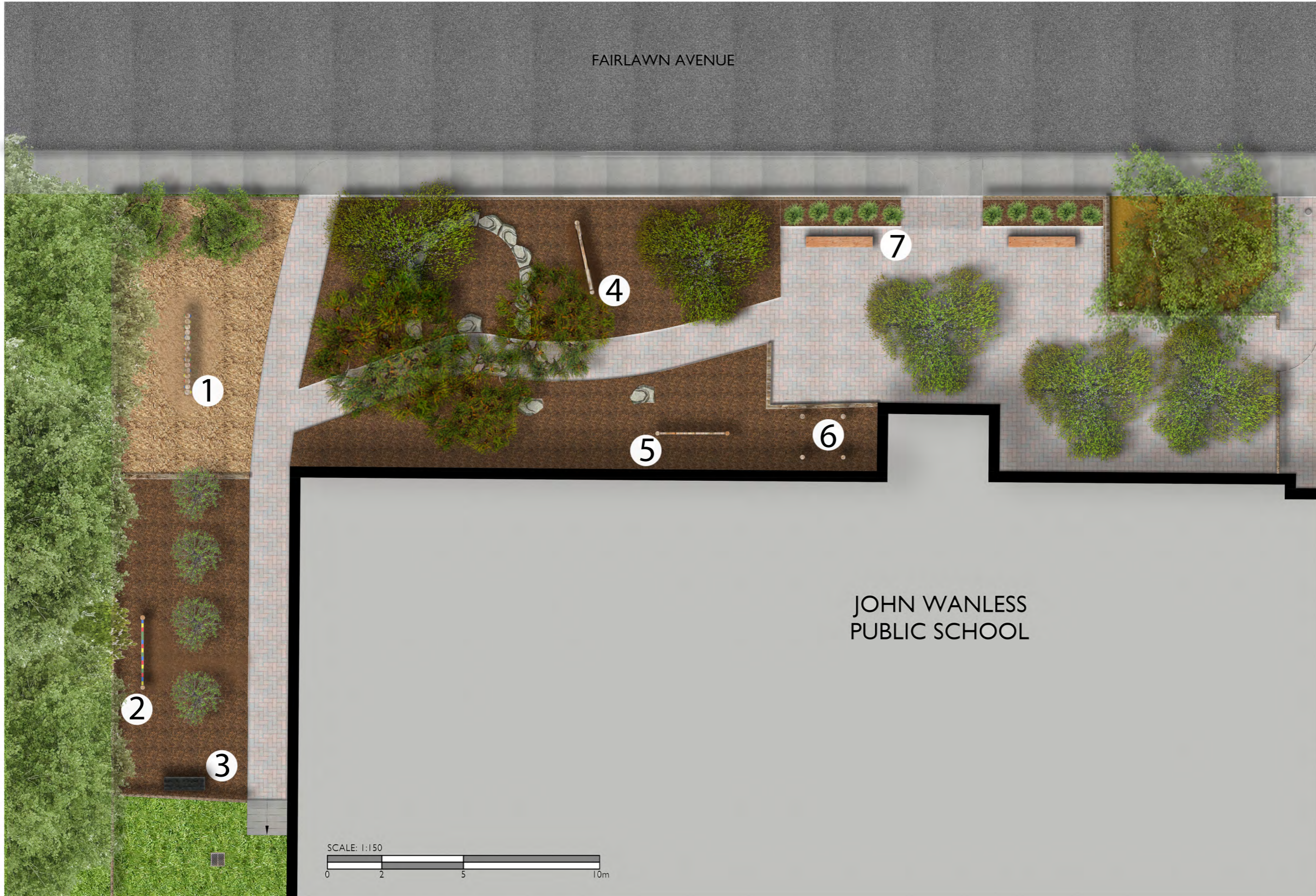


# JOHN WANLESS PUBLIC SCHOOL - RENDERED PLAN - AREA A

**PRELIMINARY DESIGN (NOT FOR CONSTRUCTION)**



**LEGEND**

1. Climbing Wall with Hand Grips
2. Music/ Sensory Wall
3. Job Box storage container
4. Chalk Wall
5. Water Wall/ Peg Board
6. Upright Posts for imaginative play and draping
7. Log Benches

NORTH

**KEY PLAN**

**FACILITY SERVICES**

TORONTO DISTRICT SCHOOL BOARD  
 PLANT OPERATIONS & SUSTAINABILITY  
 85 SHORTING RD.  
 TORONTO ON. M1S 5C5  
 T: 416-396-3485  
 F: 416-396-3447

**DRAWN BY:**  
 GAIL BORNSTEIN & DANIEL JOHNSON

DATE: FEBRUARY 2018  
 REVISION #: 2

FACILITY: JOHN WANLESS PUBLIC SCHOOL

ADDRESS: 245 FAIRLAWN AVE, TORONTO, ON  
 M5M 1T2

# JOHN WANLESS JPS - OUTDOOR FEATURES (AREA A)

FEBRUARY 2018



MUSIC/ SENSORY WALL



'JOB BOX' STORAGE CONTAINER



UPRIGHT POSTS FOR DRAPING



CHALK WALL



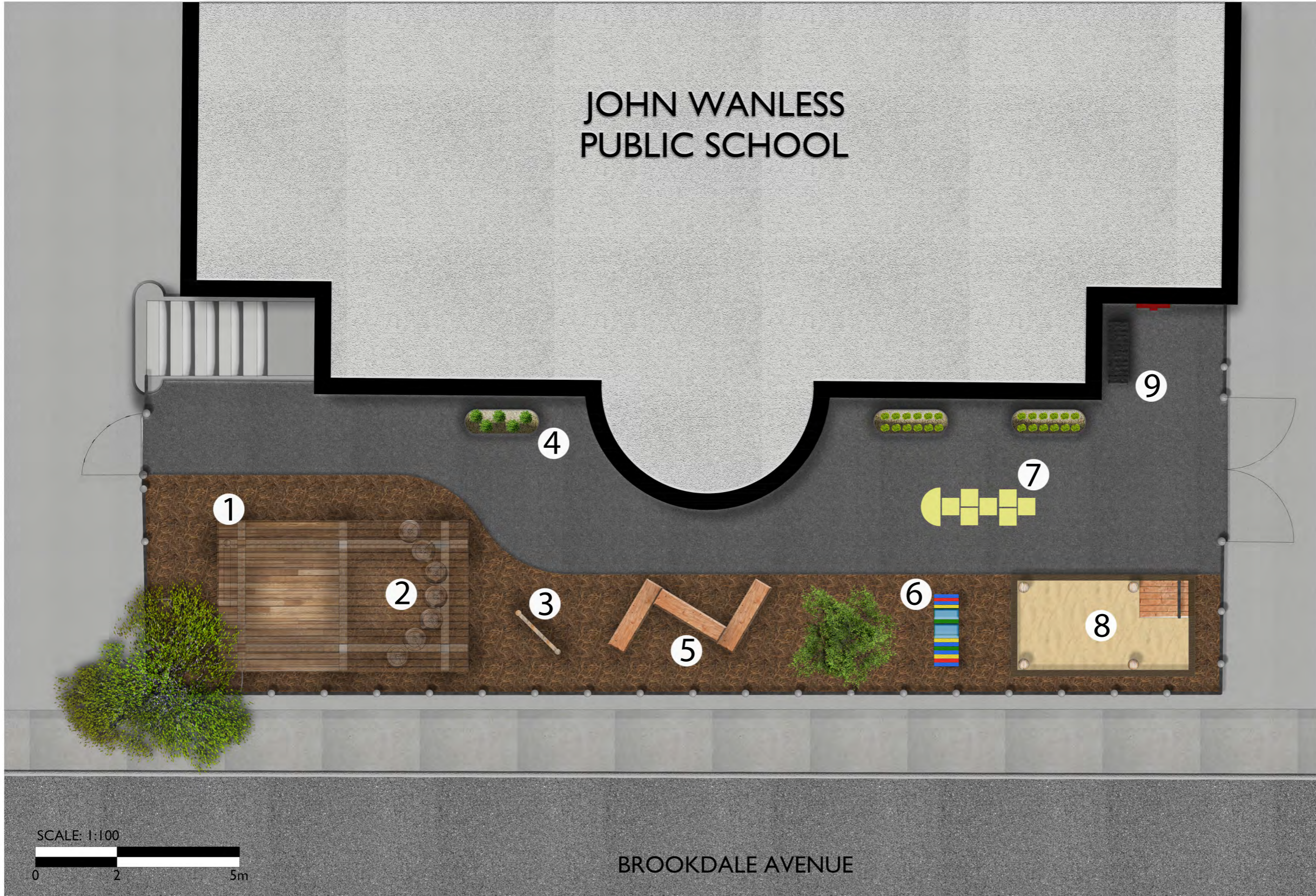
LOG BENCH SEATING



CLIMBING FEATURE (CONFIGURATION MAY VARY DEPENDING ON SITE CONDITIONS—SEE PLAN)


# JOHN WANLESS PUBLIC SCHOOL - RENDERED PLAN - AREA B

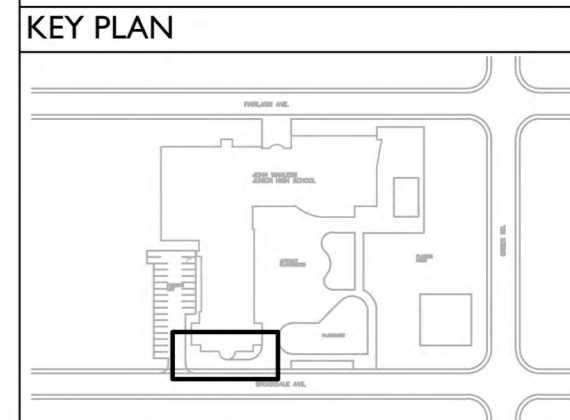
PRELIMINARY DESIGN (NOT FOR CONSTRUCTION)



**LEGEND**

1. Shade Structure with Stage and Chalk Wall
2. Stump Seating
3. Tempered Glass Art Wall
4. Stock Tank Planters
5. Log Bench Seating
6. Mud Kitchen/ Sensory Table
7. Asphalt Line Painting
8. Sand Play Area with Tall Posts
9. Job Box Storage

  
 NORTH



**FACILITY SERVICES**



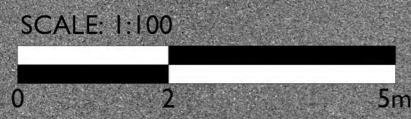
TORONTO DISTRICT SCHOOL BOARD  
 PLANT OPERATIONS & SUSTAINABILITY  
 85 SHORTING RD.  
 TORONTO ON. M1S 5C5  
 T: 416-396-3485  
 F: 416-396-3447

**DRAWN BY:**  
 GAIL BORNSTEIN & DANIEL JOHNSON

DATE: FEBRUARY 2018  
 REVISION #: 2

FACILITY: JOHN WANLESS PUBLIC SCHOOL

ADDRESS: 245 FAIRLAWN AVE, TORONTO, ON  
 M5M 1T2



BROOKDALE AVENUE

# JOHN WANLESS JPS - OUTDOOR FEATURES (AREA B)

FEBRUARY 2018



SAND BOX WITH TALL POSTS FOR DRAPING



SHADE STRUCTURE WITH CHALK WALL AND SEATING



TEMPERED GLASS ART WALL



'ZIG ZAG' LOGS



MUD KITCHEN/ SENSORY TABLE



STOCK TANK PLANTERS