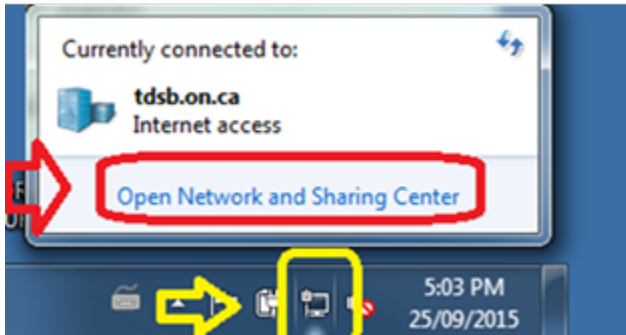
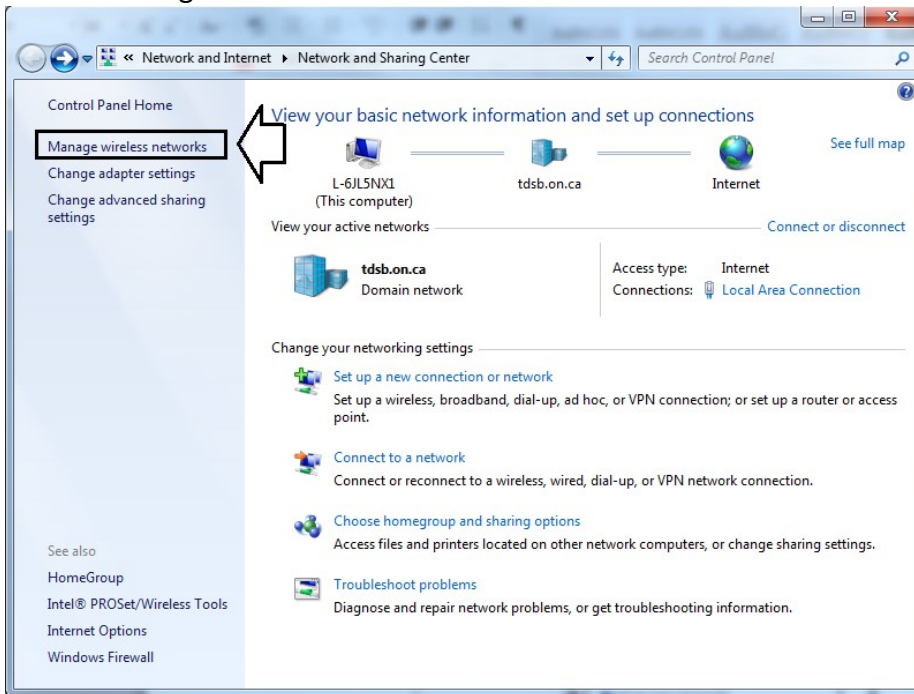


# TDSB-WIFI: WINDOWS 7 DEVICES

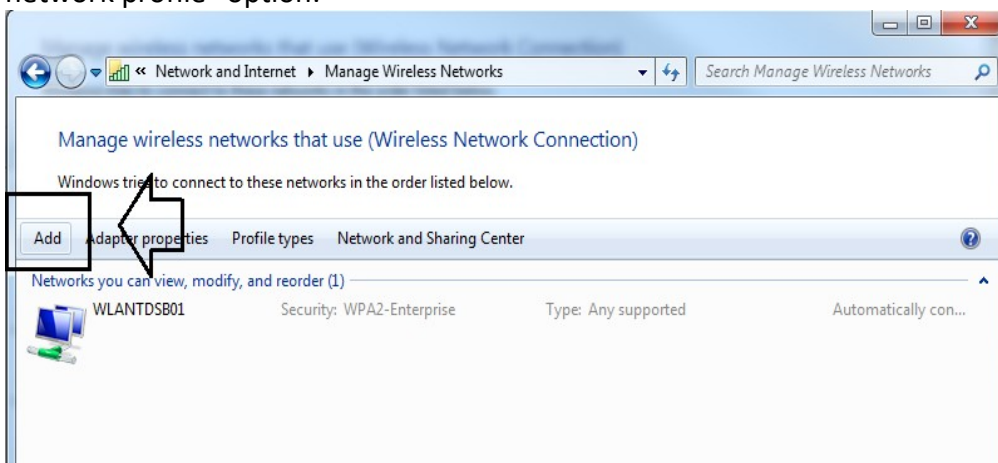
1. On the bottom right side of your screen, click on the computer or Wi-Fi icon and select the “Open Network and Sharing Center” option.



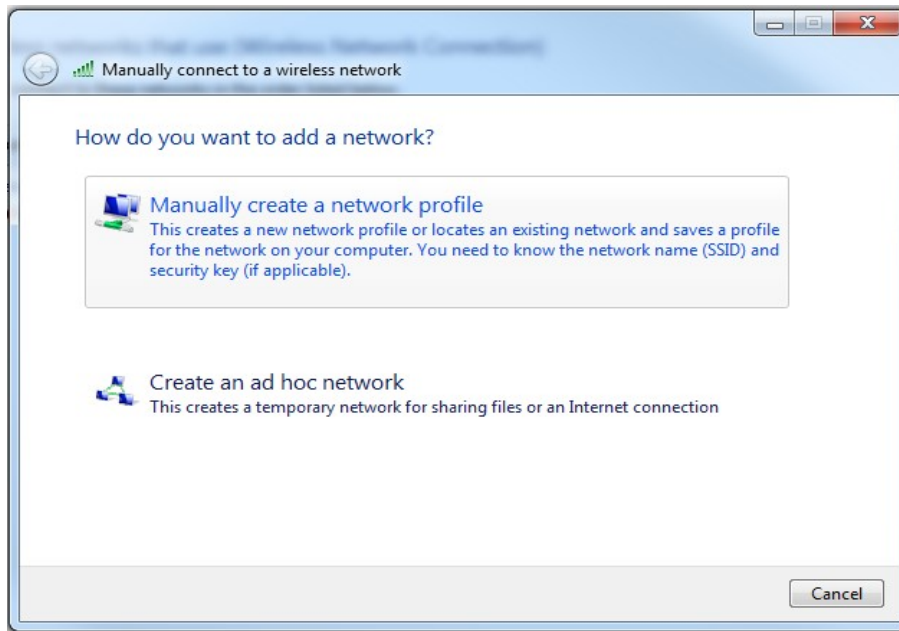
2. Select “Manage wireless networks” from the left side menu.



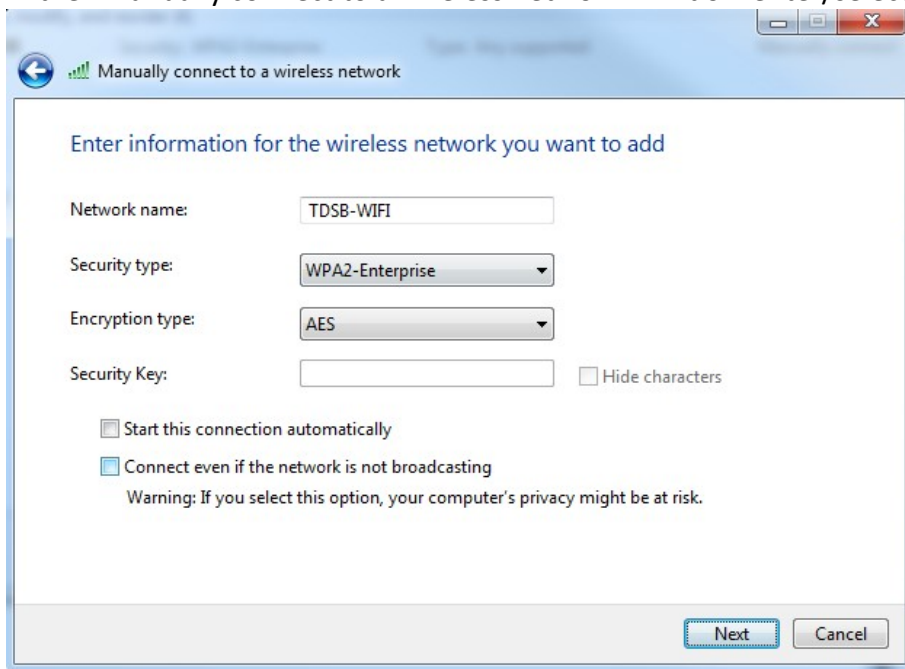
3. In the “Manage wireless networks” window select the “Add” option and then select the “Manually create a network profile” option.



# TDSB-WIFI: WINDOWS 7 DEVICES



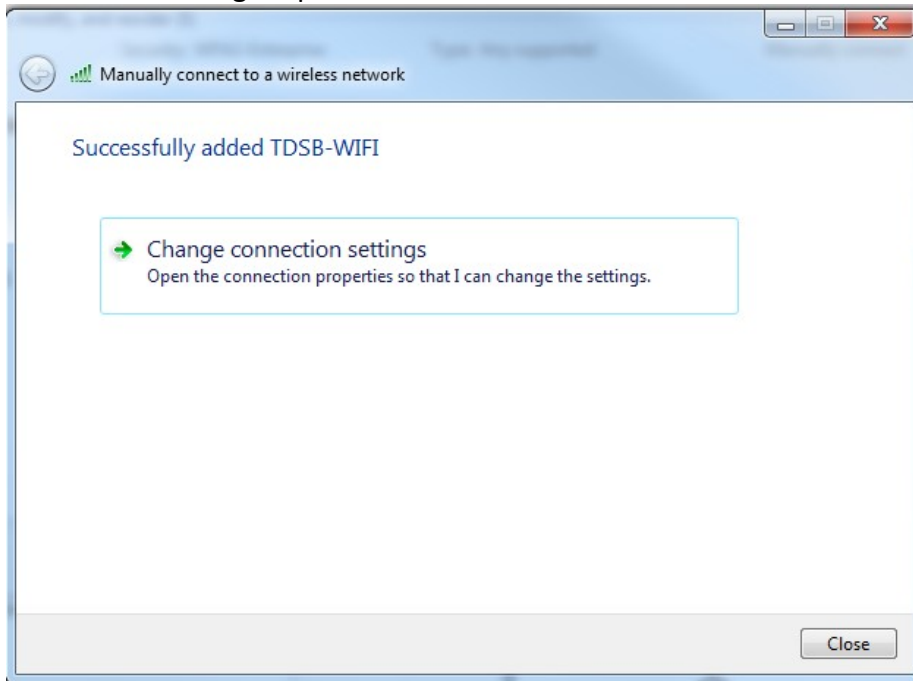
4. In the “Manually connect to a wireless network” window enter/select the following options:



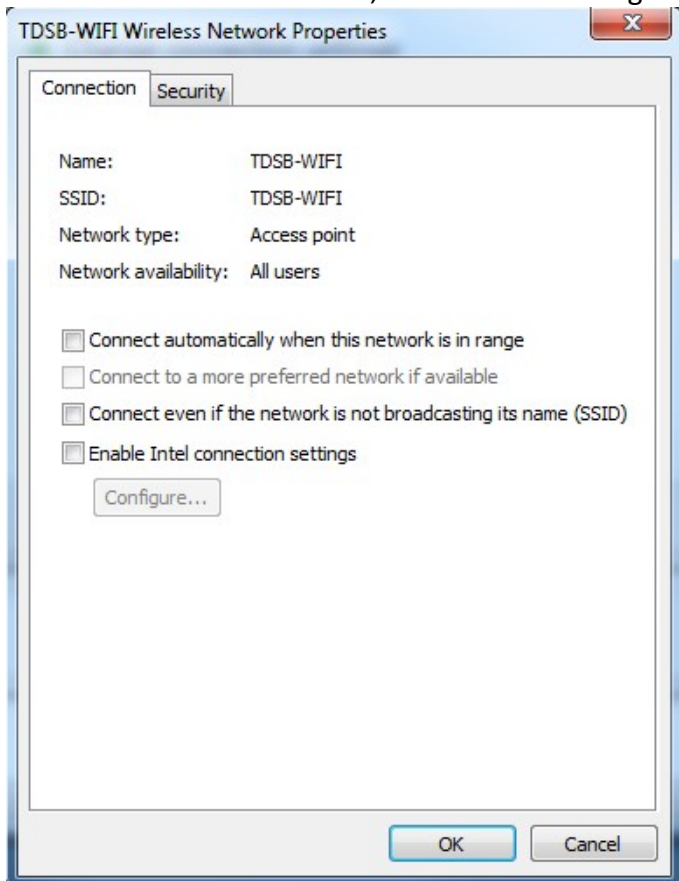
Select “Next” when you are done the above steps.

## TDSB-WIFI: WINDOWS 7 DEVICES

5. The TDSB-WIFI profile is now created but additional configuration is still required. Click on “Change connection settings” option.

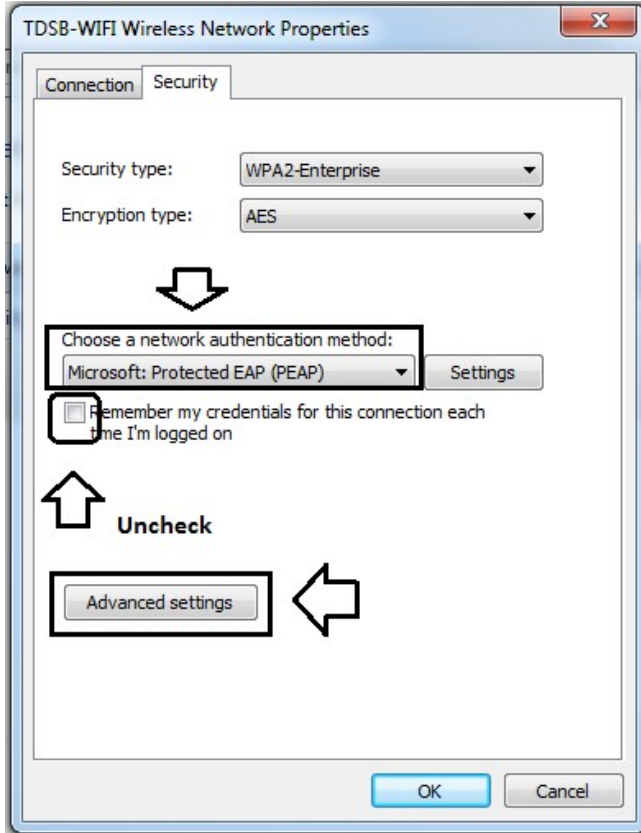


6. Under the “Connection” tab, ensure that nothing is selected as follows:

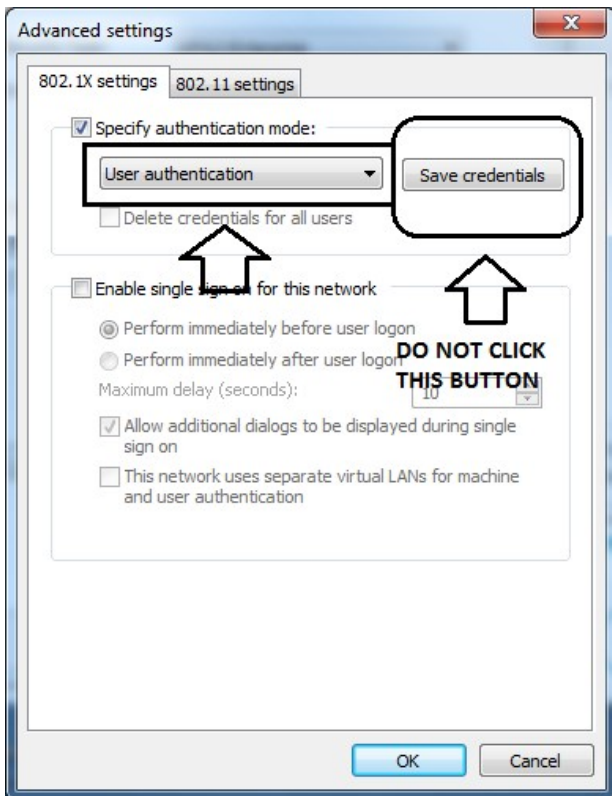


## TDSB-WIFI: WINDOWS 7 DEVICES

7. Under the “Security” tab, select the following options:

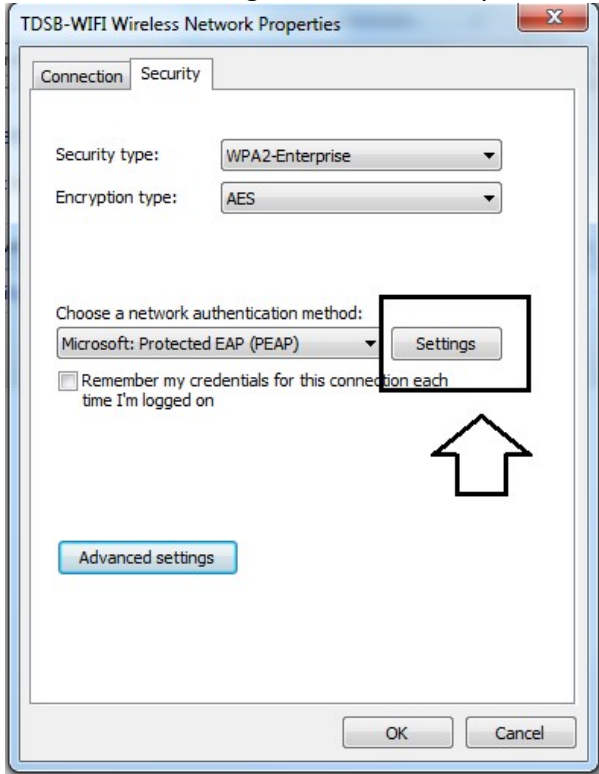


8. From the “Advanced settings” window, select the following settings under the “802.11X settings” tab and select “OK” when done:

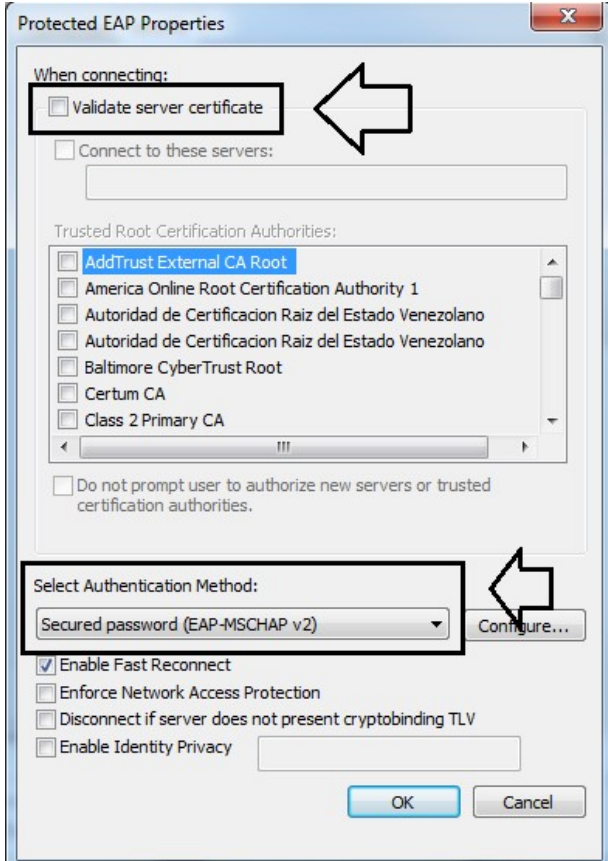


## TDSB-WIFI: WINDOWS 7 DEVICES

9. Now select “Settings” in the “Security” tab as follows:



10. From the “Protected EAP Properties” window, ensure that it looks as follows and then click “Configure”:

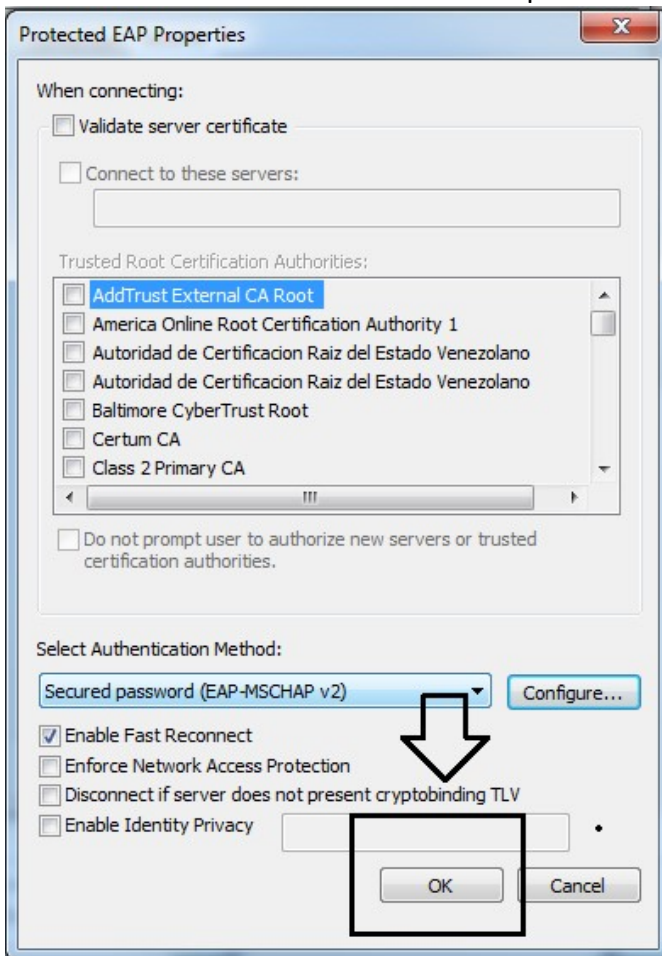


## TDSB-WIFI: WINDOWS 7 DEVICES

11. After pressing the “Configure” button, uncheck the “Automatically use my Windows logon name and password (and domain if any)” and click the “OK” button.

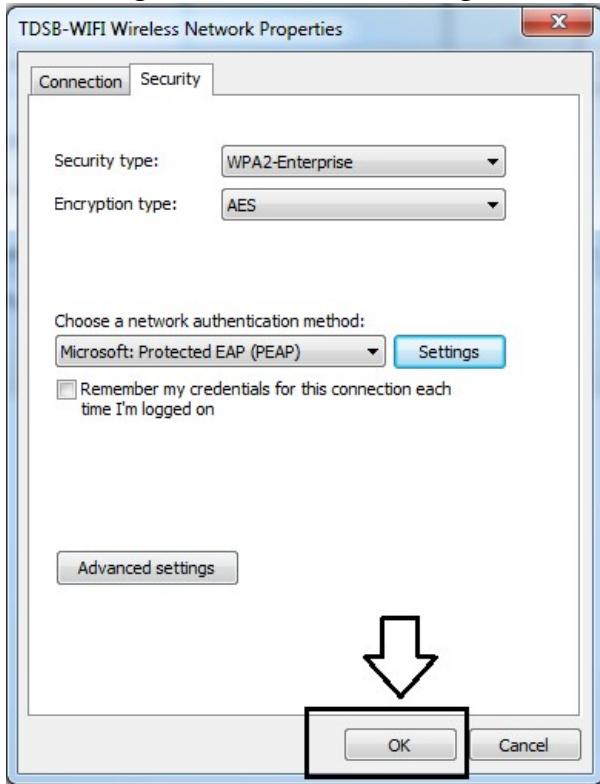


12. Click OK to close the “Protected EAP Properties” window.

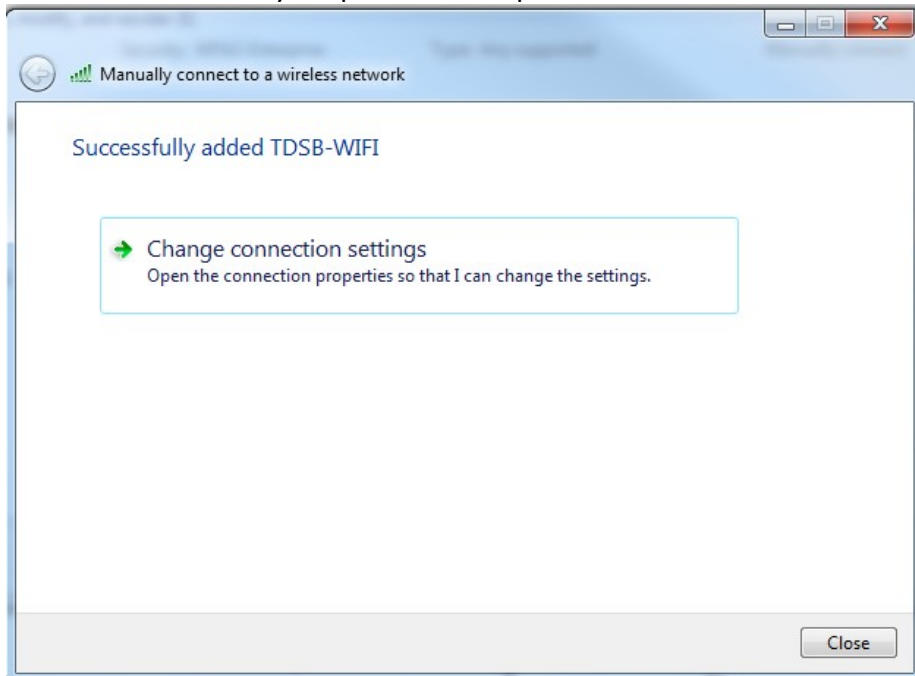


## TDSB-WIFI: WINDOWS 7 DEVICES

13. Click OK again to close the following window:

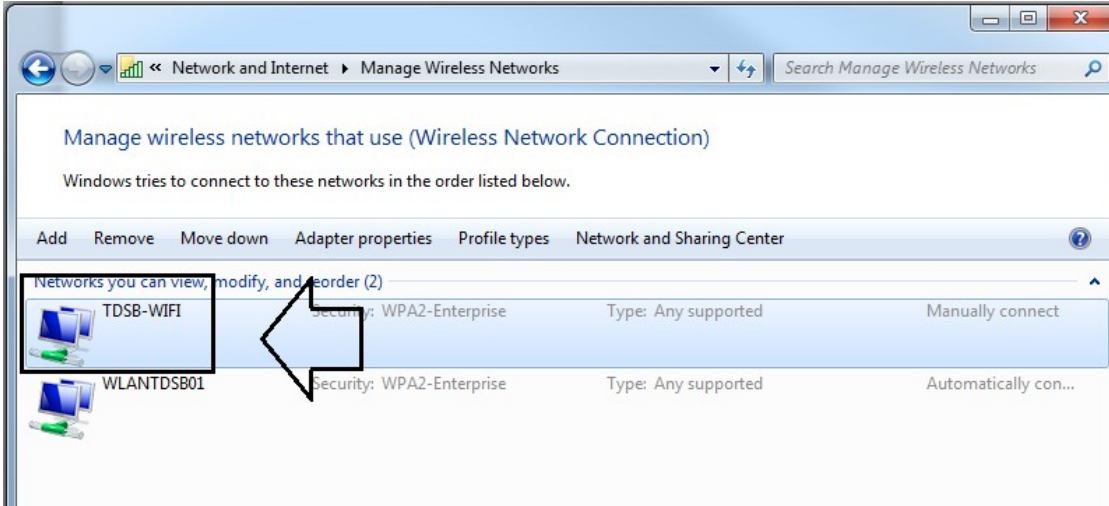


14. Click "Close" so that your profile is complete.



# TDSB-WIFI: WINDOWS 7 DEVICES

15. Your TDSB-WIFI profile is now ready to use.



16. Select the TDSB-WIFI network and connect to it like you normally would.



17. A login window is displayed to enter your TDSB network credentials. You should have internet access.

