



OUR HISTORY

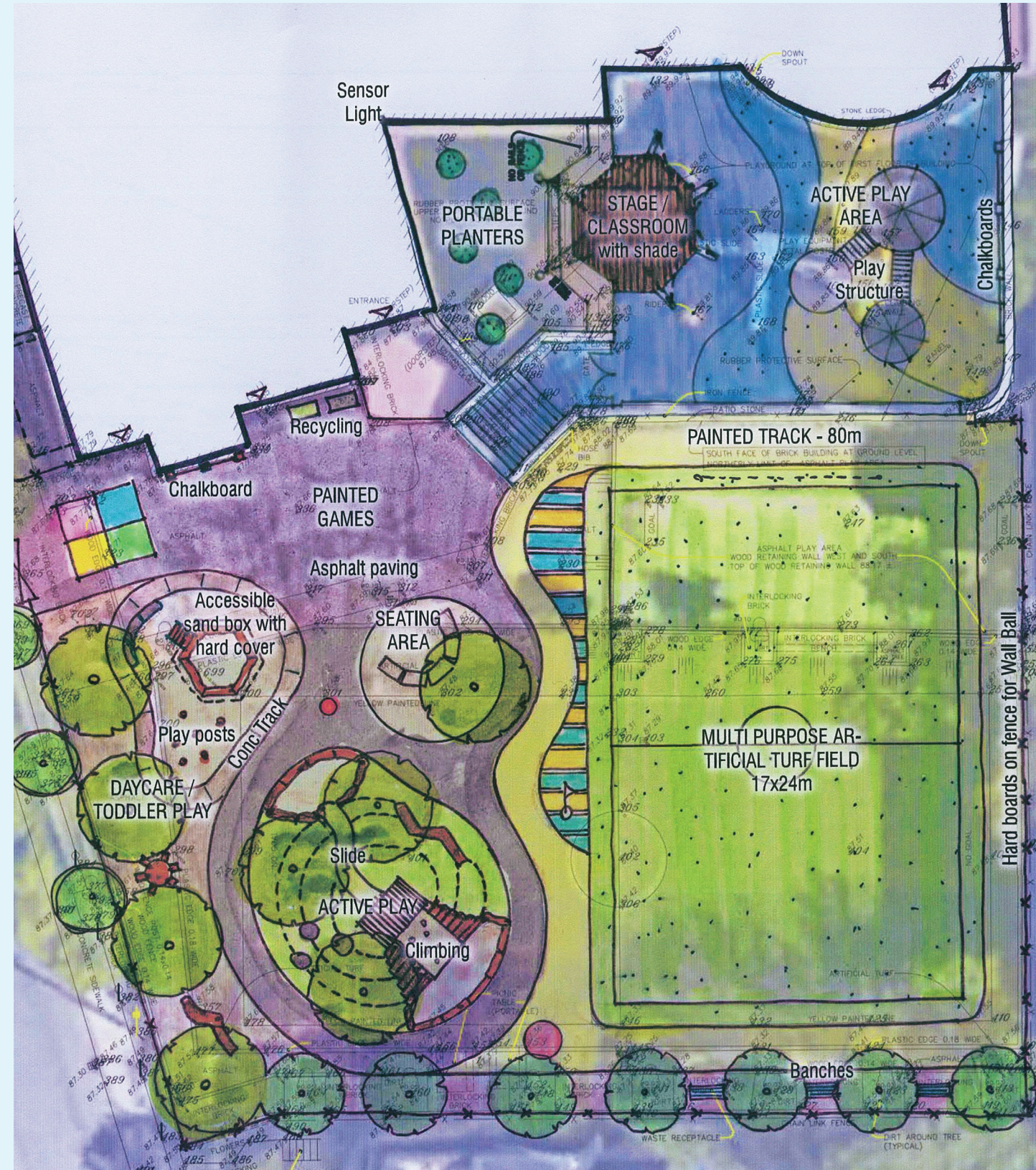
Niagara Street Junior Public School is located in one of Toronto's original communities. Established by Governor John Graves Simcoe in 1793, the predominantly working-class neighborhood is only a short walk away from Fort York.

The history of the school begins in 1874 when the original school house was built on the eastern edge of Garrison Common. The industrialization and local land use of the late 1800's greatly reduced the natural green space available for children's play and exploration.

Our current school yard is made of rubberized surfaces, concrete and artificial turf. The school is used by approximately 300 children - including preschoolers in the Garrison Creek Community Daycare, The Family Literacy Centre and students from JK to grade 6.



Get Involved • Donate Now • Leave a Legacy



THE NIAGARA OUTDOOR EXPERIENTIAL LEARNING SPACE FUND-RAISING CAMPAIGN

Welcome to the Niagara Outdoor Experiential Learning Space fund-raising campaign. Our goal is to raise **\$750k** to create a naturalized, dynamic school yard where students can be more creative in their learning and play.





THE IMPORTANCE OF PLAY

Play is one of the most important parts of a young student’s life. It is through play that children learn self-confidence, teamwork, socialization and a sense of accomplishment.

Outdoor activity promotes health and fitness while helping children develop a deeper connection with the planet. Experiential learning gives young minds a natural advantage in a rapidly growing urban environment.



THE PROJECT

Our goal is to raise **\$750k** for the two phases of project development ending in autumn 2019.

The Niagara Outdoor Experiential Learning Space, or NOELS, is a legacy project aimed at transforming a decades old urban school yard into an innovative and environmentally sustainable activity area.



BACKGROUND

In early 2015, Niagara Street Junior Public School began a consultation process with students, parents, the community and planners from the TDSB with respect to revitalizing the school yard.

Feedback from this early engagement resulted in requests to incorporate more natural surfaces as well as areas for enhanced interactive play, running, riding and climbing structures.

Integrating these types of play into a more naturalized school yard will promote student success and social development.



GET INVOLVED & DONATE NOW

The success of our project requires the support of individuals, corporations and benefactors.

A tax receipt will be issued to recognize your financial charitable donation. Visit our school website for more details and access to the online donation portal. Your contribution will benefit future generations.



*Timeline subject to change.