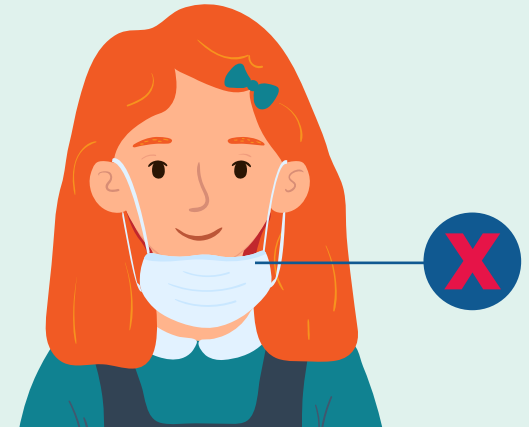
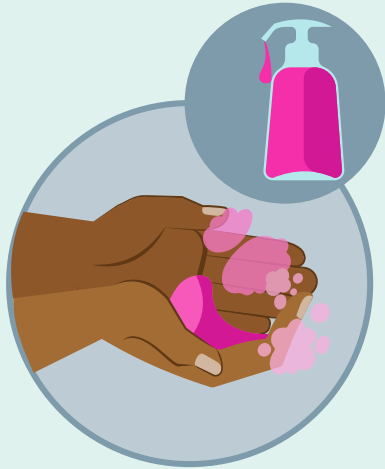


HOW TO WEAR A MASK OR FACE COVERING AT SCHOOL



1 Before putting on the mask, clean your hands with soap & water or an alcohol-based hand sanitizer.

2 Make sure the mask fits comfortably over your nose, mouth & chin so you can avoid adjusting it.

3 Do not leave the mask on your neck, forehead or dangling from your ear.



4 Remove your mask by the ear loops as soon as it gets wet or dirty. Avoid touching the outside of the mask.

5 Place the dirty mask in a bag and clean your hands again. Put on a new, clean mask.

6 Do not share your masks with classmates.