

Whitney Word

◦ Issue 2 | September 23 | ◦ 2016

Whitney Word Editor
Martha McClew
whitneyword@gmail.com

Whitney School Council Co-Chairs
Meric Koksai and Ashley Rutledge
whitneyschoolcouncil@gmail.com

Whitney Public School Principal
Debbie Stern
deborah.stern@tdsb.on.ca

school dates for **september**

- 26** Monday, 6:30pm, Gym
Whitney School Council Meeting
- 27** Tuesday, 9am
Terry Fox Run (raindate Sept 28)

Whitney's Terry Fox Run Page

Donate Online Here:



- 29** Thursday
Photo Day
- 29** Thursday 4pm-7pm
Harvest Fest @ Whitney Schoolyard

school dates for **october**

- 6** Thursday, 10:30am
SPA Day
- 7** Friday
PA Day
- 10** Monday
Thanksgiving—No School

from the principal

On THURSDAY OCTOBER 6th, immediately following morning recess @ 10:30 a.m., Whitney will hold its first SPA day of the year! Each month, we focus on a different TDSB building character theme where all students come together in an assembly forum to celebrate, show their spirit and recognize one another. This model is based on the belief that positive attention contributes to and reinforces a person's self-esteem. In the month of September, our character theme was RESPECT. So, over the past month, teachers discussed this theme in their classrooms, PA announcements were reflective and teachers were looking out for student actions that demonstrated respect both inside and outside of the classroom. On

Thursday October 6th, we will recognize those students who demonstrated respect during the month of September.



As well, our grade 5 students in Ms. Robinson's class will introduce our theme for October – RESPONSIBILITY. The spirit theme for this SPA day will be a blue Jays or

blue! You can either wear the blue jays logo or just wear blue! Come and celebrate a great baseball season and the possibility of being in a post season game by sporting your shirts, hats and anything else to show your love for baseball!! Parents are always welcome to join in on the fun and attend our assembly.

Debbie Stern

Want to report a student absence? Want to know when the deadline is? Need a copy of a field trip form?

Save yourself a call and program allison.walker@tdsb.on.ca in your smartphone and email Allison in the office for any of your Whitney School needs.



school hours

Morning Session	8:42 am
Morning Recess	10:05 – 10:20 am
Lunch	11:30 – 12:32 pm
Afternoon Session	12:35 pm
Afternoon Recess	1:55 – 2:10 pm
Dismissal	3:20 pm

school calendar 2016/17

The official school year calendar for the
Toronto District School Board runs from
September 6, 2016 to June 29, 2017, incl.

First day of classes for all students is
September 6, 2016

The last day of class for elementary students is
June 29, 2017.



Holidays & Professional Activity (PA) Days

Labour Day	September 5, 2016	PA Day	January 20, 2017
PA Day	October 7, 2016	PA Day	February 17, 2017
Thanksgiving	October 10, 2016	Family Day	February 20, 2017
PA Day	November 18, 2016	Mid-Winter Break	March 13 to 17, 2017 Inclusive
PA Day	December 2, 2016	Good Friday	April 14, 2017
Christmas Break	Dec 26-Jan 6, 2017, incl (last day of school: Dec 23; school resumes Jan 9)	Easter Monday	April 17, 2017
		Victoria Day	May 22, 2017
		PA Day	June 9, 2017
		PA Day	June 30, 2017

September						
S	M	T	W	Th	F	S
				1	2	3
4	5 H	6	7	8	9	10
11	12	13	14	15	16	17
18	19	20	21	22	23	24
25	26	27	28	29	30	
Respect						

October						
S	M	T	W	Th	F	S
						1
2	3	4	5	6	7 PA	8
9	10 H	11	12	13	14	15
16	17	18	19	20	21	22
23	24	25	26	27	28	29
30	31	Responsibility				

November						
S	M	T	W	Th	F	S
		1	2	3	4	5
6	7	8	9	10	11	12
13	14	15	16	17	18 PA	19
20	21	22	23	24	25	26
27	28	29	30			
Empathy						

December						
S	M	T	W	Th	F	S
				1	2 PA	3
4	5	6	7	8	9	10
11	12	13	14	15	16	17
18	19	20	21	22	23	24
25	26	27	28	29	30	31
Kindness & Caring						

January						
S	M	T	W	Th	F	S
1 H	2 B	3 B	4 B	5 B	6 B	7
8	9	10	11	12	13	14
15	16	17	18	19	20 PA	21
22	23	24	25	26	27	28
29	30	31				
Teamwork						

February						
S	M	T	W	Th	F	S
			1	2	3	4
5	6	7	8	9	10	11
12	13	14	15	16	17 PA	18
19	20 H	21	22	23	24	25
26	27	28				
Fairness						

March						
S	M	T	W	Th	F	S
			1	2	3	4
5	6	7	8	9	10	11
12	13 B	14 B	15 B	16 B	17 B	18
19	20	21	22	23	24	25
26	27	28	29	30	31	
Honesty						

April						
S	M	T	W	Th	F	S
						1
2	3	4	5	6	7	8
9	10	11	12	13	14 H	15
16	17 H	18	19	20	21	22
23	24	25	26	27	28	29
30						
Co-operation						

May						
S	M	T	W	Th	F	S
	1	2	3	4	5	6
7	8	9	10	11	12	13
14	15	16	17	18	19	20
21	22 H	23	24	25	26	27
28	29	30	31			
Integrity						

June						
S	M	T	W	Th	F	S
				1	2	3
4	5	6	7	8	9 PA	10
11	12	13	14	15	16	17
18	19	20	21	22	23	24
25	26	27	28	29	30 PA	
Perseverance						

Professional Activity Days:

Friday, October 7, 2016
Friday, November 18, 2016
Friday, December 2, 2016
Friday, January 20, 2017
Friday, February 17, 2017
Friday, June 9, 2017
Friday, June 30, 2017

First Day of School:

Tuesday, September 6, 2016
Last day of school for students:
June 29, 2017

Dates to Remember:

Labour Day: September 5, 2016
Thanksgiving: October 10, 2016
Christmas Break: December 26, 2016 to January 6, 2017 inclusive (last day of school December 23, 2016; school resumes January 9, 2017)
Provincial Family Day: February 20, 2017
Mid-Winter Break: March 13 to 17, 2017 (inclusive)
Good Friday: April 14, 2017
Easter Monday: April 17, 2017
Victoria Day: May 22, 2017

Total Instructional Days: 188

Whitney P.S Calendar Dates & Events

2016-2017



	First Day of School	Tuesday September 6
*	Welcome Assembly & Intro to SPA	Tuesday Sept. 6 & Friday Sept. 9
*	Curriculum Night	Thursday September 22
*	Terry Fox Run	Tuesday September 27
	P.A. Day	Friday October 7
	Thanksgiving (no school)	Monday October 10
	Remembrance Day Assembly	Friday November 11
	Progress Reports go home	Tuesday November 15
	P.A. Day for Parent/Teacher Interviews	Friday November 18
	Holiday Concert Dress Rehearsal	Thursday December 15 @ 9:00AM
	Holiday Concert Celebration	Thursday December 15 @ 7:00PM
	Winter Break Holidays	December 26 to Jan 6 (inclusive)
	P.A. Day	Friday January 20
	First Term Reports go home	Tuesday February 14
	P.A. Day for Parent/Teacher Interviews	Friday February 17
	Family Day	Monday February 20
	March Break	March 13 to March 17 (inclusive)
	Good Friday	Friday April 14
	Easter Monday	Monday April 17
*	Spring Event	Thursday April 20
	Victoria Day	Monday May 22
	P.A. Day	Friday June 9
	Final Reports go home	Tuesday June 27
	Gr. 6 Graduation	Tuesday June 27
*	Play Day & BBQ	Wednesday June 28
	Last Day of Classes	Thursday June 29
	P.A. Day	Friday June 30

Whitney School Council General Meeting

**Monday September 26
6:30-7:30pm in the Library**

We welcome the participation and input of all parents at every WSC meeting. A minimum of 20 parents is required for any vote to pass.

As part of the 2016/17 School Council's continuing effort to expand our communication reach, we respectfully request that all Class Parents attend General Meetings. Class Parents serve as a vital conduit of news and information for so many Whitney parents, new and old. We are confident that the attendance of a representative from every class in the school will benefit the parent community as a whole.

Meric Koksai and Ashley Rutledge
Co-Chairs, Whitney School Council
whitneyschoolcouncil@gmail.com

greetings
from the
school
council



WSC Executive Slate 2016-17

Co-Chairs

Meric Koksai & Ashley Rutledge

Co-Treasurer

Mistine Lauzon & Tracey Butler

Co-Secretaries

Alexis Wise & Ros Wilson

Whitney Word Editor:

Martha McClew

General Liaisons

Jill Spidle, Jane Vokes, Lisa Clark,
Andrew Pollock & Paul Pelton

Principal: Deborah Stern



WSC June 14 2016 Meeting Minutes



WSC Budget 2016-17



WSC Financials July 2016 TYD

DRAFT

Agenda



Welcome and Chair's Report
Meric Koksai and Ashley Rutledge

Presentation from TDSB Planning Department

Motions to Approve Agenda
& Past Meeting Minutes (June 14 2016) *Meric Koksai*

Motions to Reconfirm and Approve
Budget for 2016/17 School Year *Meric Koksai*

YTD 2016 Income Statement and Financial Position
Meric Koksai and Ashley Rutledge

Principal's Report
Deborah Stern

Other Business

Motion to Adjourn
Meric Koksai

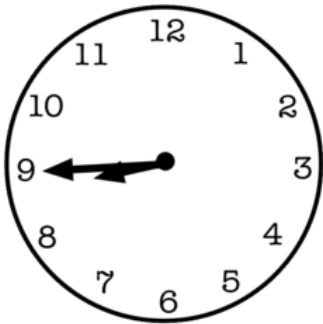
K-8 @ Whitney?

Don't miss the GCM September 26th

Representatives from the TDSB Planning department will be coming to our GCM on Monday September 26th to speak to us about a public process that is anticipated to commence later this fall that will include Whitney Jr. PS. The review will explore introducing a grade expansion at Whitney Jr. PS from JK to grade 6 to JK to grade 8, to which Rosedale Jr. PS could also become a feeder school. Currently both schools feed into Deer Park Jr. & Sr. PS for Grades 7 and 8. The intent of the discussion is to be proactive in communicating with the community about the process and to provide an opportunity for some preliminary questions and discussion.

Curriculum Night

Thank you to all parents and students who were able to attend our open house curriculum night on Thursday. We had a fantastic turnout and the school was buzzing with energy and excitement about the upcoming school year! The halls were filled with all the wonderful student work from our week of inspirational math and the assembly was captured the laughter and fun from families – a sign of a wonderful year to come! Thank you to all the teachers and support staff for your continued dedication to the Whitney community!



Kindergarten Hours

Please note the kindergarten hours for 2016-2017:

Parents and children are welcome to enter the kindergarten area at 8:45AM for drop off. Prior to that time, the gate at the top of the stairs will be closed. Teachers will be available at 8:45AM during supervision time, if you have any questions and or concerns. All students are expected to be at school by 9:00AM. After that time, they will be considered late to school.

8:45AM-9:00AM

9:00AM

11:30AM

12:30PM

12:45PM

3:15PM

3:15PM

3:30PM

Supervision in the kindergarten area

School Day Begins

LUNCH

Supervision in the kindergarten area

Afternoon class begins

School Day ends

Supervision in the kindergarten area

Remaining students will be taken to the office



Dear Whitney Families,

As the Whitney School Council, one of our key responsibilities is to ensure the annual Council budget is well funded for the upcoming school year. These funds enhance the educational experience of all Whitney students. The Council budget is funded by your direct donations as well as great, fun community events (like Harvest Fest!).

The total budget is \$67,000, approximately \$240 per student per year.

Thank you to all the families who have already generously donated.

Donations are gratefully received and are 100% tax deductible:

- **Donate Online** at: www.canadahelps.org/en/charities/whitney-school-council
- **Donate by Cheque:** Payable to "Whitney School Council" (put in Yellow bin in office)
Please include your name, mailing address, email address (for delivery of tax receipt).

**"The answer
is to try and
help others."**

Terry Fox

terry fox 2016

Dear Whitney Parents, Grandparents and Caregivers,

This will be the 26th consecutive year that the Whitney community has supported The Terry Fox Foundation and the legacy of Terry Fox. This year's run will take place on **Tuesday, September 27th** (storm date **Wednesday, September 28th**).

The Run will take place after morning announcements (approx. 9:10am).

All children from JK to Grade 6, and their parents and/or caregivers, are invited to participate. Volunteers are asked to stand along the route to make sure the students are safe and on course. Please email [Shelley Moretti](#) if you are able to volunteer.

Thank you from the Terry Fox Committee
(Patti Ann Allen, Shelley Moretti, Charlene Klein)

2016 Shirts for Sale! They will be sold on Monday September 26 and Tuesday September 27th in the mornings before school on the playground.

Prices are \$20 for all sizes (except 6X which is \$15)
Cash or cheque payment accepted.

Terry Fox Pledge Sheet



Donate Online
on Whitney's TF Page





harvest fest

Thursday September 29, 4-7pm

volunteers needed!

Everyone is welcome - Whitney families, friends, and alumni too! There will be delicious food, from burgers and hot dogs to smoothies and baked goods. Your kids will not want to miss the bouncy castles, face painting, wacky hair do's and more!

Please help us make Harvest Fest a memorable start to the year. We are looking for volunteers from all grades to take on part of the Festival.

For questions, you can contact the lead supervisors [Jill Spidle](#), [Ros Wilson](#) and [Sam Tremaine](#). Thank you in advance for your contribution!

Click [here](#)
to volunteer!



calling bakers costume drive

We are calling for bakers from all classes to make the evening as yummy as possible!

Please keep in mind that individual items will sell for \$1 each (please cut into pieces accordingly) and packaged items for \$5.

All baked goods must be nut and peanut free.

Baked goods should be dropped off in the teachers lounge by 1 pm on Wednesday, September 29th. To volunteer a baked item please click on the link above.

For questions, you can contact
Lisa Clark (lisadianaclarke@me.com)

Thank you in advance for your contribution!

At this year's Harvest Fest there will be a Halloween Costume Drive Box at the entrance of the Harvest Fest for parents to drop-off costumes. Donations of gently used (and complete) costumes welcome.



Congratulations
to 2016 winner
Rania, Grade 3



Animal Jelly Bean Guessing Jar \$1.00

Whitney Pen \$1.00

Whitney Mug \$2.00

Whitney Hat \$5.00

WRISTBANDS \$10.00

OR

TICKETS \$1.00

Provides unlimited access to...

Ice Cream Playground, Team
Challenge Obstacle & Fire Truck.

Also, **free** Wacky Hair & Face
Painting and signature on the
Whitney snow plow!

Burger \$6.00

Hot Dog \$4.00

Vegan Hot Dogs \$6.00

Baked Item \$1.00

Baked Package \$5.00

Popcorn Bag \$1.00

Smoothie \$2.00

Coffee \$1.00

Juice \$1.00

Water free



2nd
PLACE

Robin Y, Room 307



3rd
PLACE

Lea S, Room 302



HONORABLE
MENTION



▶ Whitney Public School - After 4 Programs



Mooredale membership is required and can be processed as part of your registration.

Program details can be found [here](#).

Online Registration:
Sign up [here](#).

If you have any questions about the programs, feel free to contact Eric Musselman at Mooredale: T: 416-922-3714 ext. 105 or by [email](#).

After Four Registration is still open. Please see below for the list of programs available for your child(ren) to enjoy in the comfort of Whitney Public School, during after school hours, run by Mooredale.

Monday

Cartoons Unleashed (Grades 4 -6) – this program focuses on Visual Art, Storytelling and Personal Development

French Early Learning (Grades 1 -3) – the goal of this program is to create a French speaking environment in a fun and interactive setting.

Tuesday

School Play (Grades 1 – 6) – Charlie and the Chocolate Factory the Musical. A yearly favourite, the season concludes with a performance for the rest of the school.

Ukelele Orchestra (Grades 1 – 3) – Led by local musician and entertainer Rob Joy, this class will see students successfully playing their first song by the end of the first class. Ukeleles provided

Wednesday

Karate (Grades 1 – 6) – James Greer returns for another season of skill development and martial arts training

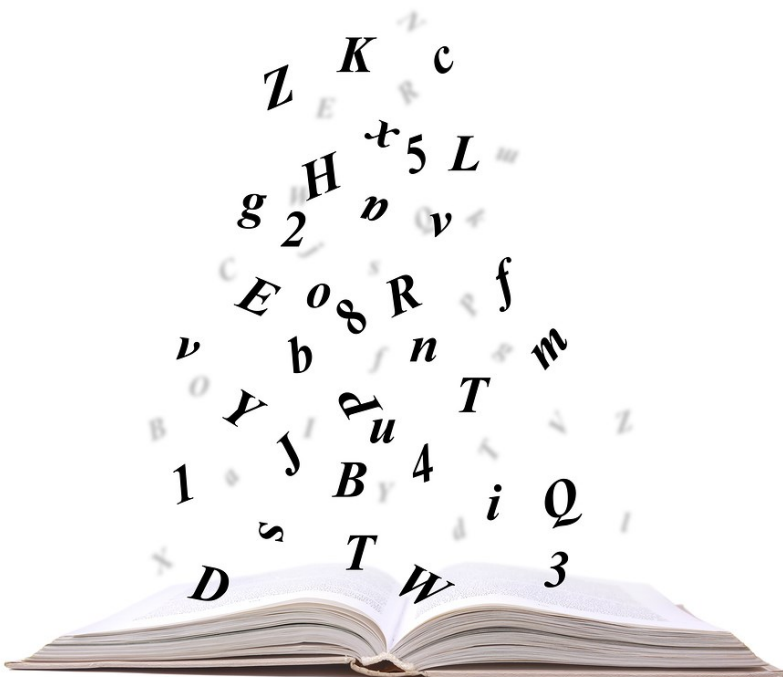
Thursday

Lego Engineering (Grades 1 -3) – Participants learn basic engineering principles while building their Lego structures.

****CAD 3D Design and Printing** (Grades 5 -6) – Not listed in the fall guide, we are working to bring this exciting program to Whitney for a 4 week trial in October. Stay tuned for details!

Primary Language Volunteer

Please welcome our returning volunteer, **Lynn Buckle** to our primary classrooms. Lynn is a semi-retired speech-language pathologist who worked for the Dufferin-Peel Catholic District School Board. She has graciously offered to volunteer in our classrooms to support students on their oral language and early literacy skills. Students who require either enrichment and or a boost with letter recognition and naming, letter sounds and sight words will enjoy and benefit from having Lynn volunteer in the classroom.





thank you! Thank you Whitney parents for the warm welcome and support as this year's extracurricular sports have taken off. Thank you to all the aspiring athletes who have come out so far. I'm blown away by all the enthusiasm and hard work. Passion and practice will help all athletes continually improve. Keep it up, Whitney!

cross-country

This year's first Cross-country meet comes a little earlier than usual, landing on Friday September 30th. Our first meet will be at Ashbridges Bay. The temperature has begun to cool down quite quickly in the mornings, so make sure your kids are dressed in layers to prevent stiff muscles.

There will be a bus leaving Whitney at 8:45 a.m. for any student who requires a ride (please meet Mr. Chang at 8:30 in the gym). If you would like to drive your child to the event, please email me (Ian.Chang@tdsb.on.ca) to let me know. The first meets will begin at 10 am sharp with the Grade 1 girls followed by the Grade 1 boys; this pattern will continue until the Grade 6 boys complete the day. Each race is about 15 minutes long. If you are driving your child, please make sure to arrive with plenty of time to spare, as events can run early.

Students are asked to wear their Whitney t-shirts (one will be provided if you don't own one) when competing. Also, the bus will NOT be returning in time for hot lunch, so please make sure to pack a lunch, snacks, and quiet activities to do while waiting for your race! If you have any questions or concerns feel free to contact me.

slo pitch

The boys will be playing in a league format this season. With two home and 2 away games, Whitney will play at Hawthorne, Frankland and Rosedale Park (home). All games will be played after school hours. Game dates are





Monday 26 — Friday 30

MONDAY	TUESDAY		THURSDAY	FRIDAY
26 Primary Cross Country (8:00a.m. @ Whitney) Boys Slo Pitch Practice (3:30–4:30@Whitney)	27 Boys and Girls Football Practice (7:30 @ Whitney) Girls Slo Pitch Practice (3:30–4:30 @ Whitney)	28 Junior Cross-country (8:00 @ Whitney) Boys Slo-Pitch League Game @ Frankland after school	29 Boys and Girls Football Practice (7:30-8:30am) Boys Slo-Pitch League Game Hawthorne @ Whitney after school (Rosedale Park) Girls Slo-pitch Practice (3:30-4:30pm)	30 Cross-country Meet Ashbridges Bay All day, starting at 10 am (see above for scheduling de- tails))

Monday 3 — Friday 7

MONDAY	TUESDAY	WEDNESDAY	THURSDAY	FRIDAY
3 Boys Slo-Pitch League Game Frankland @ Whitney after school (Rosedale Park)	4 Boys and Girls Football Practice (7:30 @ Whitney) Girls Slo Pitch Practice (3:30–4:30 @ Whitney)	5 Advancing Cross- Country Runners Prac- tice (8am) Boys Slo-Pitch League Game Whitney @ Hawthorne after school	6 Boys and Girls Football Practice (7:30 @ Whitney)	7 PA Day