



# York Memorial CI- School Reconstruction

**UPDATE**

Community Meeting

**March 21, 2023**

# Land Acknowledgement

We acknowledge we are hosted on the lands of the Mississaugas of the Anishinaabe, the Haudenosaunee Confederacy and the Wendat. We also recognise the enduring presence of all First Nations, Métis and Inuit peoples.

# Introductions

- **Liban Hassan**, Trustee, Ward 6, TDSB
- **Roni Felsen**, Superintendent
- **Donald Drummond**, Principal, YMCI and GHCI, TDSB
- **Maia Puccetti**, Executive Officer, Facility Services and Planning, TDSB
- **Prithula Prosun**, Manager, Project Dev. & Community Consultation, TDSB
- **Tom Schloessin**, Design Coordinator, TDSB
- **Jill Taylor**, Principal, THA Architects

# Agenda

1. Opening Remarks + Introductions	Roni Felsen - SOE Maia Puccetti - Exec. Officer
2. School Update: Key messages	Donald Drummond - Principal Liban Hassan - Trustee
3. Project Context & Design Update	Jill Taylor - THA Architects
3. Project Update	Prithula Prosun - Capital Manager Tom Schloessin - Design Coordinator
4. Questions and Answers	All
5. Adjournment	Roni Felsen - SOE Maia Puccetti - Exec. Officer

# Opening Remarks

**Roni Felsen**, Superintendent  
**Maia Puccetti**, Executive Officer

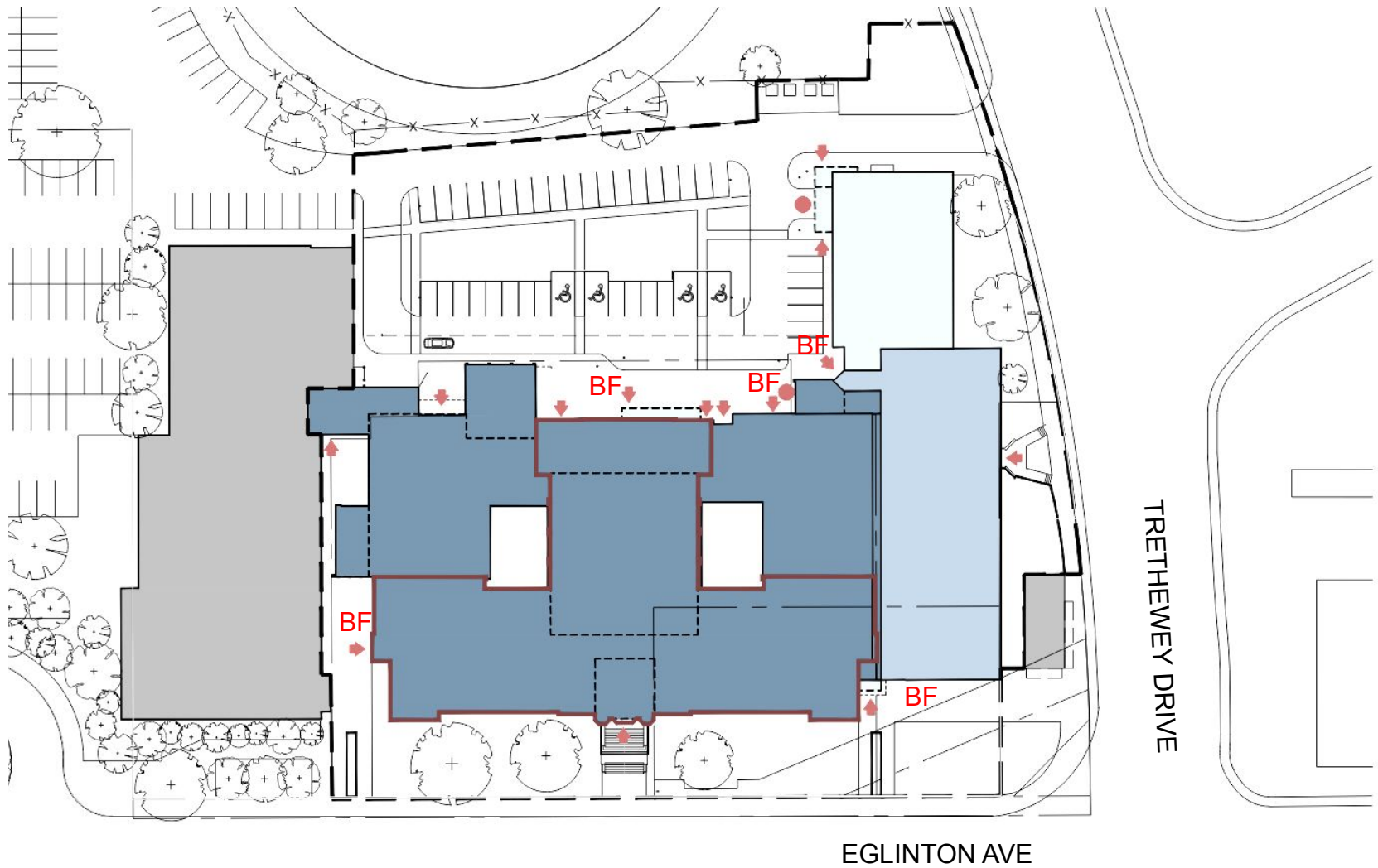
# School Update: Key messages

Donald Drummond, Principal  
Liban Hassan, Trustee

# Project Context & Design Update

**Jill Taylor**  
Principal, THA Architects

# Site Plan





2019 Fire damage to 1929 structure and additions.



Post-Fire stabilization, dismantle & salvage.



1929 Façade Stabilization, Remediation & Partial Rehabilitation





Restoration of the 1929 front façade east bay.



Review of  
salvaged  
limestone at  
CRL shop.



Pre-fire view of east auditorium wall with stained glass.



Post-fire view of dismantled east auditorium wall.



Meeting at EGD studio for the restoration of the stained glass windows.



Above: Conservation of the John Hall mural to be reinstated in the foyer.

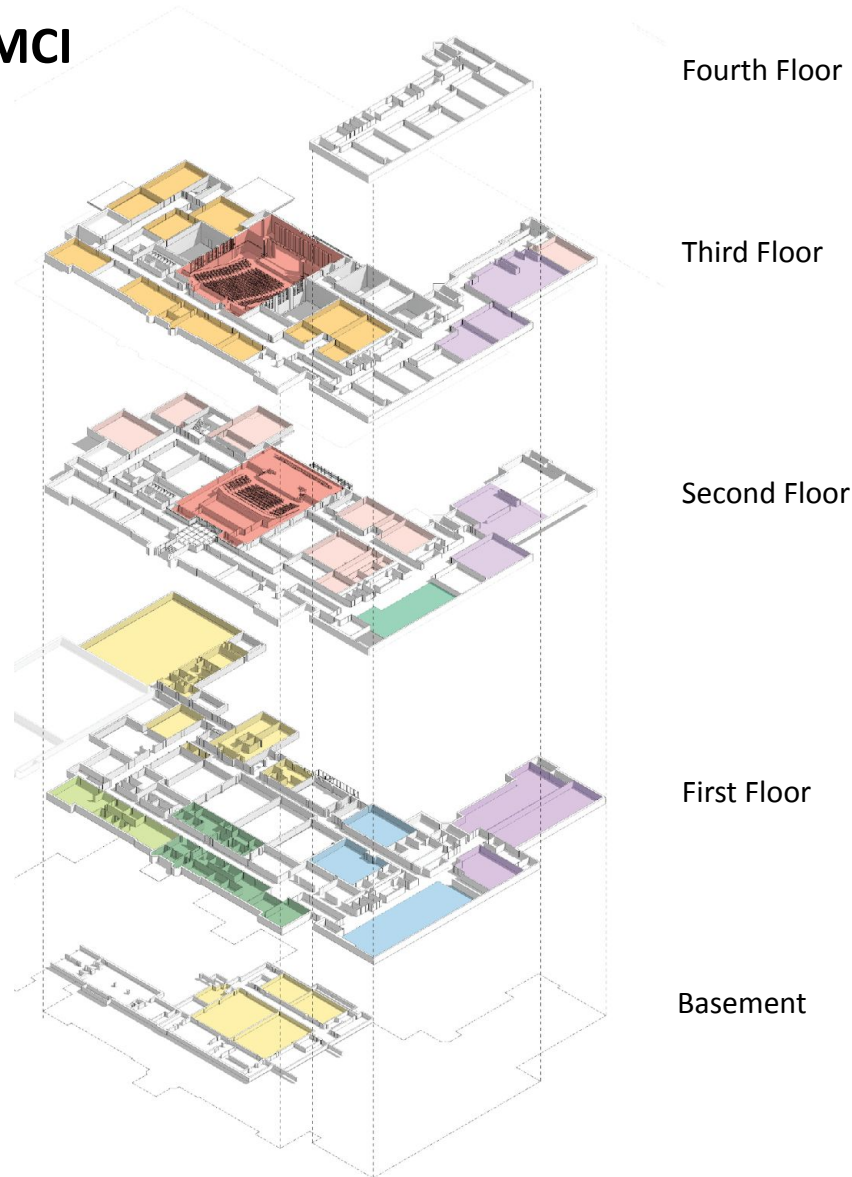
Left: Foyer post-fire with John Hall mural removed for conservation.



# New Building Design

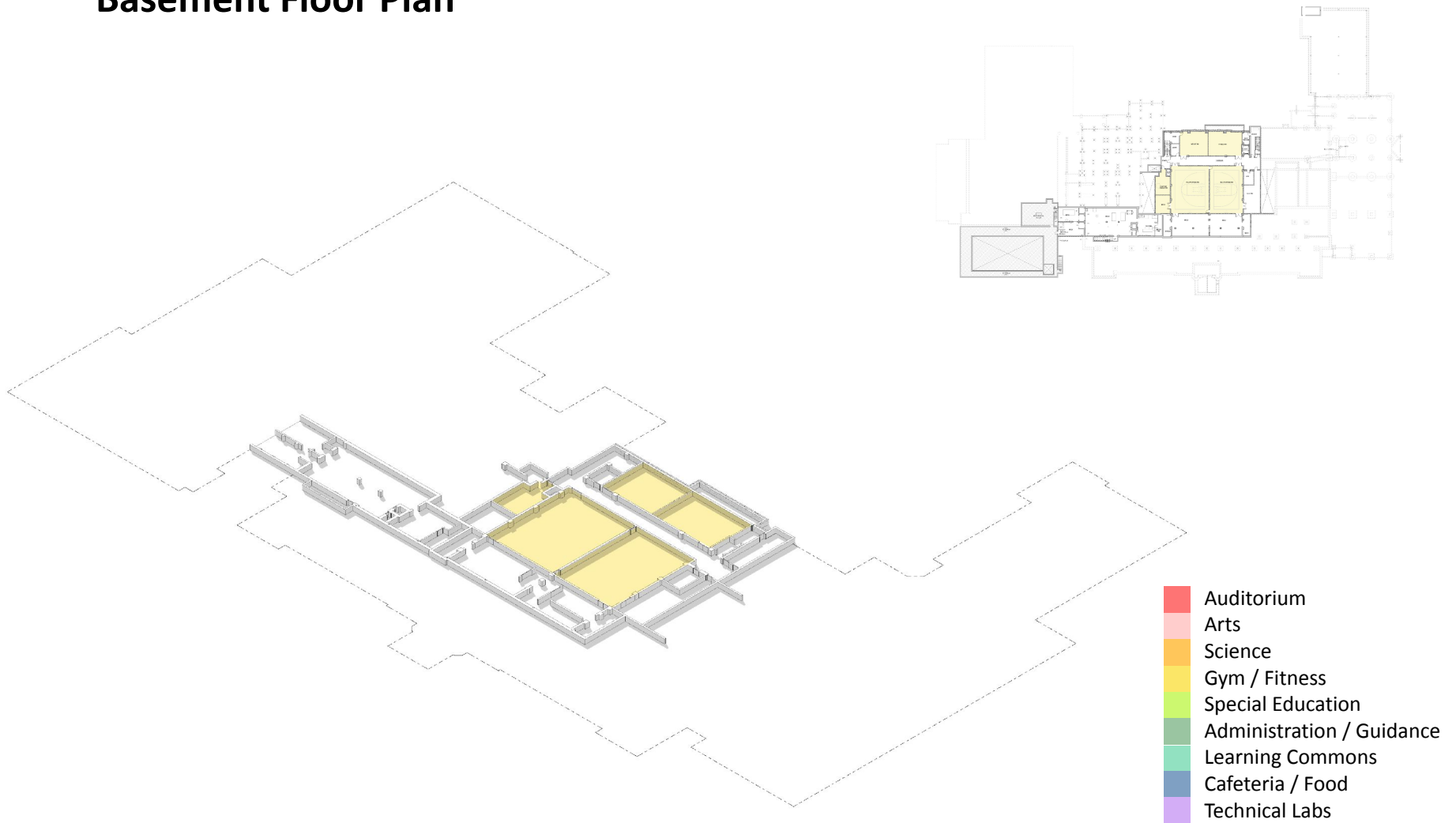
- Designed to accommodate the new York Memorial Collegiate Institute.
  - ✓ Combination of YMCI and GHCI and respective key programs in each institution (Arts and Technical Programming, etc.)
- Up to 1,300 pupil places are anticipated
- Total facility area 17,070 square meters (183,740 square feet).
- Combination of 3 and 4 storey structures.

# Stacked plan YMCI



- Auditorium
- Arts
- Science
- Gym / Fitness
- Special Education
- Administration / Guidance
- Learning Commons
- Cafeteria / Food
- Technical Labs

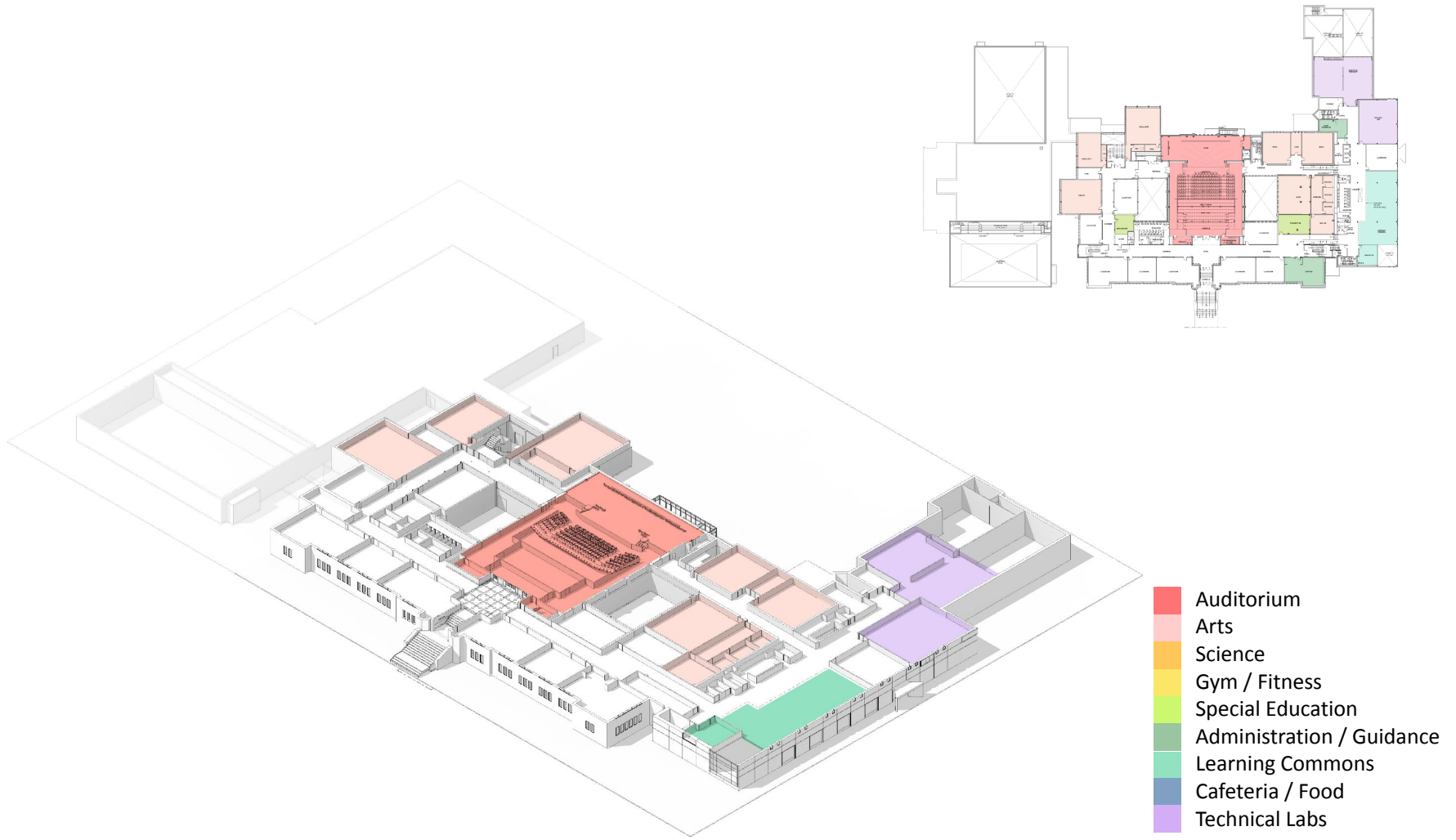
# Basement Floor Plan



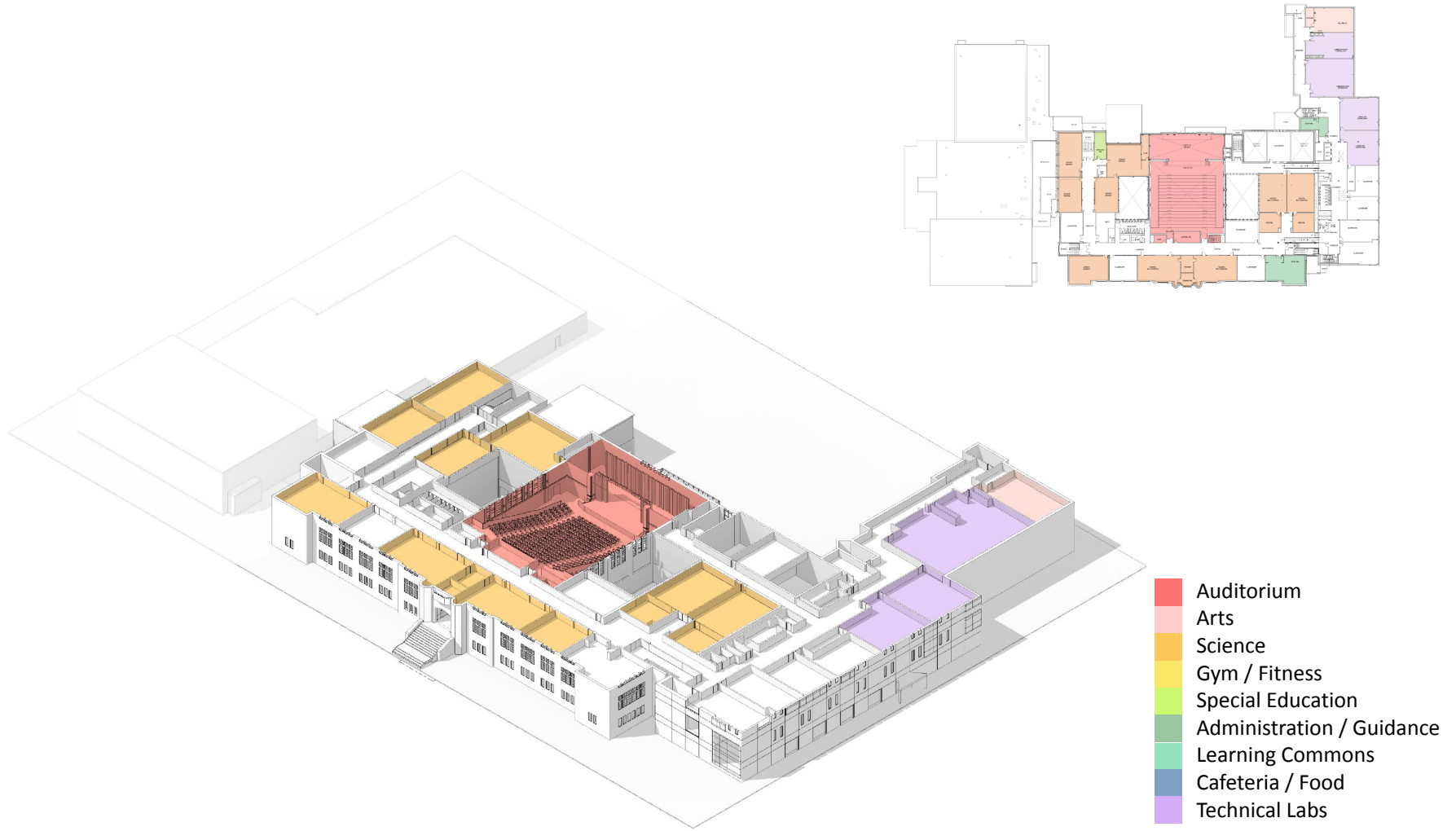
# 1<sup>st</sup> Floor Plan



## 2<sup>nd</sup> Floor Plan

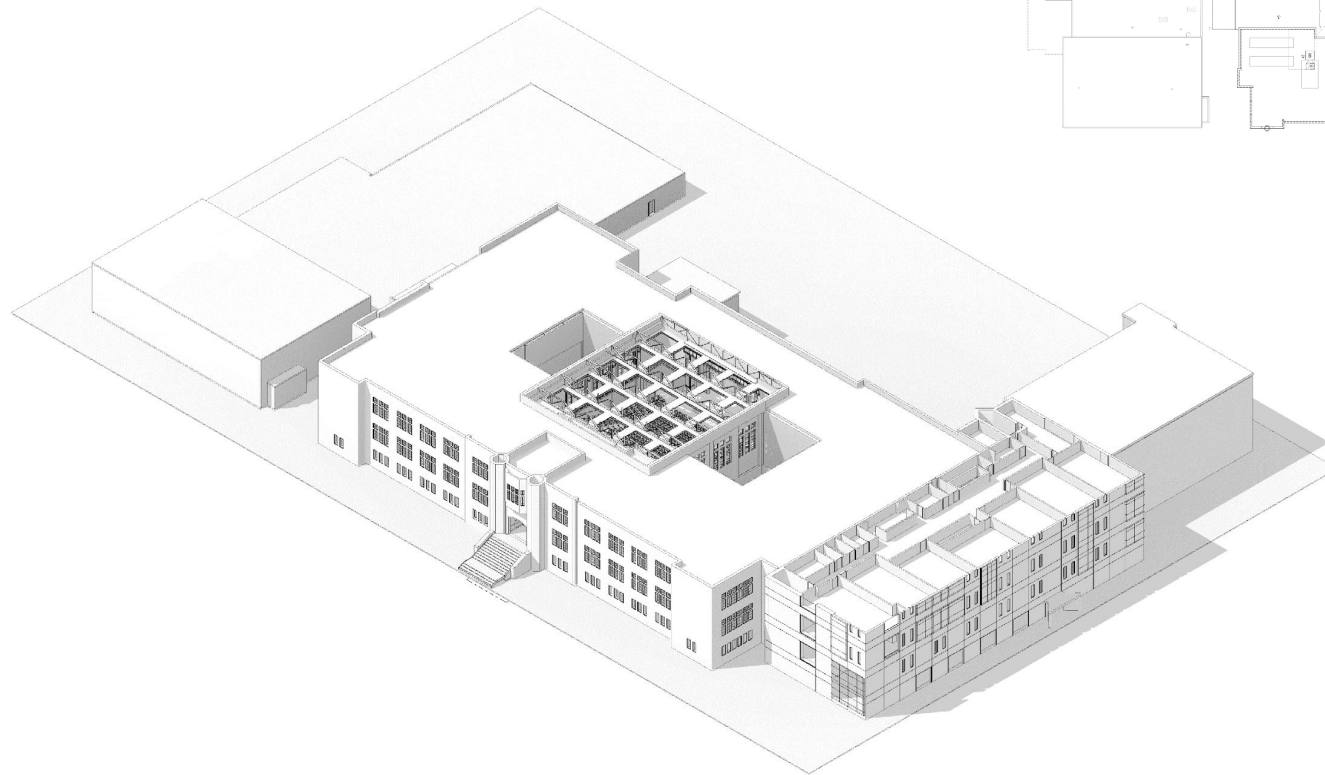


# 3<sup>rd</sup> Floor Plan



- Auditorium
- Arts
- Science
- Gym / Fitness
- Special Education
- Administration / Guidance
- Learning Commons
- Cafeteria / Food
- Technical Labs

# 4<sup>th</sup> Floor Plan

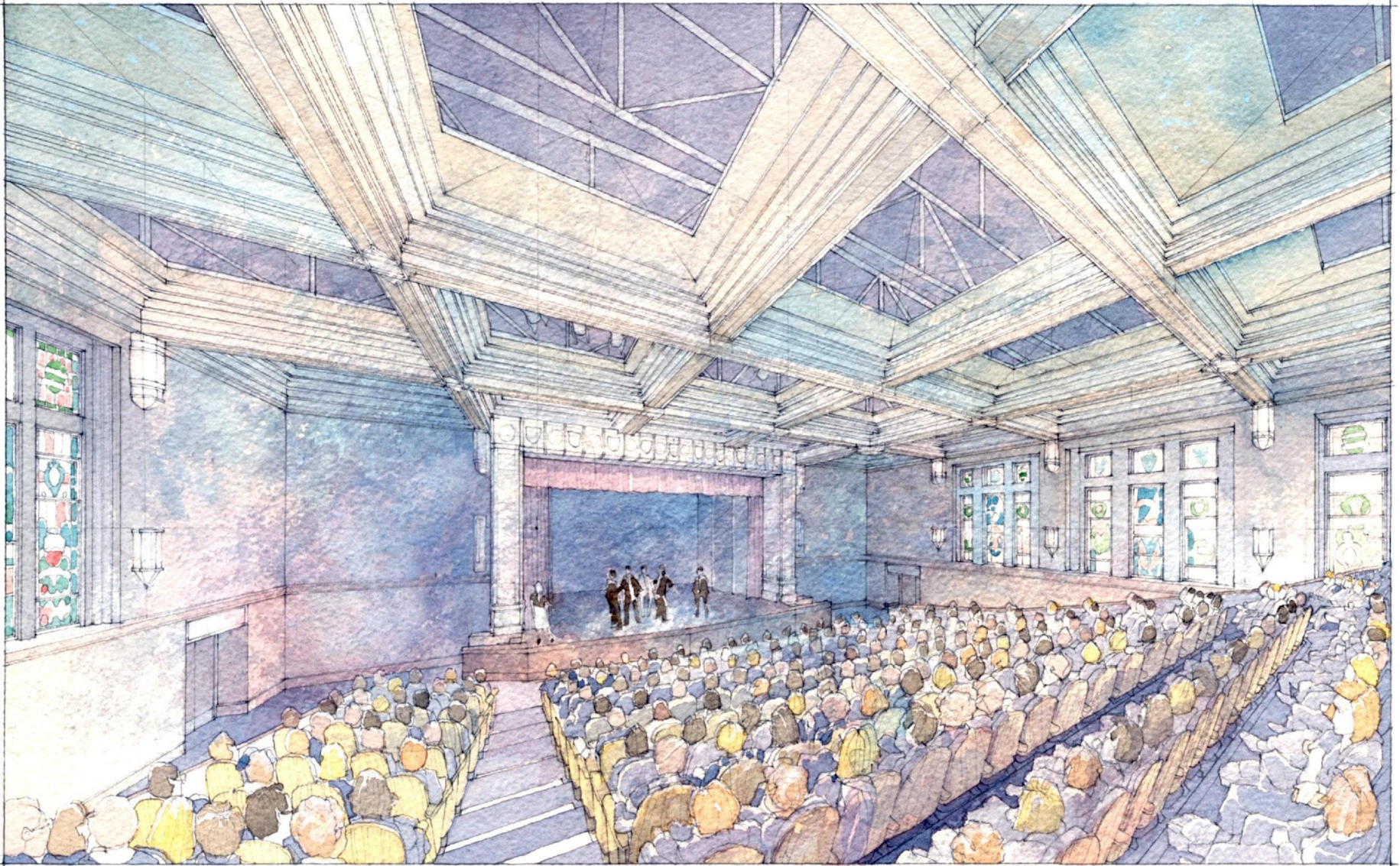


- Auditorium
- Arts
- Science
- Gym / Fitness
- Special Education
- Administration / Guidance
- Learning Commons
- Cafeteria / Food
- Technical Labs

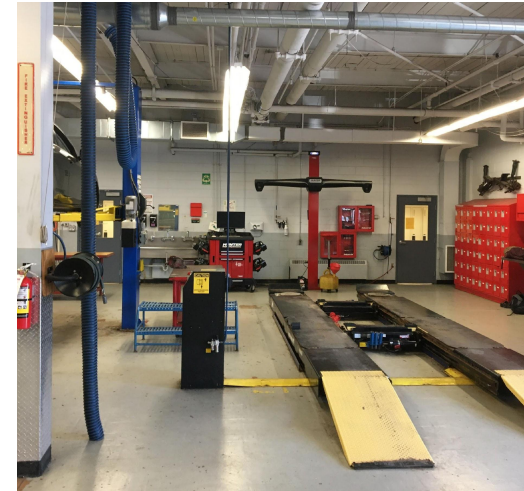
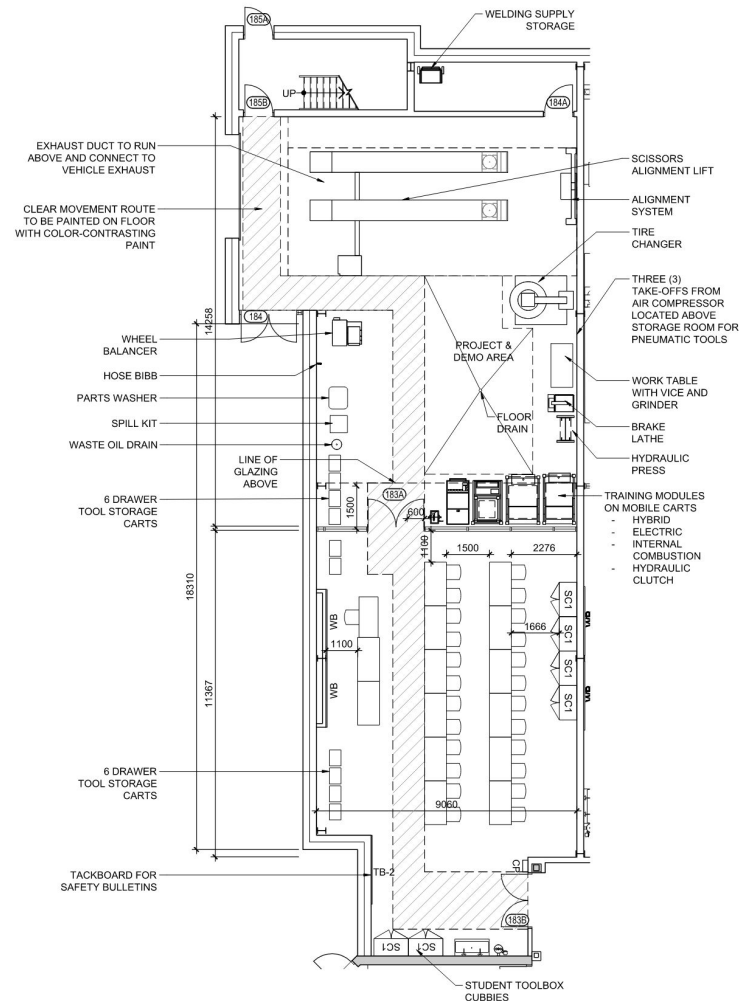


Image of pre-fire  
Auditorium at YMCI,  
sourced from Twitter.



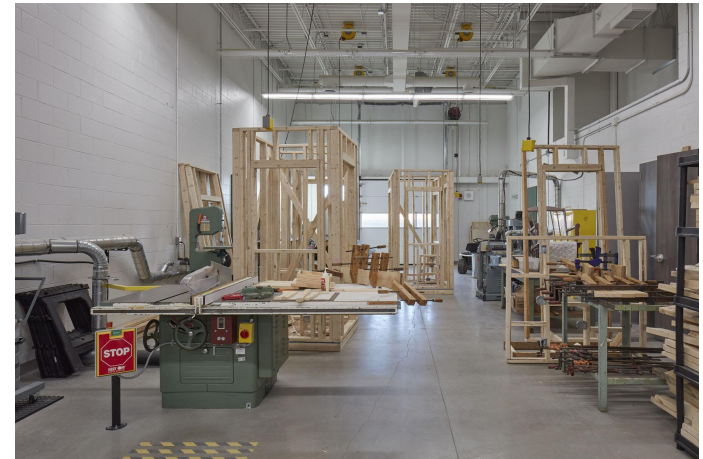
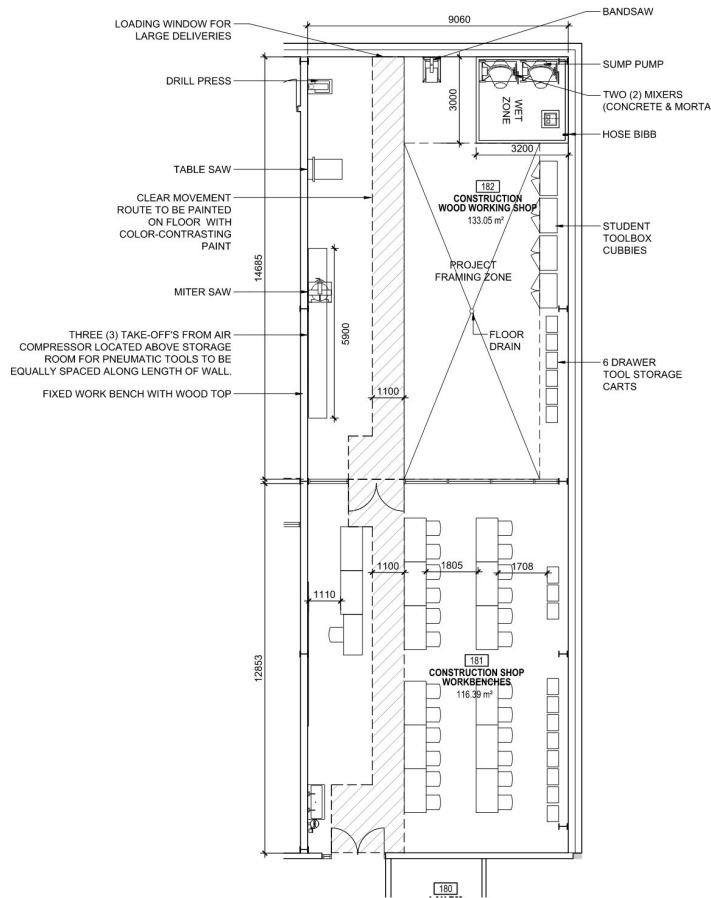


# Transportation Workshop

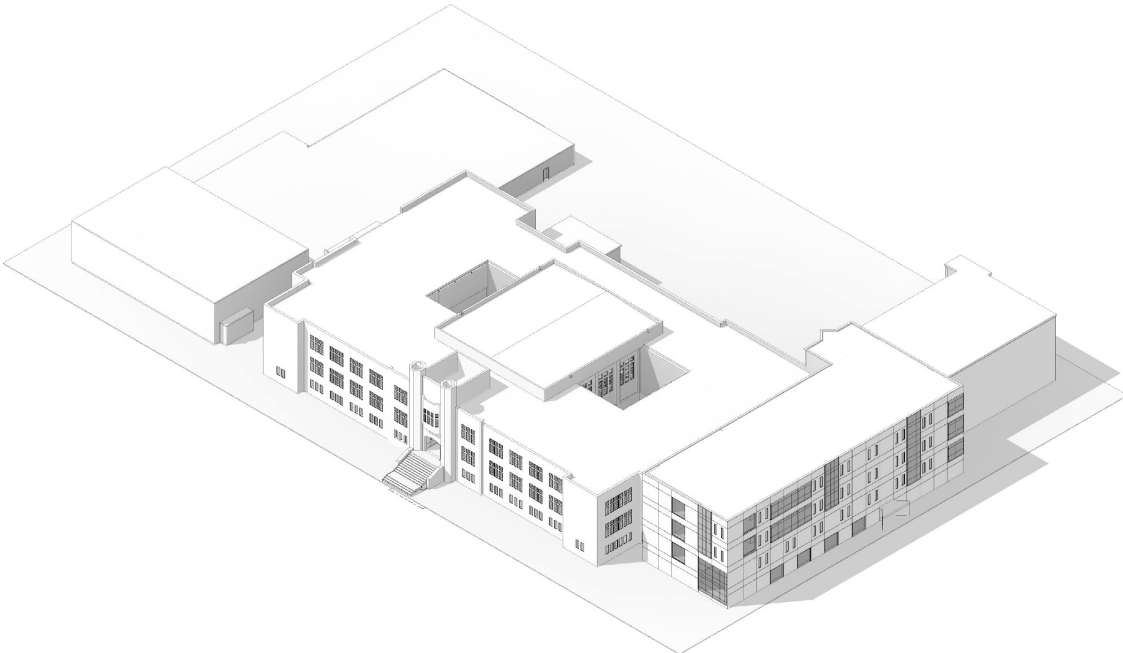
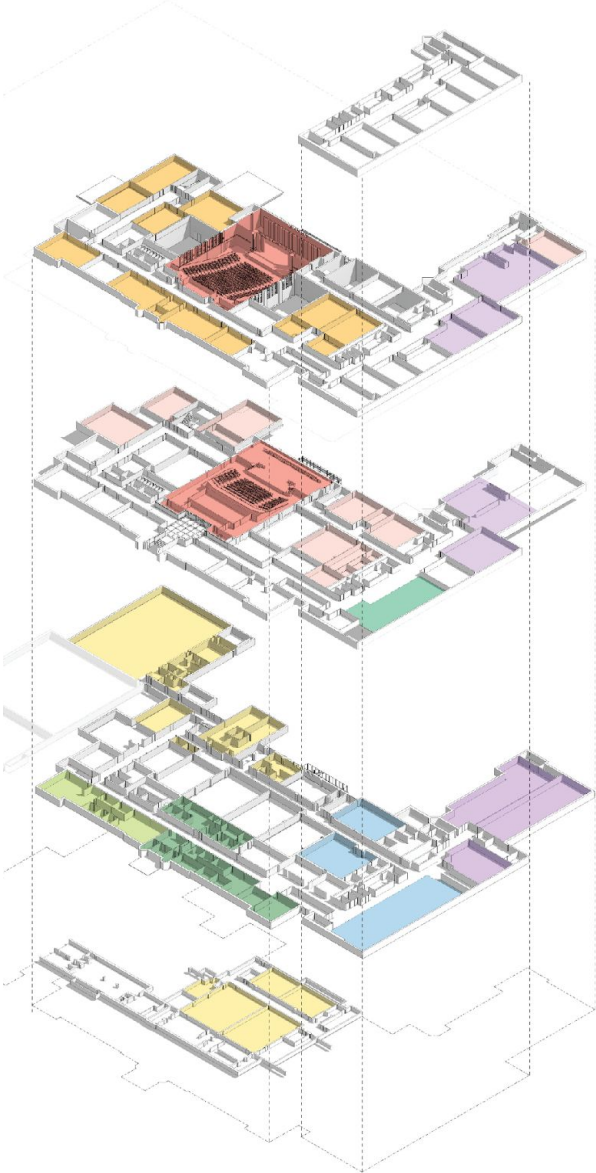


Shop visit to identify best practices for the new transportation workshop.

# Construction Workshop



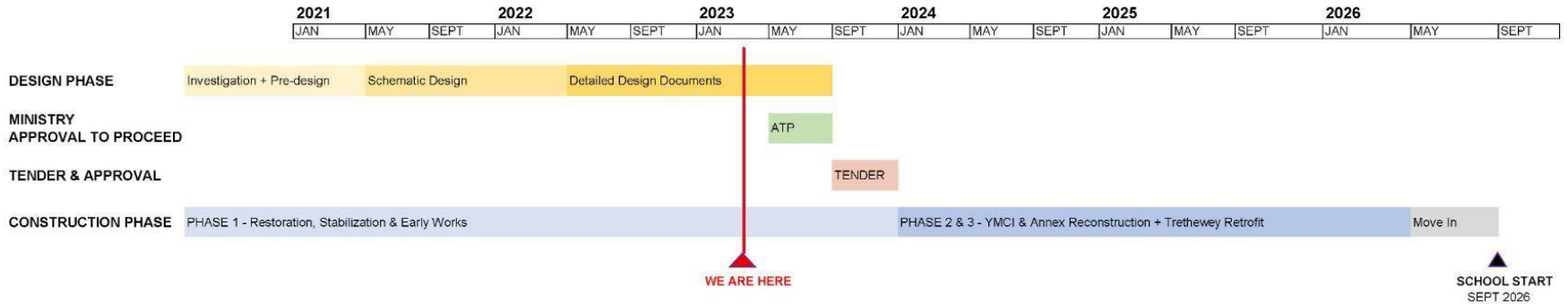
Example of a Construction Technology workshop.



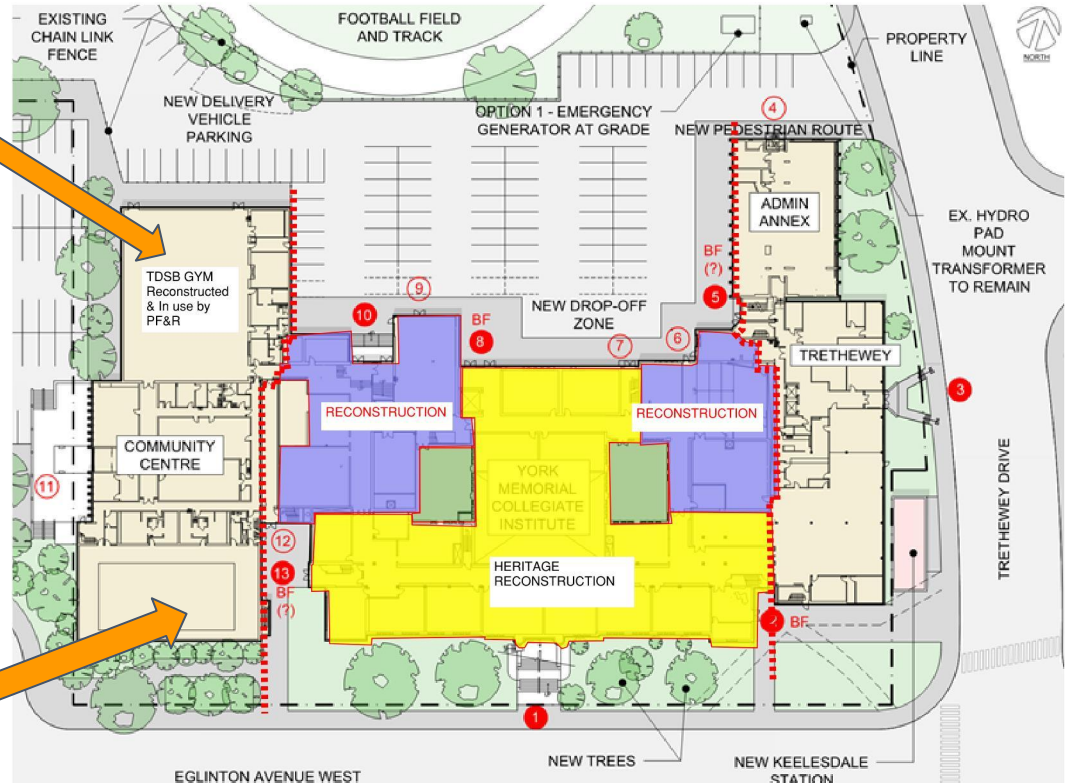
# Project Update

**Prithula Prosun, Capital Manager**  
**Tom Schloessin, Design Coordinator**

# Project Timeline



# Project Progress



## CURRENT AREAS OF ACTIVITY -

- YELLOW BLOCK - HERITAGE RECONSTRUCTION & AUDITORIUM
- BLUE BLOCK - RECONSTRUCTION OF NON - HISTORICAL AREAS
- 2 TRETHEWEY + ANNEX - DESIGN OF NEW ACADEMIC AREAS

# FINAL CONTEXT





# Q&A

# Thank you!



Toronto  
District  
School  
Board