

# **Options for the Accommodation of York Memorial CI for 2019-20**

# Contents

Item	Slide
<b>Option 1</b> – Accommodate York Memorial CI and George Harvey CI in the George Harvey building as two separate schools	3
Location	4
Building	5
Rooms in the Building	6
Enrolment and Instructional Spaces Required	7
George Harvey Site and Floor Plans	8-12
Advantages and Disadvantages	13
<b>Option 2</b> – Accommodate York Memorial CI in the Scarlett Heights building (George Harvey CI remains in its building)	14
Location	15
Building	16
Rooms in the Building	17
Enrolment and Instructional Spaces Required	18
Scarlett Heights Site and Floor Plans	19-21
Advantages and Disadvantages	22
<b>Appendix</b>	23

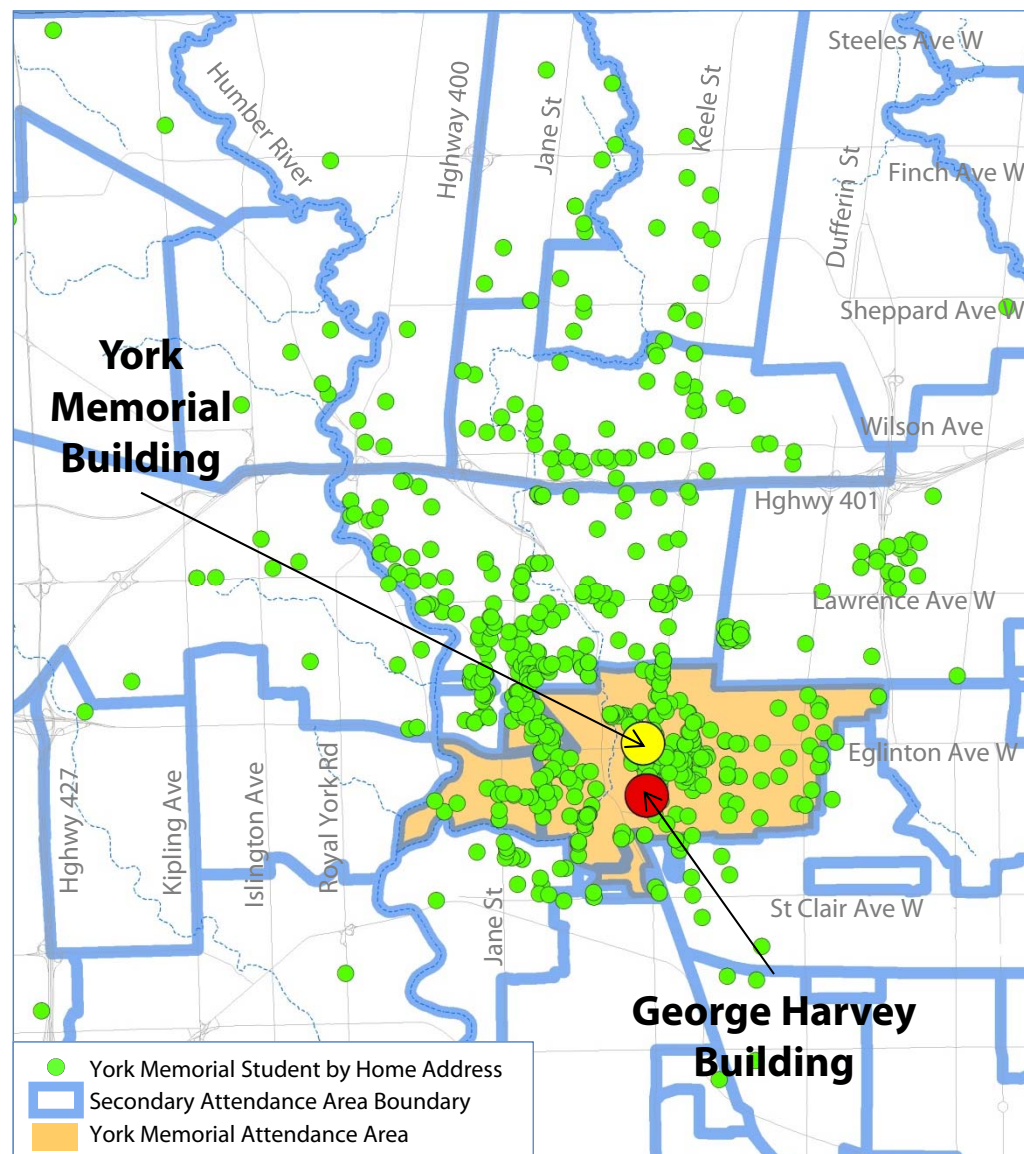


## Option 1

- Accommodate York Memorial CI and George Harvey CI in the George Harvey building as two separate schools

## Location

- 1700 Keele Street – 700 meters south of York Memorial building
- Located within the York Memorial attendance area
- All addresses in the York Memorial attendance area are within 4.8 kms distance of George Harvey
- Average distance of York Memorial students to George Harvey is 3.3 kms



# Building

- Built 1951
- 6.2 acres
- 269,365 square feet
- 3 storeys and a basement
- 85 instructional spaces
- Capacity of 1,536 pupil places
- 102 parking spots
- Somewhat accessible:
  - no accessible washrooms
  - no entrances with power-operated doors – only one level entrance (the main entrance)
  - elevator to all floors but there are changes in level in the basement making it inaccessible)





# Instructional Spaces in the Building

Space Type	Count
Classroom	63
Science lab	5
Music/drama room	3
Art room	2
Shop	5
Gym	3
Weight room	1
Pool	1
Library	1
Auditorium	1
Total	85

Above count excludes space occupied by the child care centre (2 classrooms and 2 office areas) and Skylark Youth Services program (2 classrooms and 3 smaller rooms).

# Enrolment and Instructional Spaces Required

Recommend that the two schools have their lunch periods at different times to increase access to specialized spaces (see slide 26 in the Appendix for example timetables).

## George Harvey CI

Projected enrolment (September 2019)	495
---	-----

Estimated minimum instructional spaces required (based on teaching staff allocation and assuming every room is used for 4 periods a day: 38.50 teachers x 3 periods taught per day / 4 periods per room)	29
--	----

## York Memorial CI

Projected enrolment (September 2019)	894
---	-----

Estimated minimum instructional spaces required (based on teaching staff allocation and assuming every room is used for 4 periods a day: 52 teachers x 3 periods taught per day / 4 periods per room)	39
---	----

## Combined George Harvey and York Memorial

Projected enrolment (September 2019)	1,389
---	-------

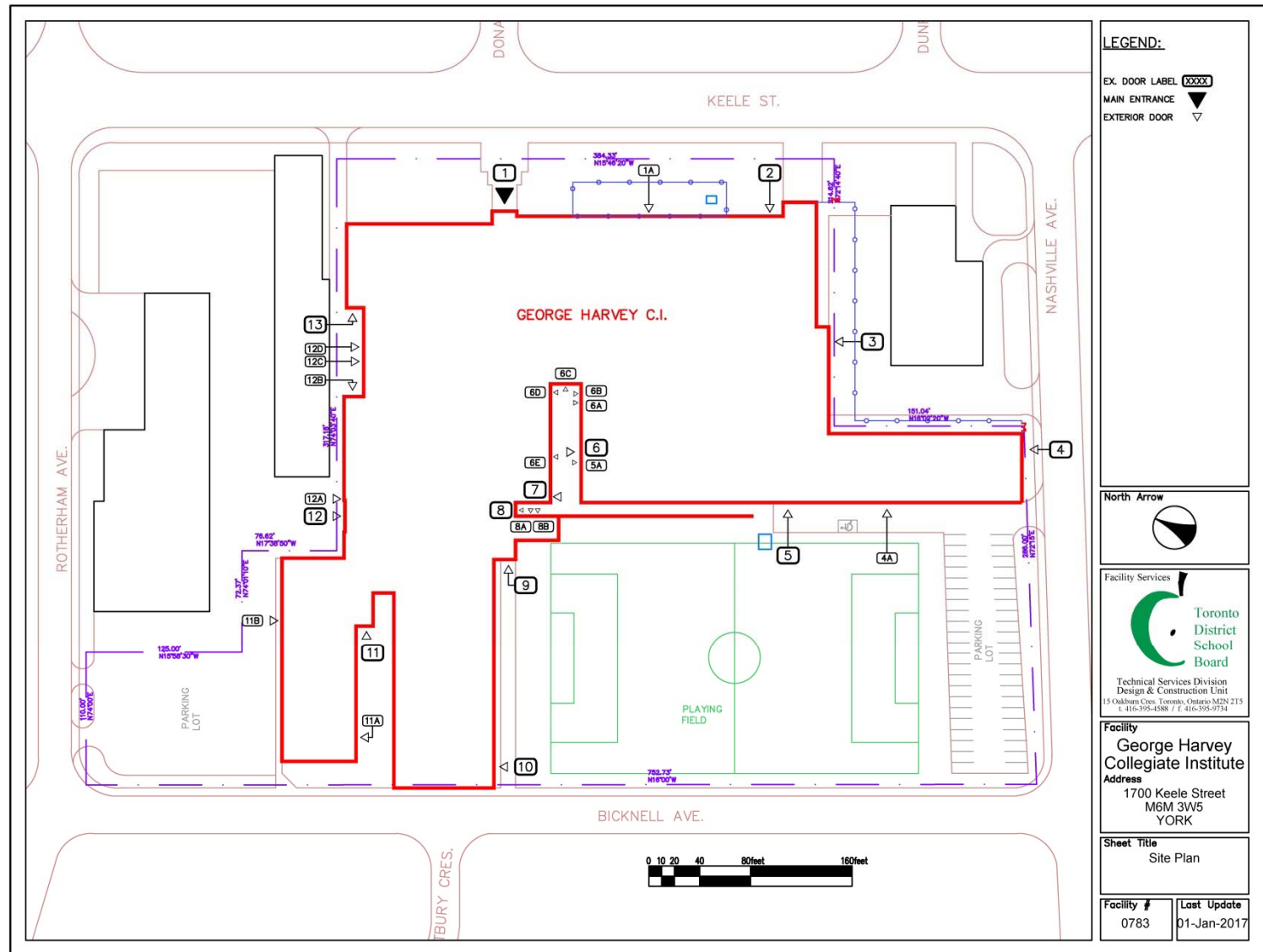
Estimated minimum instructional spaces required (based on teaching staff allocation and assuming every room is used for 4 periods a day)	68
---	----

Building capacity (Ministry formula based on 21 pupils per classroom)	1,536
--	-------

Utilization rate (projected enrolment / building capacity)	90%
---	-----

Option 1

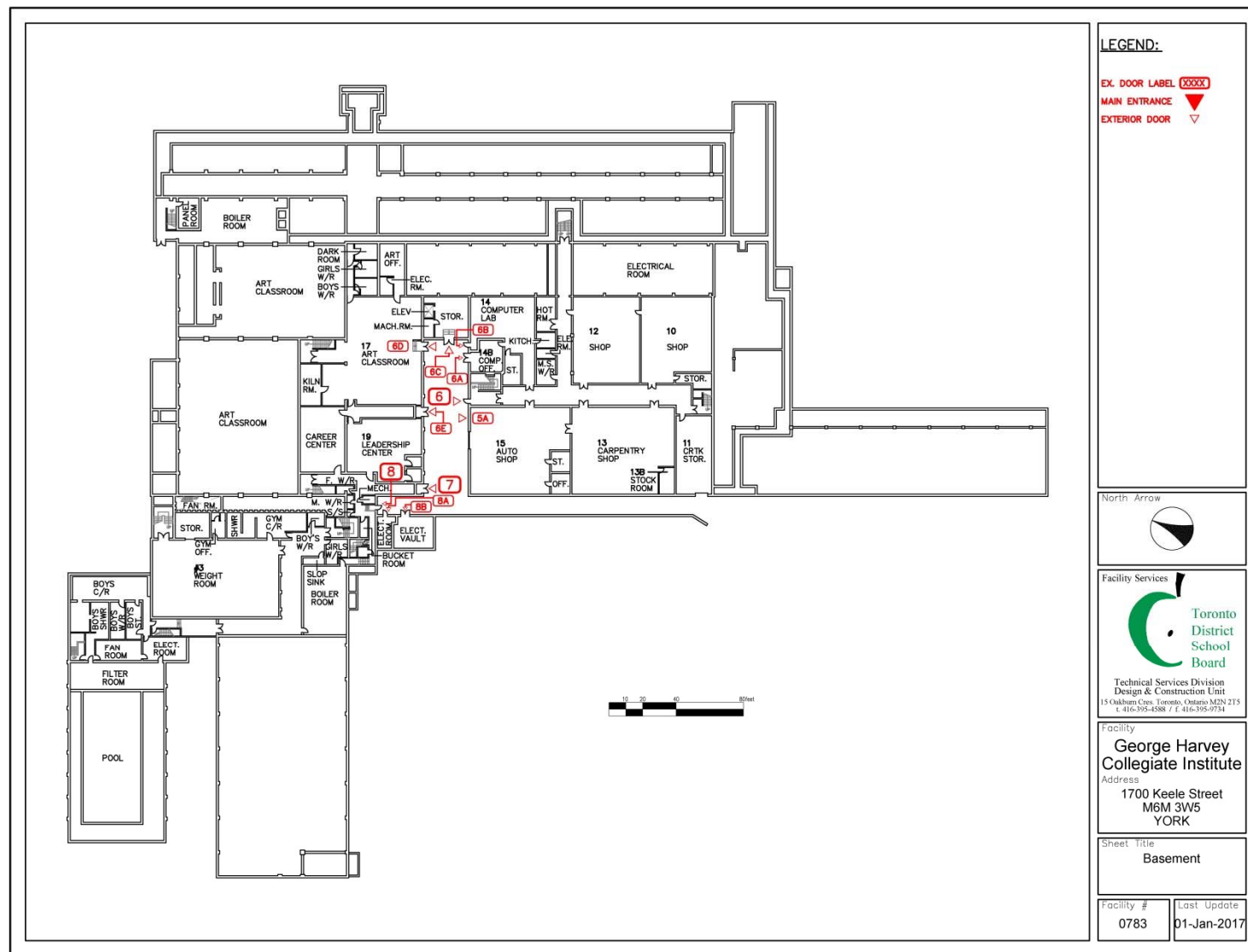
# George Harvey Site Plan





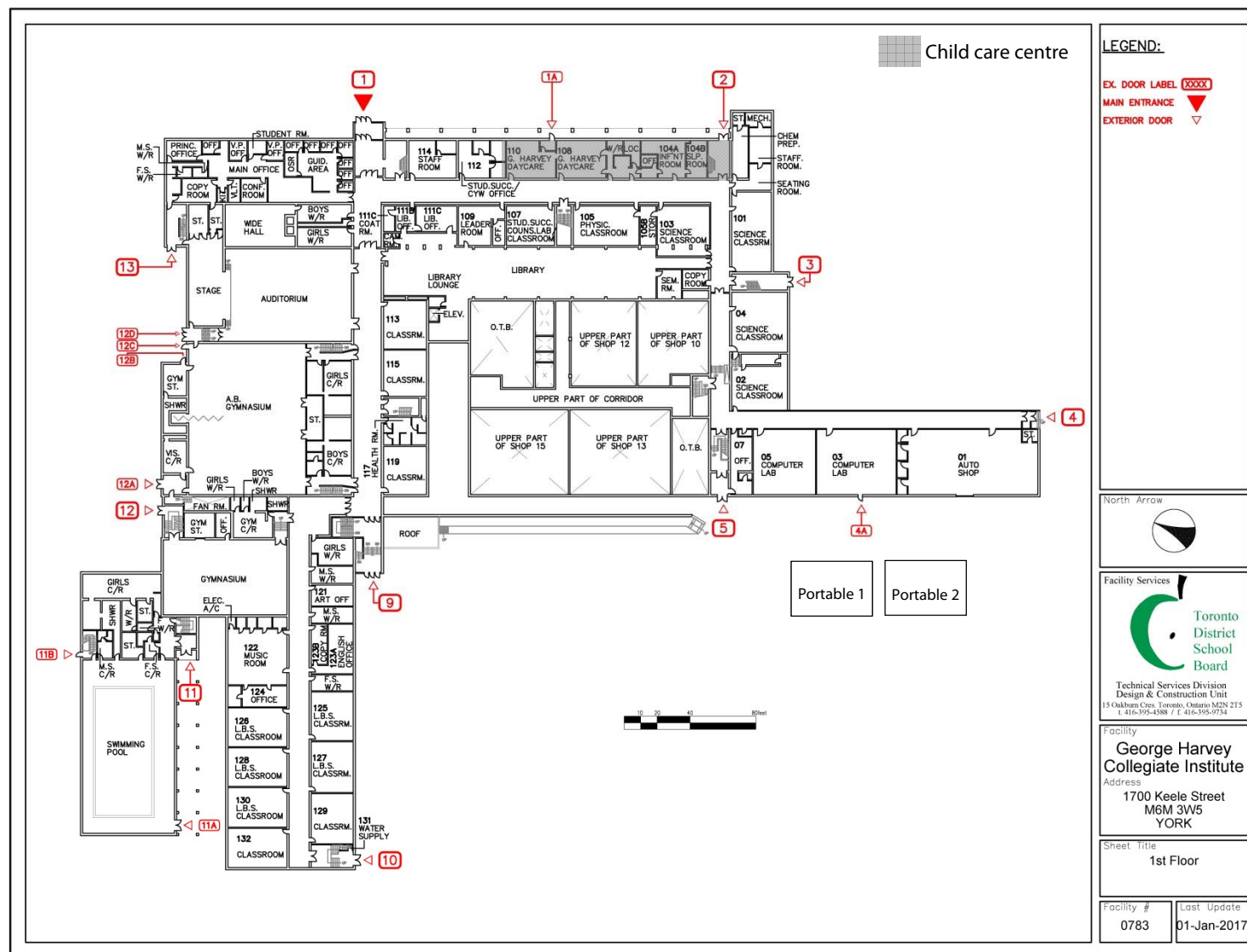
## Option 1

# George Harvey Basement



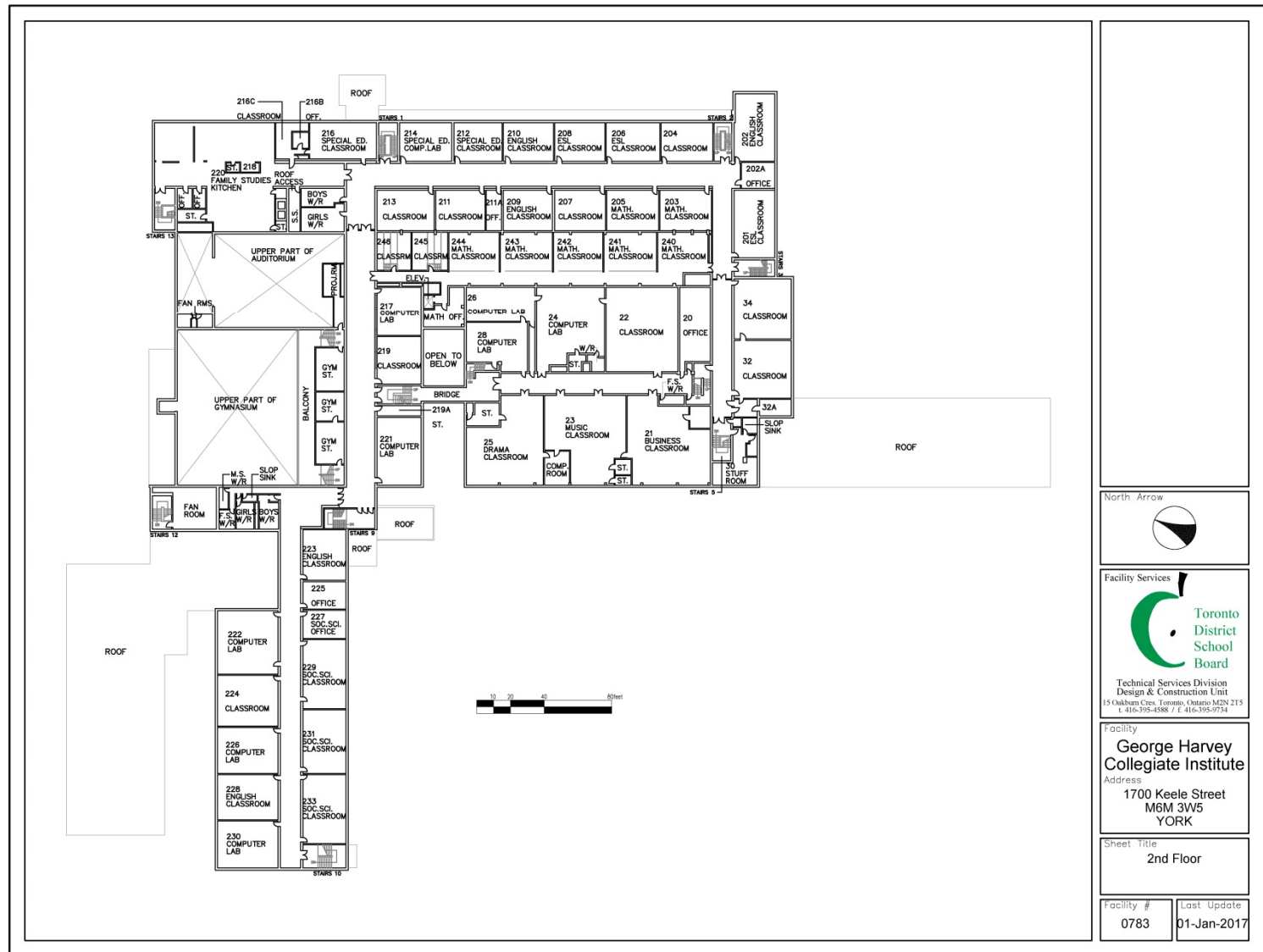
Option 1

# George Harvey 1<sup>st</sup> Floor



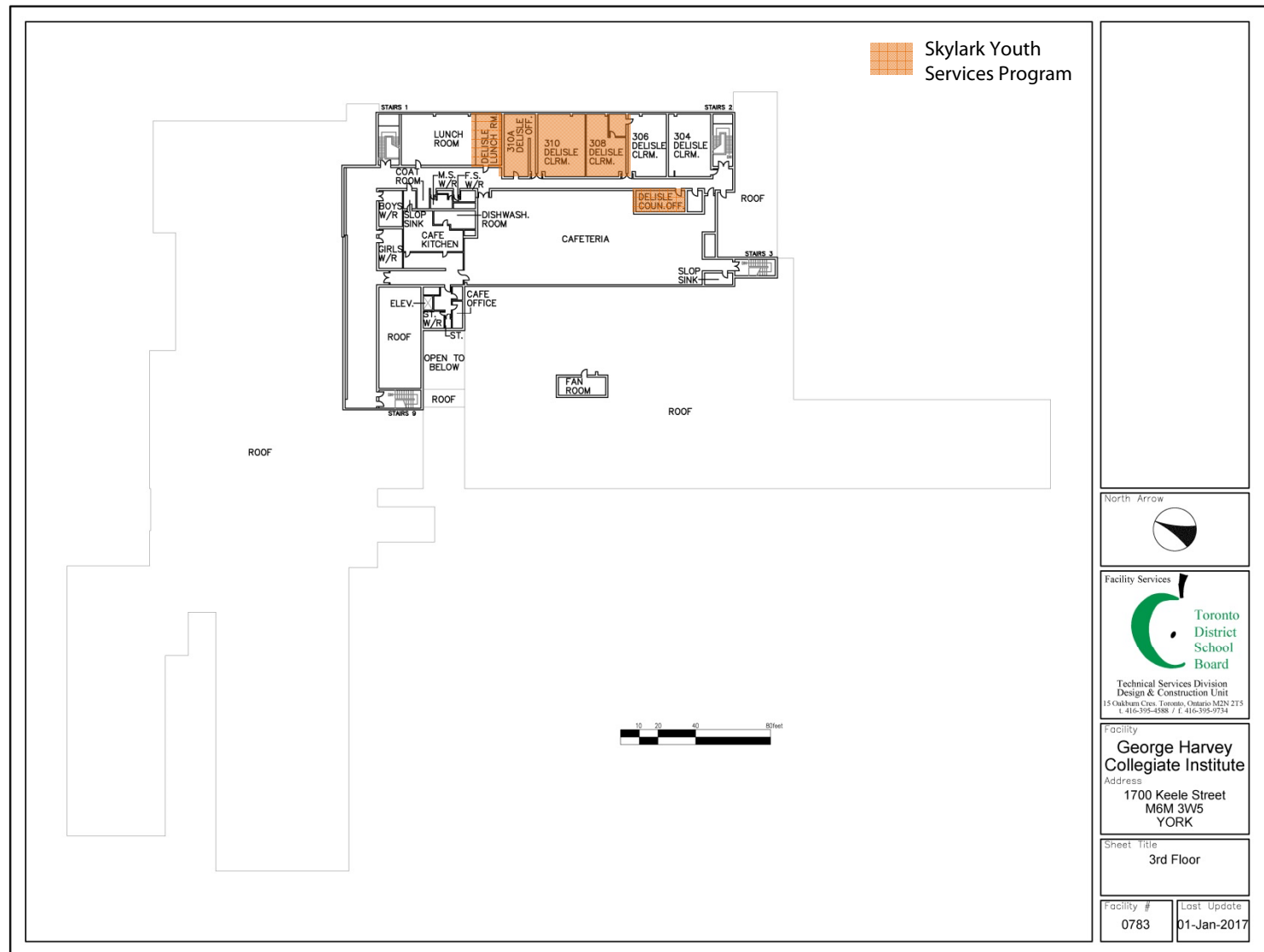
Option 1

# George Harvey 2<sup>nd</sup> Floor



## Option 1

# George Harvey 3<sup>rd</sup> Floor



## Advantages and Disadvantages

Advantages	Disadvantages
George Harvey building is located within the York Memorial attendance area in close proximity to the York Memorial building – no transportation of York Memorial students is required	York Memorial and George Harvey will need to share spaces such as science labs, art rooms, music/drama rooms, gyms, library, auditorium, cafeteria and pool
George Harvey building is already an operating school with furniture, equipment and surplus space	George Harvey site has one sports field – when a second sports field is required, a school will have to go to Keelesdale Park (located 1.5 kms away from the George Harvey building) or possibly York Memorial sports field (to be explored)
York Memorial and George Harvey can maintain their own identities	Requires George Harvey to reorganize their use of space to free up rooms for York Memorial
George Harvey building has a pool	Some space modifications may be required
No need to reopen another building and acquire more furniture and equipment	Adult program (Essential Skills Upgrading) will need to continue to be accommodated in another building
York Memorial students who pick up younger siblings from nearby elementary schools will be able to continue doing so	Skylark Youth Services program will need to continue to operate with two fewer classrooms
George Harvey building will be well utilized	



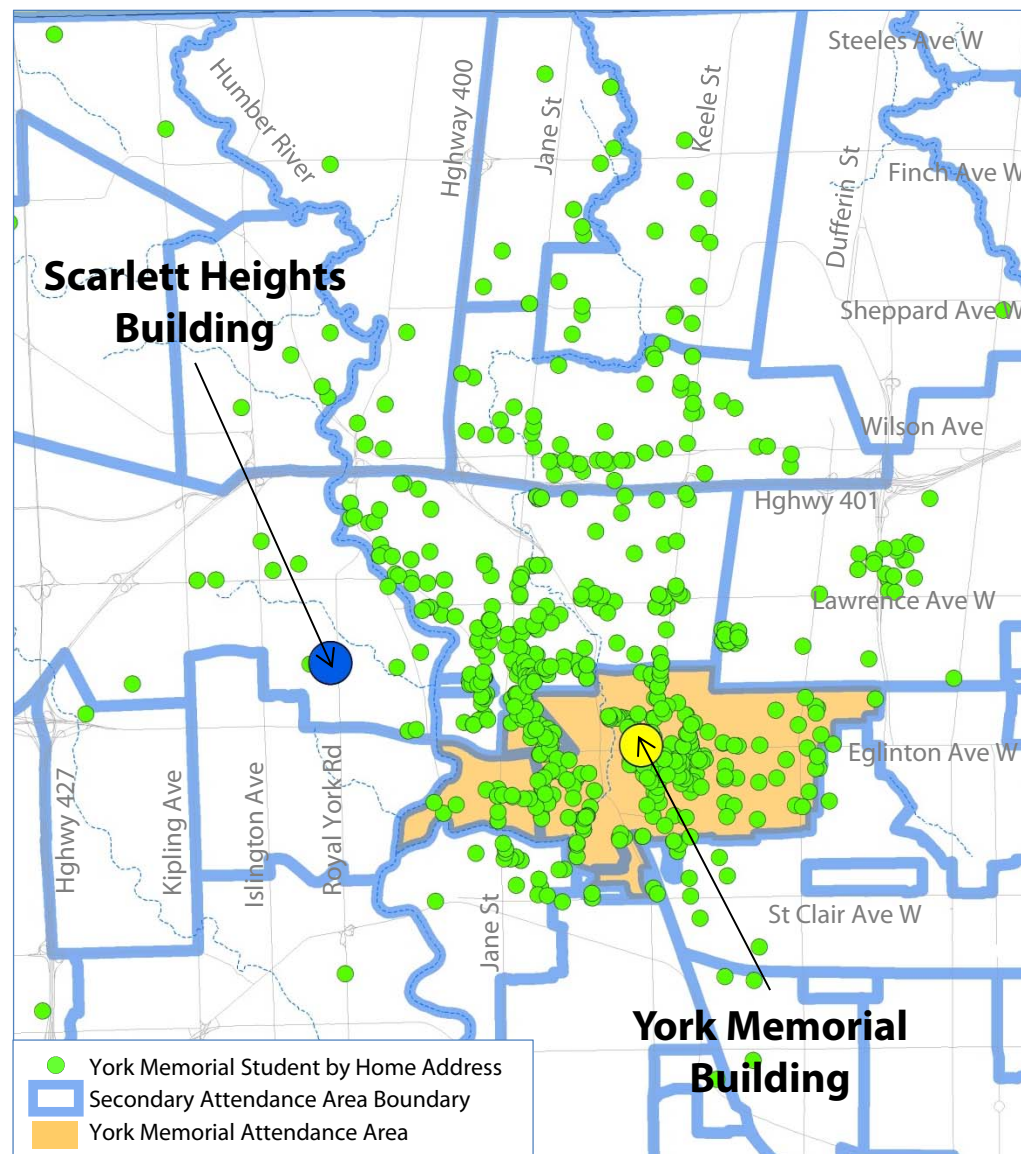
## Option 2

- Accommodate York Memorial CI in the Scarlett Heights building (George Harvey CI remains in its building)



## Location

- 15 Trehorne Drive – 5.3 kms west of York Memorial building
- Located outside of the York Memorial attendance area in the Kipling attendance area
- Only the western portion of the York Memorial attendance area is within 4.8 kms distance of Scarlett Heights – 522 York Memorial students live more than 4.8 kms from Scarlett Heights (59% of total students)
- Average distance of York Memorial students to Scarlett Heights is 5.5 kms



# Building

- Built 1964
- 18.6 acres shared with Hilltop MS
- 124,087 square feet
- 2 storeys
- 44 instructional spaces
- Capacity of 840 pupil places
- 109 parking spots
- Not accessible:
  - 2 student washrooms have an accessible stall
  - no entrances with power-operated doors – main entrance is inaccessible – entrances #6 and #7 are level but are at the back of the building
  - no elevator so 2<sup>nd</sup> floor is inaccessible but all specialized rooms are on 1<sup>st</sup> floor



## Instructional Spaces in the Building

Instructional Spaces	Count
Classroom	30
Science lab	5
Music/drama room	3
Art room	1
Gym	2
Weight room	1
Library	1
Auditorium	1
Total	44

No pool



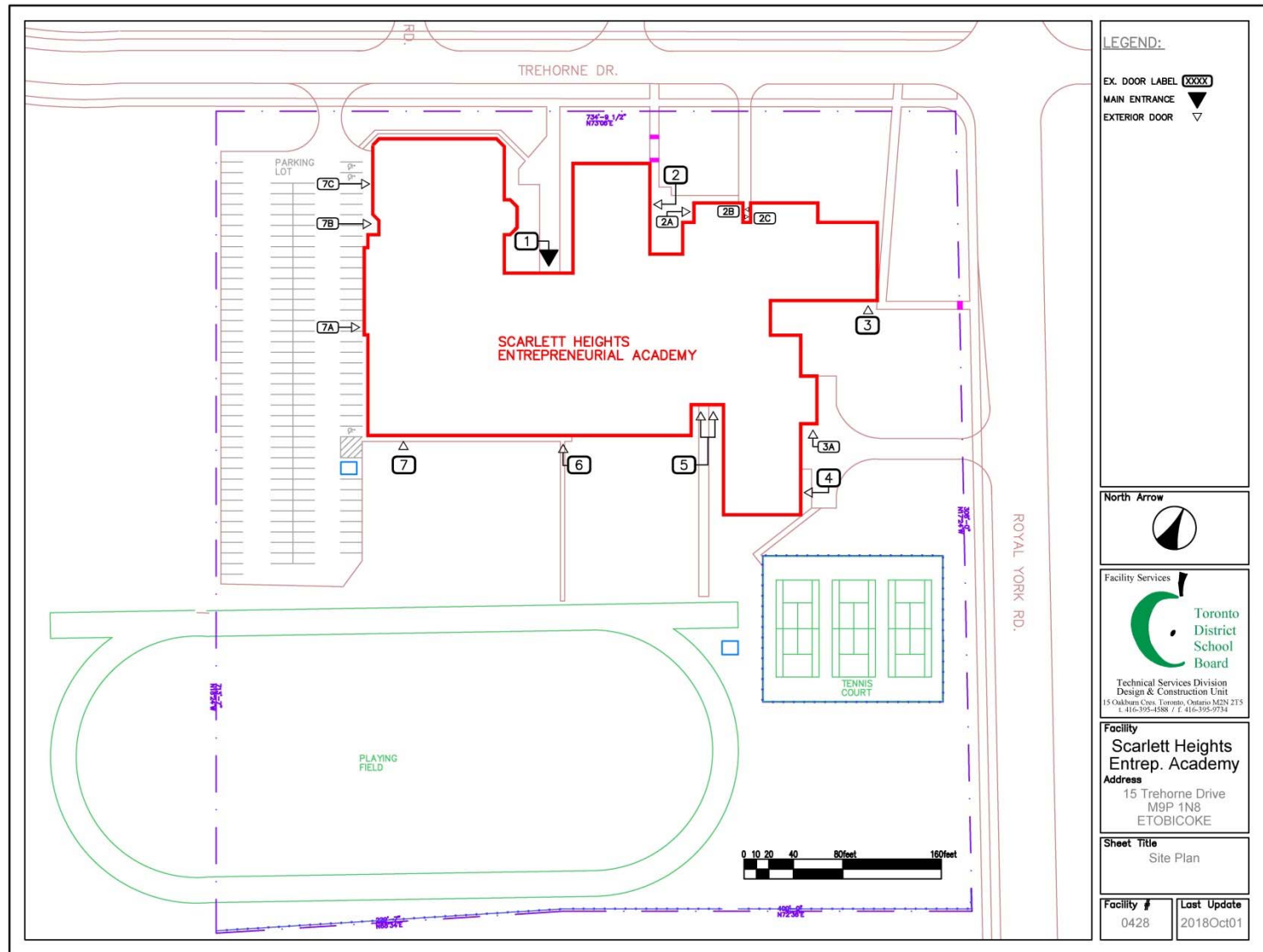
# Enrolment and Instructional Spaces Required

## York Memorial CI

Projected enrolment (September 2019)	894
Estimated minimum instructional spaces required (based on teaching staff allocation and assuming every room is used for 4 periods a day: 52 teachers x 3 periods taught per day / 4 periods per room)	39
Building capacity (Ministry formula based on 21 pupils per classroom)	840
Utilization rate (projected enrolment / building capacity)	106%

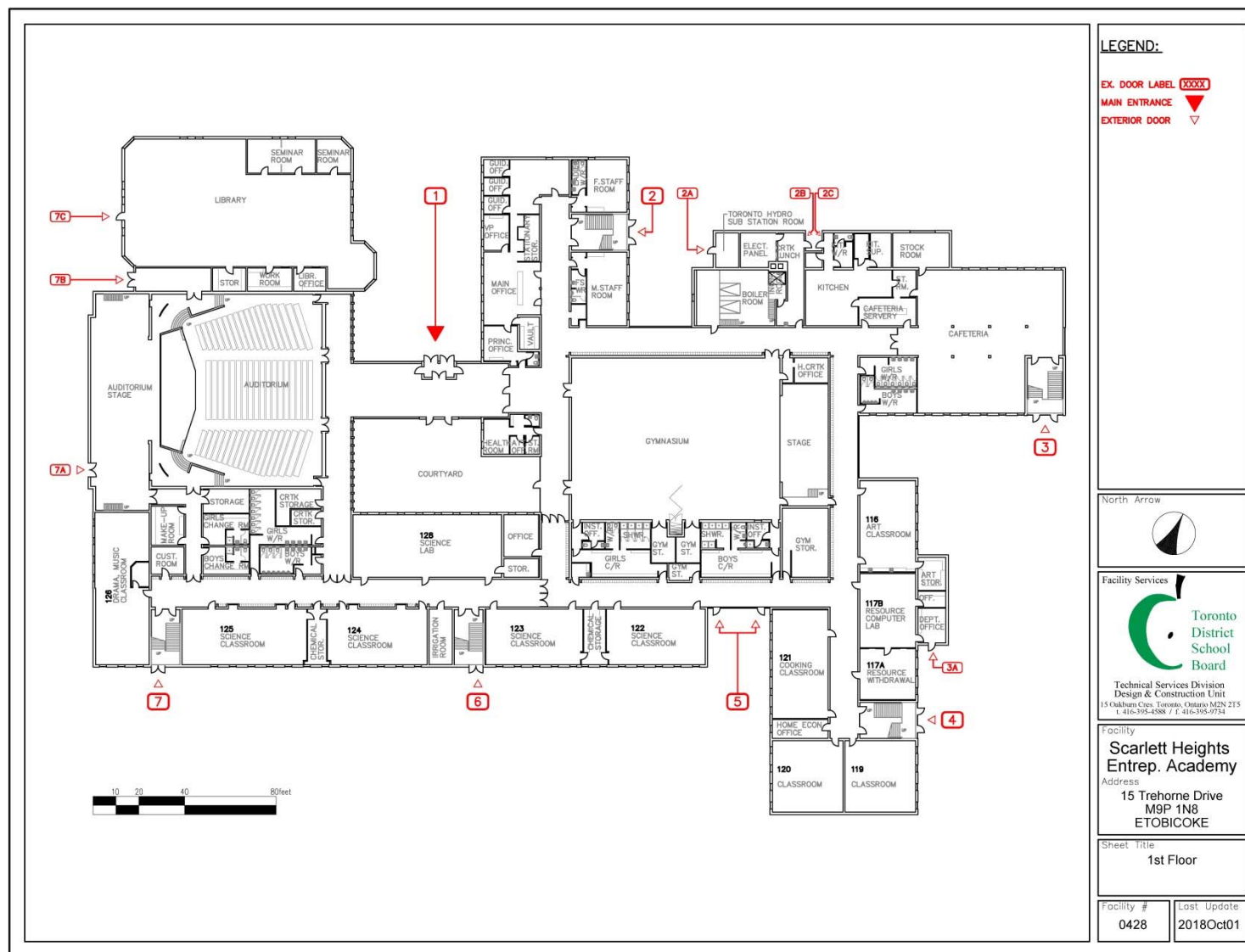
## Option 2

# Scarlett Heights Site Plan



## Option 2

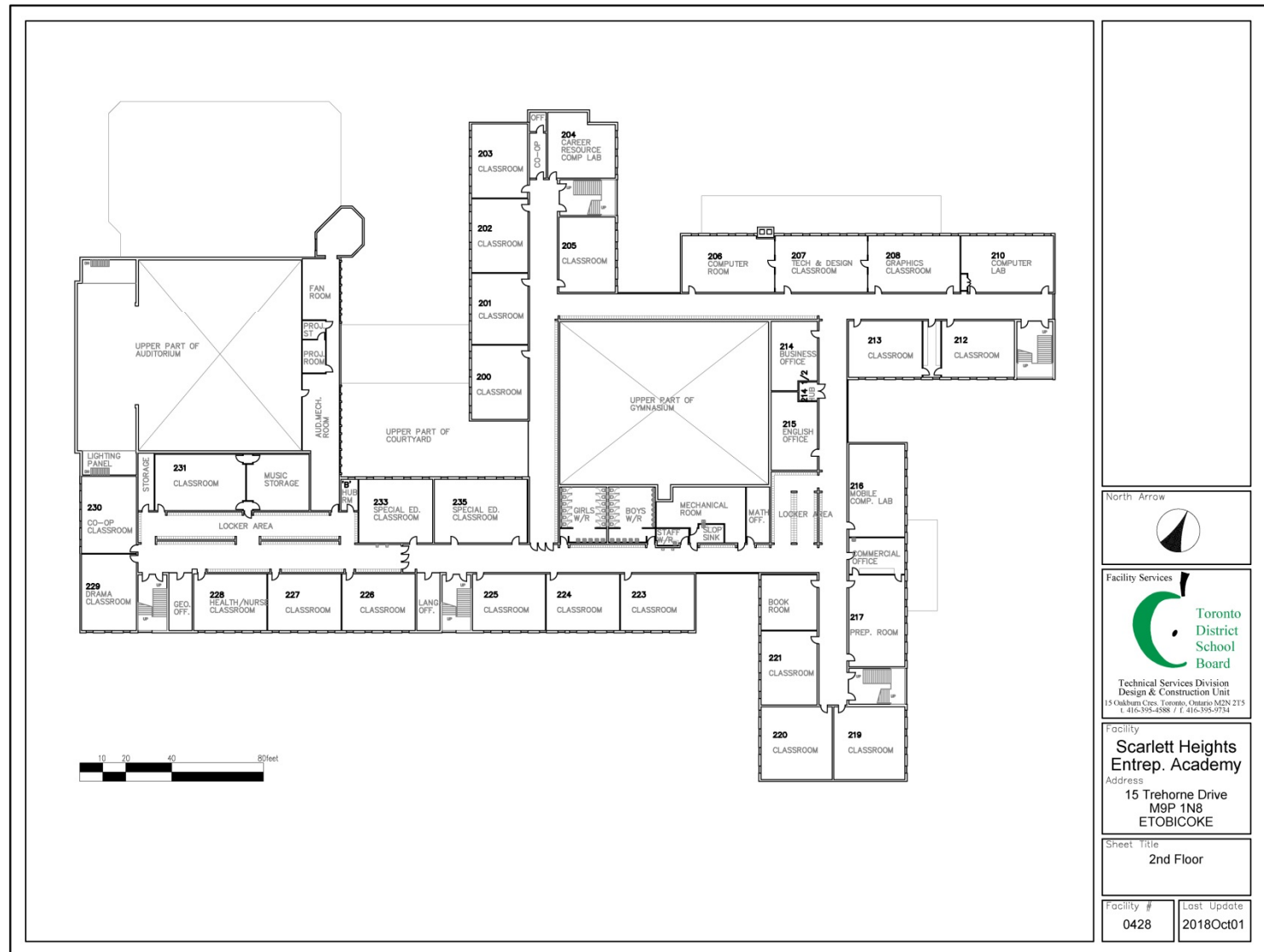
# Scarlett Heights 1<sup>st</sup> Floor





## Option 2

# Scarlett Heights 2<sup>nd</sup> Floor



# Advantages and Disadvantages

Advantages	Disadvantages
Provides sufficient classrooms and specialized spaces (e.g. science labs) for York Memorial and George Harvey	Scarlett Heights is not located within the York Memorial attendance area – 522 York Memorial students live beyond 4.8 kms and will require transportation
Provides sufficient sports fields for York Memorial and George Harvey – no need for a school to travel a distance to get to a sports field	Because of the distance from the York Memorial area, it will be challenging for York Memorial students to pick up younger siblings from elementary schools
York Memorial and George Harvey can maintain their own identities in their own exclusive space	Scarlett Heights is currently empty – will require furniture, equipment and maintenance to make Scarlett Heights appropriate for school use
Adult program (Essential Skills Upgrading) can return to the George Harvey building	Scarlett Heights building does not have a pool
Skylark Youth Services program can regain their two classrooms	George Harvey will be an under-utilized building



# Appendix

# Count of York Memorial CI Students by Attendance Area of their Home Addresses

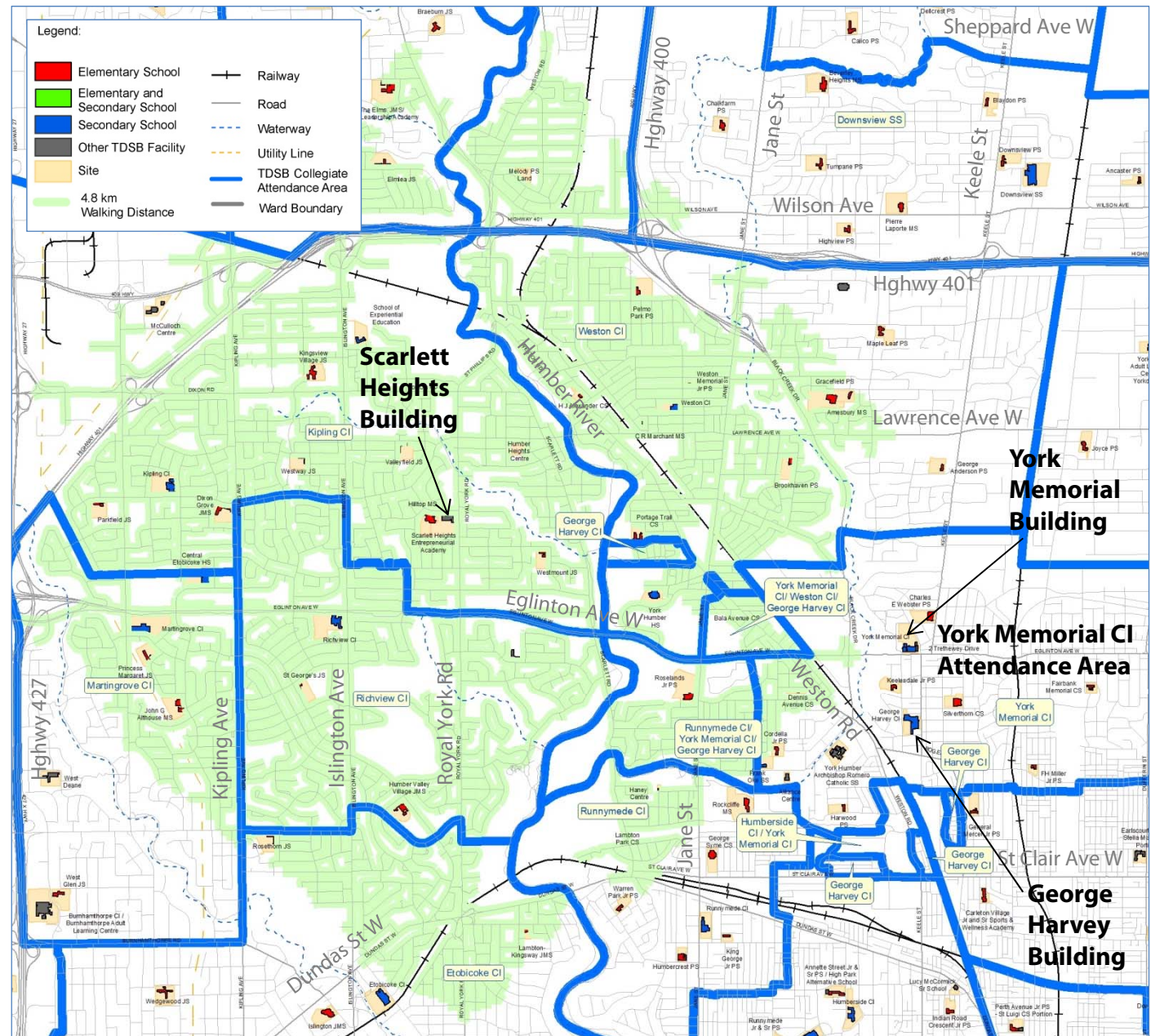
361 students of 886 (or 41%) live in the York Memorial attendance areas (including the “shared” attendance areas where students have the choice of several home schools). In-area students are highlighted in yellow.

Source: October 2018 student dataset from Trillium Student Information System

Program	Attendance Area of Home Address	Grade				Total
		9	10	11	12	
Regular	York Memorial CI	91	60	74	80	305
	Weston CI	89	57	65	76	287
	John Polanyi CI	19	10	20	8	57
	Downsview SS	13	22	13	9	57
	York Memorial CI/ Weston CI/ George Harvey CI	7	12	8	6	33
	Runnymede CI	4	2	6	12	24
	Runnymede CI/ York Memorial CI/ George Harvey CI	7	2	5	4	18
	C W Jefferys CI	2	7	3	2	14
	Westview Centennial SS	2	4	1	6	13
	Kipling CI	5	3		4	12
	Oakwood CI	2	3	2	3	10
	George Harvey CI	1	3	3	2	9
	Thistletown CI	1	1	1	3	6
	Emery CI	2	2		2	6
	Humberside CI / York Memorial CI		2		1	3
	Bloor CI			2	1	3
	North Albion CI			1	2	3
	West Humber CI			1	1	2
	Silverthorn CI		1			1
	Parkdale CI/ Bloor CI				1	1
	Etobicoke CI		1			1
	Martingrove CI			1		1
	Out of Toronto			1		1
	Humberside CI			1		1
	Sir Wilfrid Laurier CI			1		1
	Regular Program Total	245	192	209	223	869
Developmental Disability	Weston CI	1			6	7
	John Polanyi CI	1			2	3
	York Memorial CI				2	2
	William L Mackenzie CI				1	1
	Kipling CI				1	1
	Lakeshore CI				1	1
	Runnymede CI				1	1
	North Toronto CI			1		1
	Developmental Disability Program Total	2		1	14	17
School Total		247	192	210	237	886

# Map Showing 4.8 kms from Scarlett Heights Building

All the streets shaded green are within 4.8 kms of Scarlett Heights.



## Example Timetables for York Memorial CI and George Harvey CI with Separate Lunch Periods

**York Memorial CI**

period	start	end	minutes
announcements	8:45	8:48	3
1	8:48	10:05	77
travel	10:05	10:08	3
2	10:08	11:25	77
travel	11:25	11:28	3
3	11:28	12:45	77
travel	12:45	12:48	3
lunch	12:48	2:05	77
travel	2:05	2:08	3
4	2:08	3:25	77

**George Harvey CI**

period	start	end	minutes
announcements	8:45	8:48	3
1	8:48	10:05	77
travel	10:05	10:08	3
2	10:08	11:25	77
travel	11:25	11:28	3
lunch	11:28	12:45	77
travel	12:45	12:48	3
3	12:48	2:05	77
travel	2:05	2:08	3
4	2:08	3:25	77

**Example school with 2 lunch periods:  
Earl Haig SS**

period	start	end	minutes
announcements	8:50	8:53	3
1	8:53	10:10	77
travel	10:10	10:13	3
2	10:13	11:30	77
travel	11:30	11:33	3
3 / lunch 1	11:33	12:50	77
travel	12:50	12:53	3
3 / lunch 2	12:53	2:10	77
travel	2:10	2:13	3
4	2:13	3:30	77



# Current Timetables for York Memorial CI and George Harvey CI

**York Memorial CI**

period	start	end	minutes
announcements	8:45	8:50	5
1	8:50	10:08	78
travel	10:08	10:12	4
2	10:12	11:30	78
travel	11:30	11:34	4
lunch	11:34	12:26	52
travel	12:26	12:30	4
3	12:30	1:48	78
travel	1:48	1:52	4
4	1:52	3:10	78

**George Harvey CI**

period	start	end	minutes
announcements	8:45	8:50	5
1	8:50	10:08	78
travel	10:08	10:12	4
2	10:12	11:30	78
travel	11:30	11:34	4
lunch	11:34	12:26	52
travel	12:26	12:30	4
3	12:30	1:48	78
travel	1:48	1:52	4
4	1:52	3:10	78

